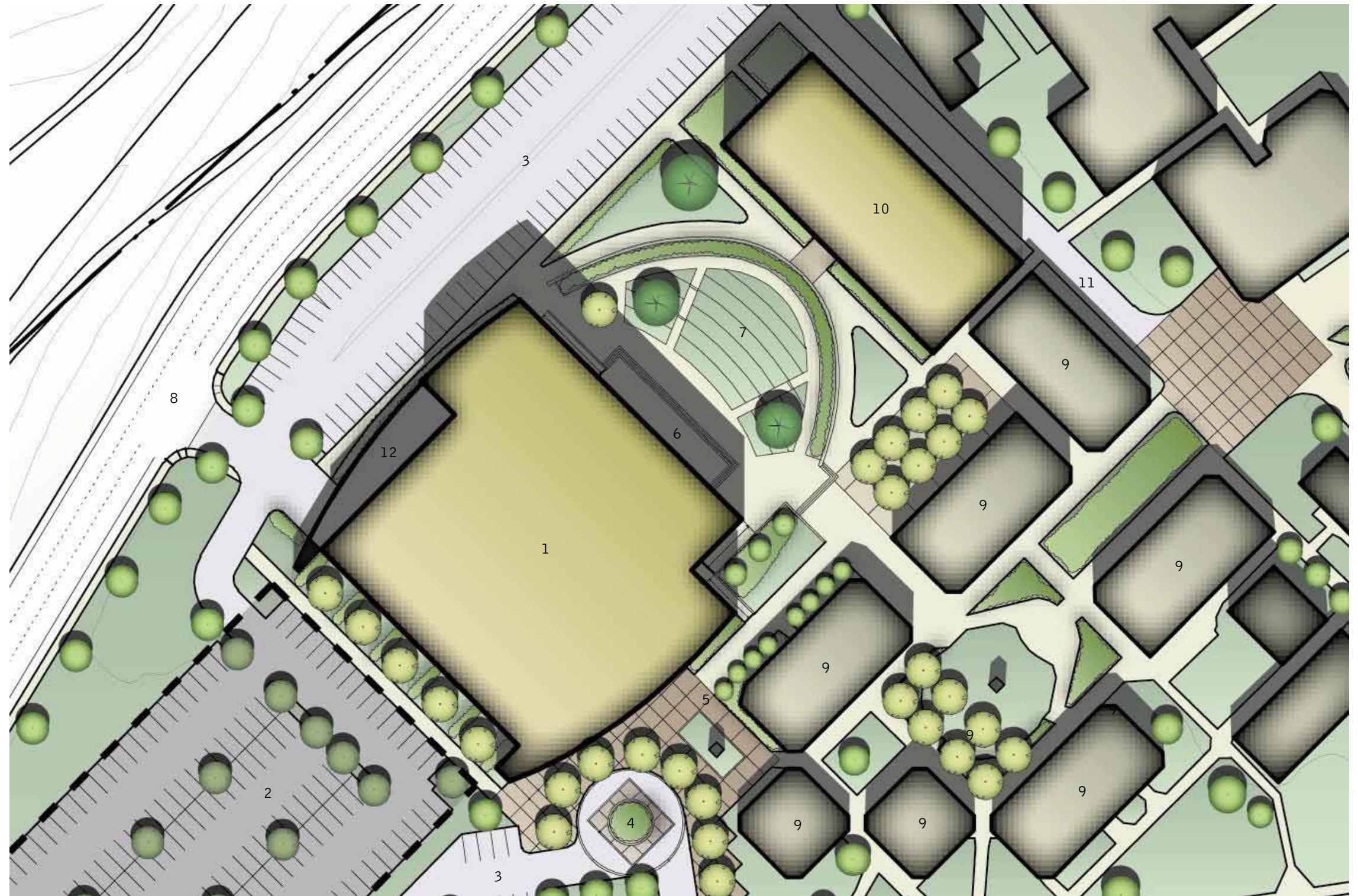


1. Center for the Arts Building
2. New Parking Lot  
(Potential Future Parking Structure)
3. Existing Parking Lot Re-Configured
4. Drop Off Area
5. Pre-Function Forecourt
6. Exterior Stage
7. Amphitheater
8. Existing Loop Road
9. Existing Buildings to Remain
10. Classroom/ Lecture Hall
11. Fire Access Lane
12. Service / Loading



#### College Center for the Arts Building

This much needed building addresses the growing community demand for courses in Music, Dance, and Speech. It will provide classroom and workspace for Theater and Drama, as well as a technical Theater Program and will have specialized Forensic and Music labs (including a Midi lab for computer music). The plans for the building include a theater for stage productions and associated college activities. This theater will be the campus's first large assembly area, and will be a valuable asset to the College and the community.

1. Science Technology Building Addition
2. Existing Loop Road
3. Existing Parking Lot
4. Existing Buildings to Remain
5. Information Technology Services Building
6. Social Spaces
7. New Parking Lot
8. Service



**Science Technology Phase II Classrooms / Labs**  
The expansion of the Science Technology Center will provide needed space to support growth in the Chemistry, Biology, Engineering, Physics, Astronomy, and Earth Sciences programs. It will also house high-tech facilities for emerging and popular programs such as Laser Technology and Viticulture. The Center will have specialized laboratories, independent study areas, project development space, classrooms, and offices.

## Science Technology Classroom & Labs, Phase II

Exhibit A-12

1. Maintenance and Operations Building/ Yard
2. Service Drive
3. Tennis Courts
4. Field House
5. Collegiate Level Baseball Field
6. Track and Field Stadium with Soccer Field
7. Softball Field
8. Pedestrian Crossing
9. Open Play Field for Physical Education
10. Tree Drifts at Slope
11. Soccer Fields
12. Aquatics Center
13. Physical Education Complex
14. Existing Loop Road
15. Proposed New Parking Lot (Potential Future Parking Structure)
16. Relocated Campus Building (1700)
17. Future Potential Connector Road
18. "The Promenade"

**Physical Education, Phase II**

This project allows for the construction of outdoor PE areas to augment and support the College's educational and athletic programs. Once this project is completed, the College will be able to offer programs in Biomechanics, Physical Fitness, and Wellness as well as integrated programs in Health Services and Physical Education. Currently, the PE department has very limited outdoor facilities: one soccer field and a few asphalt basketball courts. This project includes a swimming pool, grass playing fields, tennis courts, and outdoor running track, student and guest restrooms, a field house, and basketball/volleyball courts. Plans include safety lighting.



1. Student Services Building
2. Central Administrative Services Building
3. Multi-Disciplinary Building
4. Existing Buildings to Remain
5. The Café/ Social Space
6. Sustainability Demonstration Garden
7. "Little Springs" sustainable water feature
8. Accent Paving
9. "Rain Gardens" / Infiltration Basins
10. Drop Off Area
11. Photo Voltaic Panels/ Shade Structures at Parking
12. Fire Access Lane/ Service Road
13. Service
14. Permeable Paving at Parking Stalls
15. Bus Stop

**Student Services, Counseling, Financial Aid, Admissions**

This building will allow the College to centralize all student service functions including (but not limited to) counseling, admissions and records, financial aid, the career/ transfer center, articulation, DSPS, EOPS, services for seniors, the health center, the cafeteria, and the student government offices.

**Central Services**

This building will house the personnel required to support campus growth and operations, including institutional research, grant writing, public relations, business/ finance services, academic administration, the president's office and the LPC Foundation.



**Student Services & Central Administrative Services**

**Exhibit A-14**