



CHABOT – LAS POSITAS COMMUNITY COLLEGE DISTRICT

Facilities Planning and Management Department

January 18, 2008

Addendum No. 2 **INVITATION FOR BID NO.: 08-16** **M&O Facility Modular Office Building Manufacturing & Installation, Las Positas College**

All Prospective Bidders:

This Addendum modifies the original Bid Documents for the above Bid. Acknowledge receipt of this addendum in the space provided on the BID PROPOSAL FORM. Failure to do so may subject Bidder to disqualification.

The original Bid Documents are modified by the revision as follows:

CHANGES TO THE INVITATION FOR BID

Item 1 Attachment C Specifications

- A. Modify Specifications to match revised Specifications shown on attached sheet A3.01.

CHANGES TO THE DRAWINGS

Architectural Drawings

Item 2 Sheet A3.01 Office – Floor Plan (re-issued)

- A. Specifications:
 - 1. Add subparagraph 8.f to indicate a folding accessible dressing seat and grab bar at accessible locker location.
 - 2. Add subparagraph 9.d to indicate a multiple HVAC unit, multi-zoned mechanical system.
 - 3. Add paragraph 20 to indicate a mop sink in Custodial Room 112.
 - 4. Add paragraph 21 to indicate location of water heater in Custodial Room 112.
 - 5. Add paragraph 22 to indicate location of fire riser in Custodial Room 112.
 - 6. Add paragraph 23 to indicate a cold water valve in Breakroom 120 for future refrigerator.

7. Add paragraph 24 to indicate that all equipment and casework, including shelving, is to be earthquake braced.
 8. Add paragraph 25 to indicate that recessed fire extinguisher cabinets are required.
- B. Floor Plan
1. Add mop sink in Custodial Room 112.
 2. Add fire riser location in Custodial Room 112.
 3. Add water heater in Custodial Room 112.
 4. Add cold water valve in Breakroom 120 for future refrigerator provided by Owner.

Item 3 Sheet A10.01 Window and Door Types, Schedules (re-issued)

- A. Window Types
1. Modify window types 1, 2 and 4 to be sliding sash type.
- B. Window Schedule
1. Add note specifying glazing type.

Item 4 Sheet A10.02 Finish Schedule (re-issued)

- A. Legend:
1. SL1 Forbo Marmoleum to have welded seams.
 2. C1 C&A Powerbond VCCT carpet to be “Sonar” pattern.
 3. B1 Forbo Marmoleum coved base to have welded seams.
 4. TWB vinyl covering to be manufacturer’s standard with Class 1 flame spread rating.
- B. Add “Notes” section:
1. Add note 1 indicating that all exposed surfaces are to be painted.
 2. Add note 2 indicating that sound insulation is to be installed at all interior walls.

If you have any questions regarding this Addendum No.1, please contact the Office of the Facilities Planning & Management in **writing, via facsimile or email**. All other terms and conditions of BID No. 08-16 to remain the same.

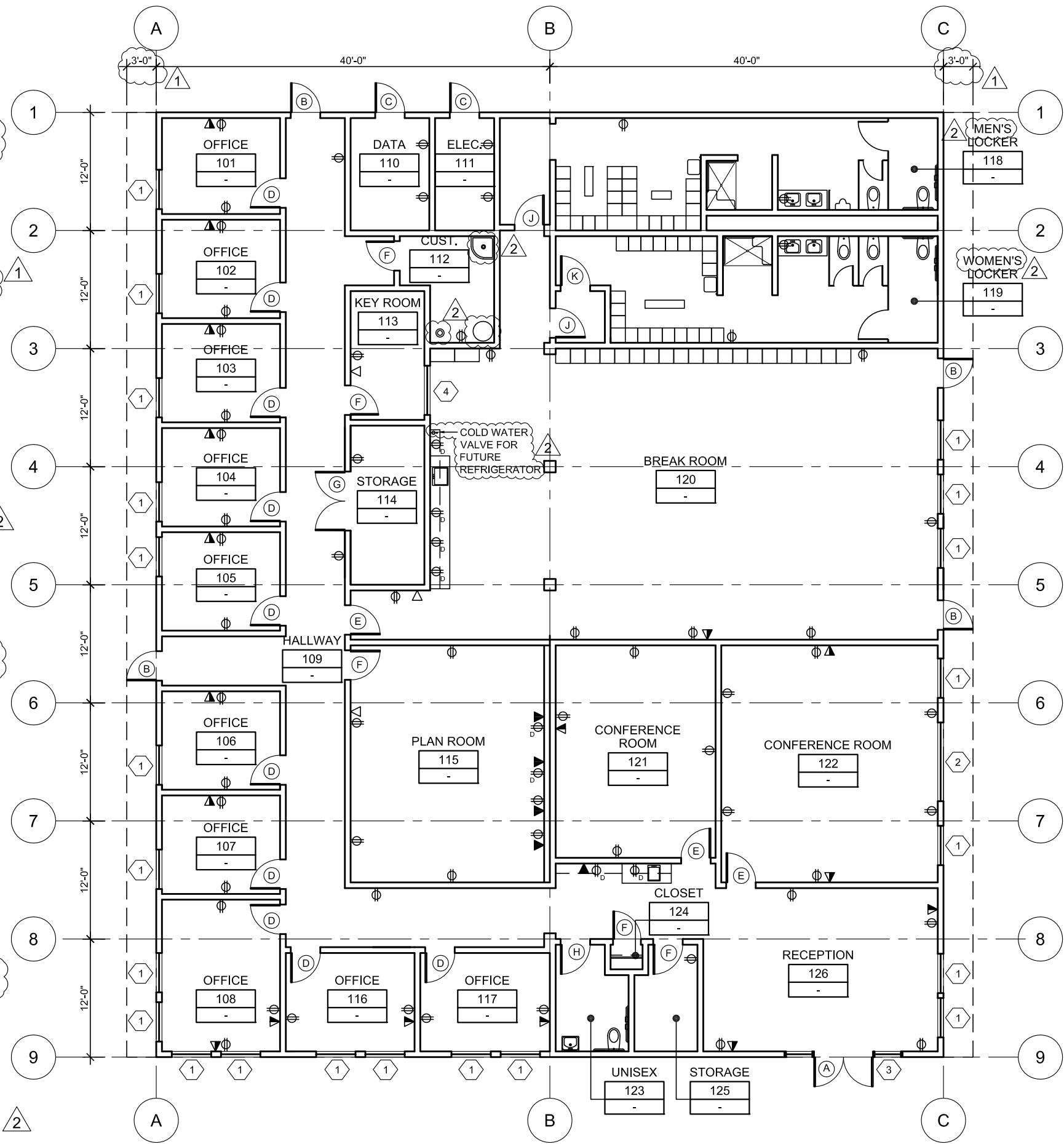
Sincerely,

C: Bid File

SPECIFICATIONS:

MODULAR OFFICE BUILDING CONFORMING TO THE FOLLOWING CRITERIA:

1. CONFORM TO 2007 TITLE 24 CALIFORNIA BUILDING CODE
2. RIGID STEELFRAME BUILDING
3. MIN. 1/4:12 GABLED ROOF W/ CLASS A STANDING SEAM ROOFING
4. THREE-COAT EXTERIOR CEMENT PLASTER FINISH
 - a. PROVIDE ALTERNATE PRICING FOR MEDIUM DENSITY OVERLAY PLYWOOD SIDING W/ SHIP LAP EDGING AND GROOVING AT 4" MAX. CENTERS
5. FLUSH ENTRY STEEL FLOOR FRAMING W/ CONCRETE FOUNDATIONS
 - a. MINIMUM 18" HIGH CRAWL SPACE THROUGHOUT
 - b. CRAWL SPACE TO BE 18" HIGH TO UNDERSIDE OF FLOOR FRAMING IN AREAS WHERE PLUMBING FIXTURES ARE LOCATED
 - c. UNDERFLOOR VENTILATION
 - d. LEVEL PAD WILL BE PREPARED BY DISTRICT'S SITE CONTRACTOR PRIOR TO MODULAR MFR'S ARRIVAL AT SITE TO INSTALL FOUNDATIONS
6. 2007 TITLE 24 ENERGY CODE COMPLIANT
7. MINIMUM 8' HIGH SUSPENDED ACOUSTICAL TILE CEILINGS
8. RESTROOMS AS SHOWN ON FLOOR PLAN
 - a. SOLID PHENOLIC TOILET PARTITIONS
 - b. MIRRORS, GRAB BARS, SANITARY NAPKIN DISPENSER, SANITARY NAPKIN DISPOSAL, SHOWER SEAT AND DRESSING SEAT (ALL OTHER TOILET ACCESSORIES ARE OWNER-FURNISHED)
 - c. 15"Wx18"Dx72"H SINGLE-TIER VENTILATED METAL LOCKERS WITH FACTORY APPLIED ENAMEL FINISH AS SHOWN ON FLOOR PLAN
 - d. PLUMBING FIXTURES AS SHOWN ON FLOOR PLAN
 - e. ALL PLUMBING FIXTURES TO RECEIVE HOT AND COLD WATER
 - f. FOLDING ACCESSIBLE DRESSING SEAT AND GRAB BAR AT ACCESSIBLE LOCKER LOCATION
9. ROOF-MOUNTED, GAS-FIRED MECHANICAL EQUIPMENT
 - a. DUCTED SUPPLY AND RETURN AIR
 - b. PROGRAMMABLE THERMOSTATS
 - c. DEDICATED SPLIT SYSTEM CASSETTE UNIT IN DATA ROOM 110
 - d. MULTIPLE HVAC UNITS ZONED ACCORDING TO ROOM USAGE, EXPOSURE AND AREA IN ORDER TO MAXIMIZE EFFICIENCY AND COMFORT
10. ELECTRICAL PANELS LOCATED IN ELECTRICAL ROOM 111
11. 110V DUPLEX RECEPTACLES AT LOCATIONS SHOWN ON FLOOR PLAN
12. T-8 LIGHT FIXTURES W/ ELECTRONIC BALLASTS AND HOLOPHONE 8224 DIFFUSERS
 - a. OCCUPANCY SENSORS
13. BACKBOX W/ MIN. 1/2" Ø CONDUIT STUBBED TO 6" ABOVE ACCESSIBLE CEILING AT PHONE/DATA LOCATIONS SHOWN ON FLOOR PLAN
14. BACKBOXES W/ CONDUIT TO 6" ABOVE ACCESSIBLE CEILING FOR OWNER-FURNISHED FIRE ALARM SYSTEM
15. ILLUMINATED EMERGENCY EXIT SIGNS AT EXTERIOR DOORS
16. EXTERIOR LIGHTING AT DOOR ENTRIES
17. SHIPPING AND CRANE INSTALLATION
18. COORDINATE ACCESS TO SITE WITH DISTRICT'S SITEWORK CONTRACTOR
19. PRE-DRILLED OPENINGS IN STEEL ROOF FRAMING FOR FIRE SPRINKLERS TO BE INSTALLED BY DISTRICT'S SITEWORK CONTRACTOR
20. MOP SINK IN CUSTODIAL ROOM 112 WITH HOT AND COLD WATER
21. HOT WATER HEATER IN CUSTODIAL ROOM 112
22. 6" FIRE RISER FOR FIRE SPRINKLERS LOCATED IN CUSTODIAL ROOM 112 (BY DISTRICT'S SITE CONTRACTOR)
23. COLD WATER VALVE IN BREAKROOM 120 FOR FUTURE OWNER-FURNISHED REFRIGERATOR
24. ALL EQUIPMENT AND CASEWORK, INCLUDING SHELVES, TO BE EARTHQUAKE BRACED
25. RECESSED FIRE EXTINGUISHER CABINETS



BILL GOULD DESIGN
ART & ARCHITECTURE

•
394-A Umbarger Rd.
San Jose, CA 95111
Fax 408.224.9891
Phone 408.224.9890

ARCHITECT SEAL

CONSULTANT SEAL

- 1 ADDENDUM #1
1/9/08
- 2 ADDENDUM #2
1/17/08

PROJECT TITLE

LAS POSITAS COLLEGE
M&O FACILITY
MODULAR OFFICE
BUILDING -
MANUF. & INSTALLATION

3033 COLLIERS CANYON RD.
LIVERMORE, CA 94551

CHABOT-LAS POSITAS
COMMUNITY COLLEGE DISTRICT

DRAWING TITLE

OFFICE - FLOOR PLAN

PROJECT NO.

71066

DATE

12.17.07

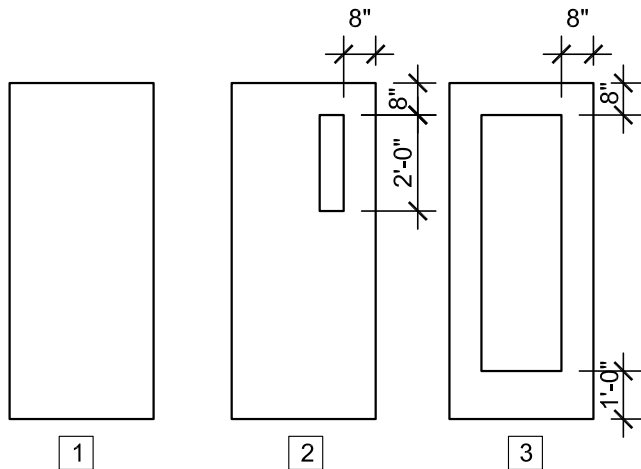
SCALE

3/32"=1'-0"

REFERENCE SHEET NO.

SHEET NO.

A3.01

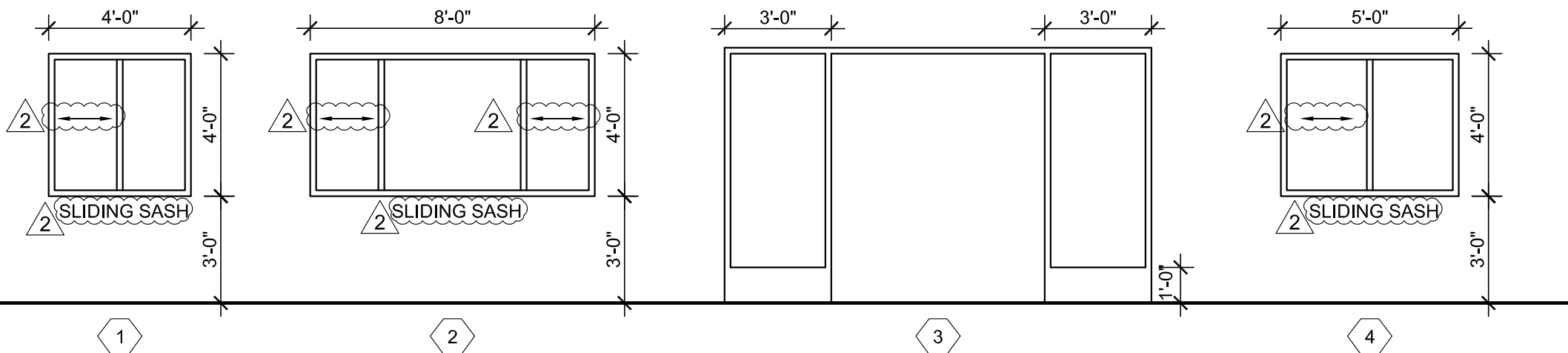


DOOR TYPES

DOOR TYPE	DESCRIPTION	DOOR				FRAME		FIRE RATING (MIN)	PANIC HARDWARE?	HARDWARE GROUP	REMARKS
		DOOR SIZE	DOOR TYPE	CONSTRUCTION	FINISH	CONSTRUCTION	FINISH				
A	EXTERIOR ENTRY	6'x7'	3	STL	P	STL	P	-	Y	1	-
B	EXTERIOR ENTRY	3'x7'	2	STL	P	STL	P	-	Y	2	-
C	EXTERIOR ELECTRICAL	3'x7'	1	STL	P	STL	P	-	N	3	-
D	OFFICE	3'x7'	2	STL	FF	STL	P	-	N	4	-
E	CONFERENCE ROOM	3'x7'	3	STL	FF	STL	P	-	N	5	-
F	INTERIOR STORAGE	3'x7'	1	STL	FF	STL	P	-	N	6	-
G	INTERIOR STORAGE	6'x7'	1	STL	FF	STL	P	-	N	7	-
H	INTERIOR RESTROOM	3'x7'	1	STL	P	STL	P	-	N	8	-
J	LOCKER ROOM	3'x7'	1	STL	P	STL	P	-	N	9	-
K	PASSAGE	3'x7'	1	STL	P	STL	P	-	N	10	-

LEGEND

P = PAINT
 STL= STEEL
 FF= FACTORY FINISHED



WINDOW TYPES

WINDOW TYPE	DESCRIPTION	WINDOW SIZE	CONSTRUCTION	FINISH	REMARKS
1	EXTERIOR WINDOW	4'x4'	AL	FF	BLINDS
2	EXTERIOR WINDOW	8'x4'	AL	FF	BLINDS
3	EXTERIOR WINDOW	12'x7'-2"	STL	P	BLINDS
4	INTERIOR WINDOW	5'x4'	STL	P	BLINDS

LEGEND

STL= STEEL
 AL= ALUMINUM
 FF= FACTORY FINISHED
 P = PAINT

NOTES:

1. PROVIDE 7/32" MIN. TEMPERED GLASS - SOLAR GRAY, GLARE REDUCING, LIGHT TRANSMISSION FACTOR 12% TO 16%.

BILL GOULD DESIGN
 ART & ARCHITECTURE

394-A Umbarger Rd.
 San Jose, CA 95111
 Fax 408.224.9891
 Phone 408.224.9890

ARCHITECT SEAL

CONSULTANT SEAL

- 1 ADDENDUM #1
1/9/08
- 2 ADDENDUM #2
1/17/08

PROJECT TITLE

**LAS POSITAS COLLEGE
 M&O FACILITY
 MODULAR OFFICE
 BUILDING -
 MANUF. & INSTALLATION**

3033 COLLIER'S CANYON RD.
 LIVERMORE, CA 94551

CHABOT-LAS POSITAS
 COMMUNITY COLLEGE DISTRICT

DRAWING TITLE

**WINDOW AND DOOR
 TYPES, SCHEDULES**

PROJECT NO.

71066

DATE

12.17.07

SCALE

1/4"=1'-0"

REFERENCE SHEET NO.

SHEET NO.

A10.01

ARCHITECT SEAL

CONSULTANT SEAL

- 1 ADDENDUM #1
1/9/08
- 2 ADDENDUM #2
1/17/08

PROJECT TITLE

**LAS POSITAS COLLEGE
M&O FACILITY
MODULAR OFFICE
BUILDING -
MANUF. & INSTALLATION**

3033 COLLIERS CANYON RD.
LIVERMORE, CA 94551
CHABOT-LAS POSITAS
COMMUNITY COLLEGE DISTRICT

DRAWING TITLE

FINISH SCHEDULE

PROJECT NO.

71066

DATE

12.17.07

SCALE

NO SCALE

REFERENCE SHEET NO.

SHEET NO.

A10.02

ROOM NUMBER	ROOM NAME	FLOOR	BASE	WALLS								CEILING		REMARKS
				NORTH		EAST		SOUTH		WEST		MATERIAL	FINISH	
				MATERIAL	FINISH	MATERIAL	FINISH	MATERIAL	FINISH	MATERIAL	FINISH			
101	OFFICE	C1	B1	TWB	FF	TWB	FF	TWB	FF	TWB	FF	ACT	FF	-
102	OFFICE	C1	B1	TWB	FF	TWB	FF	TWB	FF	TWB	FF	ACT	FF	-
103	OFFICE	C1	B1	TWB	FF	TWB	FF	TWB	FF	TWB	FF	ACT	FF	-
104	OFFICE	C1	B1	TWB	FF	TWB	FF	TWB	FF	TWB	FF	ACT	FF	
105	OFFICE	C1	B1	TWB	FF	TWB	FF	TWB	FF	TWB	FF	ACT	FF	
106	OFFICE	C1	B1	TWB	FF	TWB	FF	TWB	FF	TWB	FF	ACT	FF	
107	OFFICE	C1	B1	TWB	FF	TWB	FF	TWB	FF	TWB	FF	ACT	FF	
108	OFFICE	C1	B1	TWB	FF	TWB	FF	TWB	FF	TWB	FF	ACT	FF	
109	HALLWAY	SL1	B1	TWB	FF	TWB	FF	TWB	FF	TWB	FF	ACT	FF	
110	DATA	SL1	B1	FRP	FF	FRP	FF	FRP	FF	FRP	FF	ACT	FF	
111	ELECTRICAL	SL1	B1	FRP	FF	FRP	FF	FRP	FF	FRP	FF	ACT	FF	
112	CUSTODIAL	SL1	B2	FRP	FF	FRP	FF	FRP	FF	FRP	FF	ACT	FF	
113	KEY ROOM	SL1	B1	TWB	FF	TWB	FF	TWB	FF	TWB	FF	ACT	FF	
114	STORAGE	SL1	B1	FRP	FF	FRP	FF	FRP	FF	FRP	FF	ACT	FF	
115	PLAN ROOM	SL1	B1	TWB	FF	TWB	FF	TWB	FF	TWB	FF	ACT	FF	
116	OFFICE	C1	B1	TWB	FF	TWB	FF	TWB	FF	TWB	FF	ACT	FF	
117	OFFICE	C1	B1	TWB	FF	TWB	FF	TWB	FF	TWB	FF	ACT	FF	
118	WOMEN'S LOCKER ROOM	SL1	B2	FRP	FF	FRP	FF	FRP	FF	FRP	FF	ACT	FF	
119	MEN'S LOCKER ROOM	SL1	B2	FRP	FF	FRP	FF	FRP	FF	FRP	FF	ACT	FF	
120	BREAK ROOM	SL1	B1	TWB	FF	TWB	FF	TWB	FF	TWB	FF	ACT	FF	
121	CONFERENCE ROOM	C1	B1	TWB	FF	TWB	FF	TWB	FF	TWB	FF	ACT	FF	
122	CONFERENCE ROOM	C1	B1	TWB	FF	TWB	FF	TWB	FF	TWB	FF	ACT	FF	
123	UNISEX RESTROOM	SL1	B2	FRP	FF	FRP	FF	FRP	FF	FRP	FF	ACT	FF	
124	CLOSET	SL1	B1	TWB	FF	TWB	FF	TWB	FF	TWB	FF	ACT	FF	
125	STORAGE	SL1	B1	TWB	FF	TWB	FF	TWB	FF	TWB	FF	ACT	FF	
126	RECEPTION	SL1	B1	TWB	FF	TWB	FF	TWB	FF	TWB	FF	ACT	FF	

LEGEND

- SL1= SHEET LINOLEUM - FORBO MARMOLEUM WITH WELDED SEAMS 2
- C1= CARPET - C&A "POWERBOND" VINYL CUSHIONED TUFTED TEXTILE (VCTT) - PATTERN: SONAR 2
- B1= RUBBER TOP SET BASE - BURKE INDUSTRIES
- B2= COVED BASE - FORBO MARMOLEUM WITH WELDED SEAMS 2
- 2 TWB= (MANUFACTURER'S STANDARD) VINYL COVERED, TACKABLE WALL SURFACE - CLASS 1 FLAME SPREAD - VINYL, CLASS II FLAME SPREAD - FABRICATED PANEL 2
- FRP= FIBERGLASS REINFORCED PANELING
- ACT= SUSPENDED ACOUSTICAL CEILING TILE SYSTEM, HEAVY DUTY GRID
- P= PAINT
- FF= FACTORY FINISH

NOTES:

- 1. PAINT ALL EXPOSED SURFACES.
- 2. PROVIDE SOUND INSULATION TO FILL WALL CAVITY AT ALL INTERIOR WALLS. 2