



CHABOT- LAS POSITAS COMMUNITY COLLEGE DISTRICT

Facilities Planning & Management Department

October 12, 2011

Addendum No. 1 **INVITATION FOR INFORMAL BID NO.: 11-12-02** **SPF Roofing Project, Bldgs. 1700/2200, Las Positas College**

THIS ADDENDUM NO. 1 is issued to clarify, add, delete, correct and/or change the contract documents to the extent indicated and is hereby made a part of the above noted contract documents on which the contract will be based. Any modifications/changes made by this addendum affect only the portions or paragraphs specifically identified herein; all remaining portions of the proposal to remain in force. It is the responsibility of all bidders to conform to this addendum. Acknowledge receipt of this addendum in the space provided on the bid proposal form. Failure to do so may subject bidder to disqualification.

The original Bid Documents shall have the following clarification and modification by the revision as follows:

1. **Work Completion Date:** All work under this Bid/Contract shall be completed no later than July 2, 2012.
2. **Performance Bond:** A Performance Bond will be required for this project, see attached Performance Bond Form.
3. **Liquidated Damages:** The Contractor shall only schedule required work on HVAC equipment when classes are **not** in session, and is subject to assessment of Liquidated Damages of \$500.00 per day for each inoperable HVAC unit during each day classes are in session. The District may withhold such assessments from the Contract Price then or thereafter due the Contractor if the assessment of Liquidated Damages exceeds the remaining balance of the Contract Price, the Contractor and the Surety issuing the Performance Bond shall be jointly and severally liable to the District for such amounts.
4. **Spring Break Schedule** – The campus is closed for classes between April 9 -14, 2012.
5. **Ref: 3.05.C** - All pipe/conduit **>1" diameter** (O.D.) shall be supported . . . on C-Port (or equal) pipe supports.

6. **Condensate Drain Lines:** Replace all SPLIT OPEN or damaged copper condensate drain lines with new Sched. 40 PVC lines. Glue/weld all joints. Ensure adequate slope to drain lines at nearest roof drain. Minimum wood block size is 2"x4"x6" nominal. Fasten with metal tube straps screwed to block. Paint all PVC pipe with specified roof coating. Paint all wood blocking with roof coating, but do not allow coating to adhere block to the roof.
7. **Bldg. 2200 HVAC units** – Raise all units to provide a minimum clearance of 10" between the new roof surface and the bottom of the HVAC perimeter frame. All disconnections and reconnections of electrical power and ducts shall be performed by a licensed mechanical contractor.
8. **Bldg. 2200 New Roof Drains** – Replace existing sheet metal sump box drains with new 12" Marathon PVC Roof Drain (3" no Hub) with Cast Iron Dome. Provide 18"x18" 22 ga. GI sheet metal flange to support new roof drain. Fasten perimeter of flange over roof at 4" O.C.
9. **Bldg. 2200 New Counter Flashing** – On parapets <15" high, install new hemmed 5" 24 ga. GI counter flashing under the coping skirt leaving a minimum of 4" of counter flashing exposed. Fasten counter flashing with 3/4" screws at 12". On parapets >15" high terminate SPF within 6" of coping, and apply specified coating thickness to bottom of coping skirt. New counter flashing may be coated at contractor's option.
10. **Expansion Joint Detail** – See new detail D6 for expansion joint detail.
11. **Wall Flashing Detail** – See new detail D7 for wall flashing detail.
12. **Roof Hatch Safety Railing** – Provide and install one Safety Railing system on each roof, 1700 and 2200. Also provide and install one Safety Railing system on each hatch at Bldgs. 400, 600, and 2000.

ROOF HATCH FALL PROTECTION SAFETY RAIL AND LADDER EXTENSION SYSTEM:

- A. Basis of Design: Roof Hatch Fall Protection Safety Rail Model No. SP-3636 by SafePro L.P.
- B. Description: Steel tube railing system mounted on roof hatch providing an ergonomically correct power grip in a safe upright egress and ingress through roof hatches in addition to protection from accidental falls through roof opening while roof hatch is open. Includes top and mid-rail and wrap around self-closing gravity gate mounted with heavy duty hinges acting as a ladder extension.
 1. Steel Tubing: 1½" inch cold rolled electric welded steel tubing, ASTM A500, Grade B, cold formed.

2. Size: Formed to fit roof hatch size of 36 x 36 inches.
3. Height: 42 inch above roof surface when mounted on standard roof hatch cap flashing.
4. Mounting System: Integrated stanchions of rail system through bolted to extended cap flashing of roof hatch using 3/8 inch bolts.
5. Gate System: Gravity self-closing, non-collapsible full wrap around steel tubing grab hold, welded construction. Heavy duty hinges with 5/8 inch hinge pin with built in pinch-less gate stop and pull up full open positioning.
6. Fasteners: Stainless steel 316 Grade Hex head bolts, 3/8 inch x 2 inch, Nylon locking Hex nut and flat washers.
7. Labels: Furnish with manufacturer's standard labels containing safety warnings, fall dangers, "No Hoisting" warning and manufacturer identification.

C. Performance:

1. Meets and exceeds OSHA Standard CFR 29 1910.23 and CFR 29 1910.27.
2. Meet and exceeds Cal-OSHA §3212. Floor Openings, Floor Holes and Roofs and §3209. Standard Guardrails.

D. Fabrication: Factory formed and fully welded construction, free of sharp edges and snag points.

E. Finish: Factory finished with powder coating.

1. Powder Coat Finish: Manufacturer's standard powder coating; color: Safety Yellow.

Attachments: Performance Bond
D6, 1 page
D7, 1 page

If you have any questions regarding this Addendum No.1, please contact the Office of the Facilities Planning & Management in **writing, via facsimile or email**. All other terms and conditions of Informal Bid No.11-12-02 are to remain the same. Acknowledge receipt of this addendum in the space provided on the bid proposal form. Failure to do so may subject bidder to disqualification.

Regards,

Priscilla Burruss
Capital Projects Buyer
pburruss@clpccd.org

PERFORMANCE BOND

KNOW ALL MEN BY THESE PRESENTS that we, _____, as Principal, and _____ as Surety, are held and firmly bound unto **CHABOT-LAS POSITAS COMMUNITY COLLEGE DISTRICT** hereinafter "the Obligee", in the penal sum of _____ Dollars (\$_____) in lawful money of the United States, well and truly to be made, we bind ourselves, our heirs, executors, administrators, successors and assigns, jointly and severally.

THE CONDITION OF THIS OBLIGATION IS SUCH THAT:

WHEREAS, the Obligee, by resolution of its Board of Trustees has awarded to the Principal a Contract for the Work described as **BID NO.: 11-12-02 SPF Roofing Project, BLDGS 1700/2200 – LAS POSITAS COLLEGE.**

WHEREAS, the Principal, has entered into an agreement with the Obligee for performance of the Work; the Agreement and all other Contract Documents set forth therein are incorporated herein and made a part hereof by this reference.

WHEREAS, by the terms of the Contract Documents, the Principal is required to furnish a bond ensuring the Principal's prompt, full and faithful performance of the Work of the Contract Documents.

NOW THEREFORE, if the Principal shall promptly, fully and faithfully perform each and all of the obligations and things to be done and performed by the Principal in strict accordance with the terms of the Contract Documents as they may be modified or amended from time to time; and if the Principal shall indemnify and save harmless the Obligee and all of its officers, agents and employees from any and all losses, liability and damages, claims, judgments, liens, costs, and fees of every description, which may be incurred by the Obligee by reason of the failure or default on the part of the Principal in the performance of any or all of the terms or the obligations of the Contract Documents, including all modifications, and amendments, thereto, and any warranties or guarantees required thereunder; then this obligation shall be void; otherwise, it shall be, and remain, in full force and effect.

The Surety, for value received, hereby stipulates and agrees that no change, adjustment of the Contract Time, adjustment of the Contract Price, alterations, deletions, additions, or any other modifications to the terms of the Contract Documents, the Work to be performed thereunder, or to the Specifications or the Drawings shall limit, restrict or otherwise impair Surety's obligations or Obligee's rights hereunder; Surety hereby waives notice from the Obligee of any such changes, adjustments of Contract Time, adjustments of Contract Price, alterations, deletions, additions or other modifications to the Contract Documents, the Work to be performed under the Contract Documents, or the Drawings or the Specifications.

In the event of the Obligee's termination of the Contract due to the Principal's breach or default of the Contract Documents, within thirty (30) days after written notice from the Obligee to the Surety of the Principal's breach or default of the Contract Documents and Obligee's termination of the Contract, the Surety shall notify Obligee in writing of Surety's assumption of obligations hereunder by its election to either remedy the default or breach of the Principal or to take charge of the Work of the Contract Documents and complete the Work at its own expense ("the Notice of Election"); provided, however, that the procedure by which the Surety undertakes to discharge its obligations under this Bond shall be subject to the advance written approval of the Obligee, which approval shall not be unreasonably withheld, limited or restricted. The insolvency of the Principal or the Principal's mere denial of a failure of performance or default under the Contract Documents shall not by itself, without

the Surety's prompt, diligent inquiry and investigation of such denial, be justification for Surety's failure to give the Notice of Election or for its failure to promptly remedy the failure of performance or default of the Principal or to complete the Work.

In the event the Surety shall fail to issue its Notice of Election to Obligee within the time provided for hereinabove, the Obligee may thereafter cause the cure or remedy of the Principal's failure of performance or default or to complete the Work. The Principal and the Surety shall be each jointly and severally liable to the Obligee for all damages and costs sustained by the Obligee as a result of the Principal's failure of performance under the Contract Documents or default in its performance of obligations thereunder, including without limitation the costs of cure or completion exceeding the then remaining balance of the Contract Price; provided that the Surety's liability hereunder for the costs of performance, damages and other costs sustained by the Obligee upon the Principal's failure of performance under or default under the Contract Documents shall be limited to the penal sum hereof, which shall be deemed to include the costs or value of any Changes to the Work which increases the Contract Price.

In the event suit or other proceeding is brought upon this Bond by the Obligee, the Surety shall pay to the Obligee all costs, expenses and fees incurred by the Obligee therewith, including without limitation, attorneys fees.

IN WITNESS WHEREOF, the Principal and Surety have executed this instrument this _____ day of _____, 2011 by their duly authorized agent or representative.

(Principal's Corporate Seal)

(Principal Name)

By: _____

(Typed or Printed Name)

Title: _____

(Surety's Corporate Seal)

(Surety Name)

By: _____
(Signature of Attorney-in-Fact for Surety)

(Attach Attorney-in-Fact Certificate)

(Typed or Printed Name)

() _____
(Area Code and Telephone Number of Attorney-in-Fact for Surety)

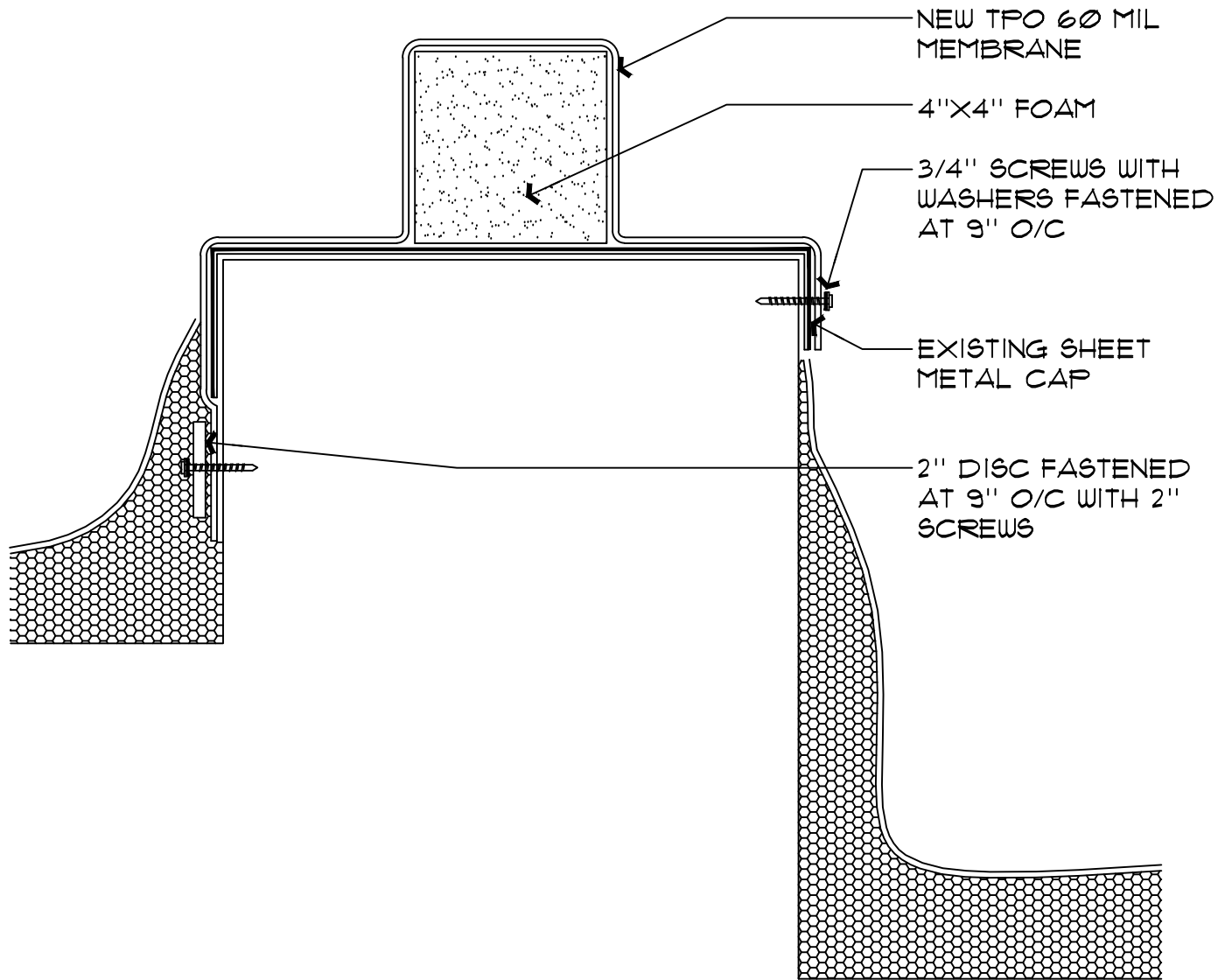
Contact name, address, telephone number and email address for notices to the Surety

(Contact Name)

Address)

(Telephone)

(Email address)



EXPANSION JOINT

SCALE: NOT TO SCALE

AMTECH
BUILDING SCIENCES, INC.

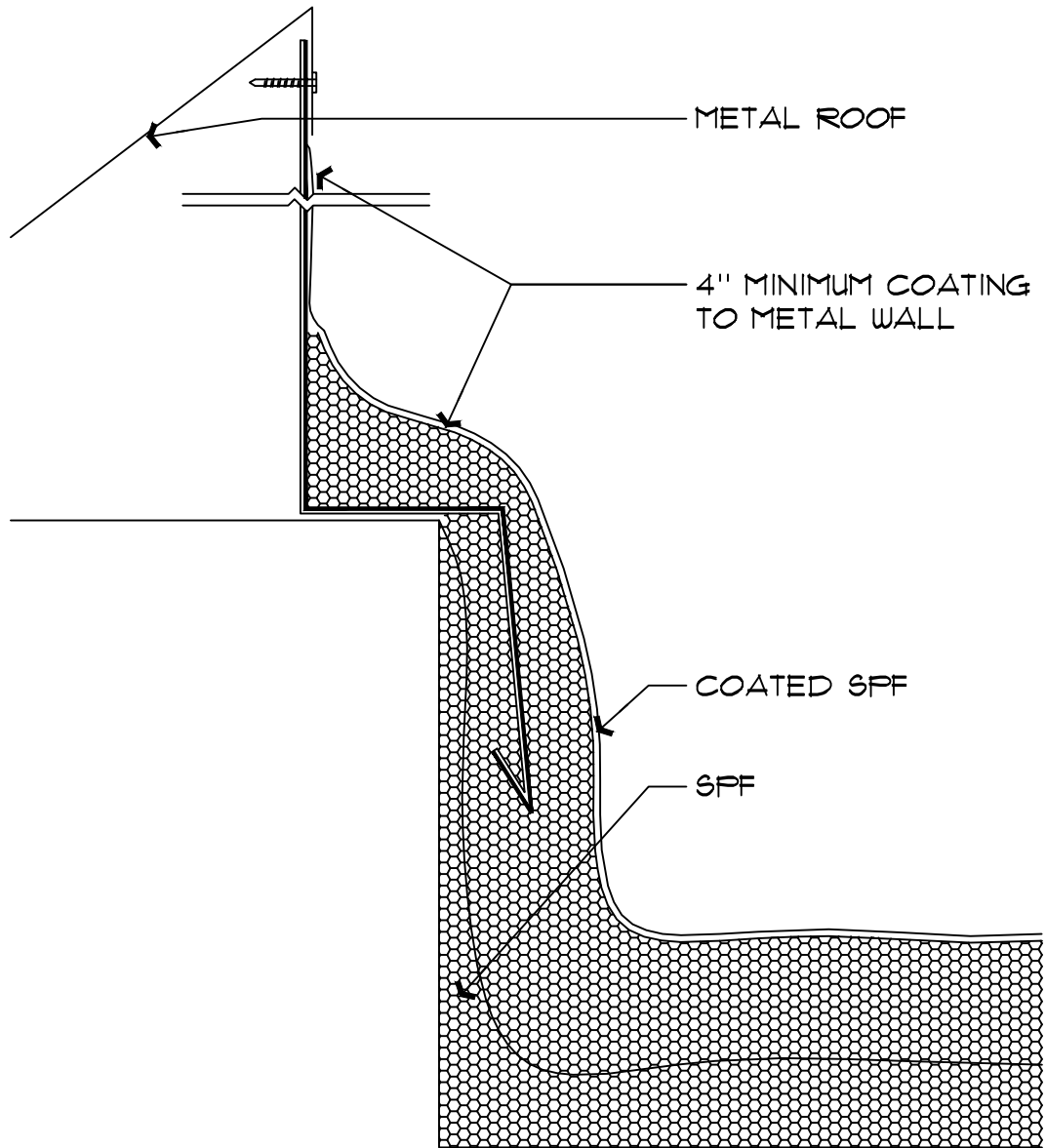
325 N. Austin Dr. Ste 3
Chandler, AZ. 85226

☎ 206.718.4883 ☎ 602.910.3003

CHABOT LAS POSITAS COMMUNITY COLLEGE DISTRICT
ROOFING AT LAS POSITAS COLLEGE - BLDGS 1700&2200
3033 COLLIER CANYON RD,
LIVERMORE, CA.

DRAWN BY: JG
SCALE: SEE DWG.
DATE: OCT. 2011
DRAWING NUMBER:

D6



BUILDING 1700 WALL FLASHING

SCALE: NOT TO SCALE



325 N. Austin Dr. Ste 3
Chandler, AZ. 85226

t 206.718.4883 f 602.910.3003

CHABOT LAS POSITAS COMMUNITY COLLEGE DISTRICT
ROOFING AT LAS POSITAS COLLEGE - BLDGS 1700&2200
3033 COLLIER CANYON RD,
LIVERMORE, CA.

DRAWN BY: JG
SCALE: SEE DWG.
DATE: OCT. 2011
DRAWING NUMBER:
D7