

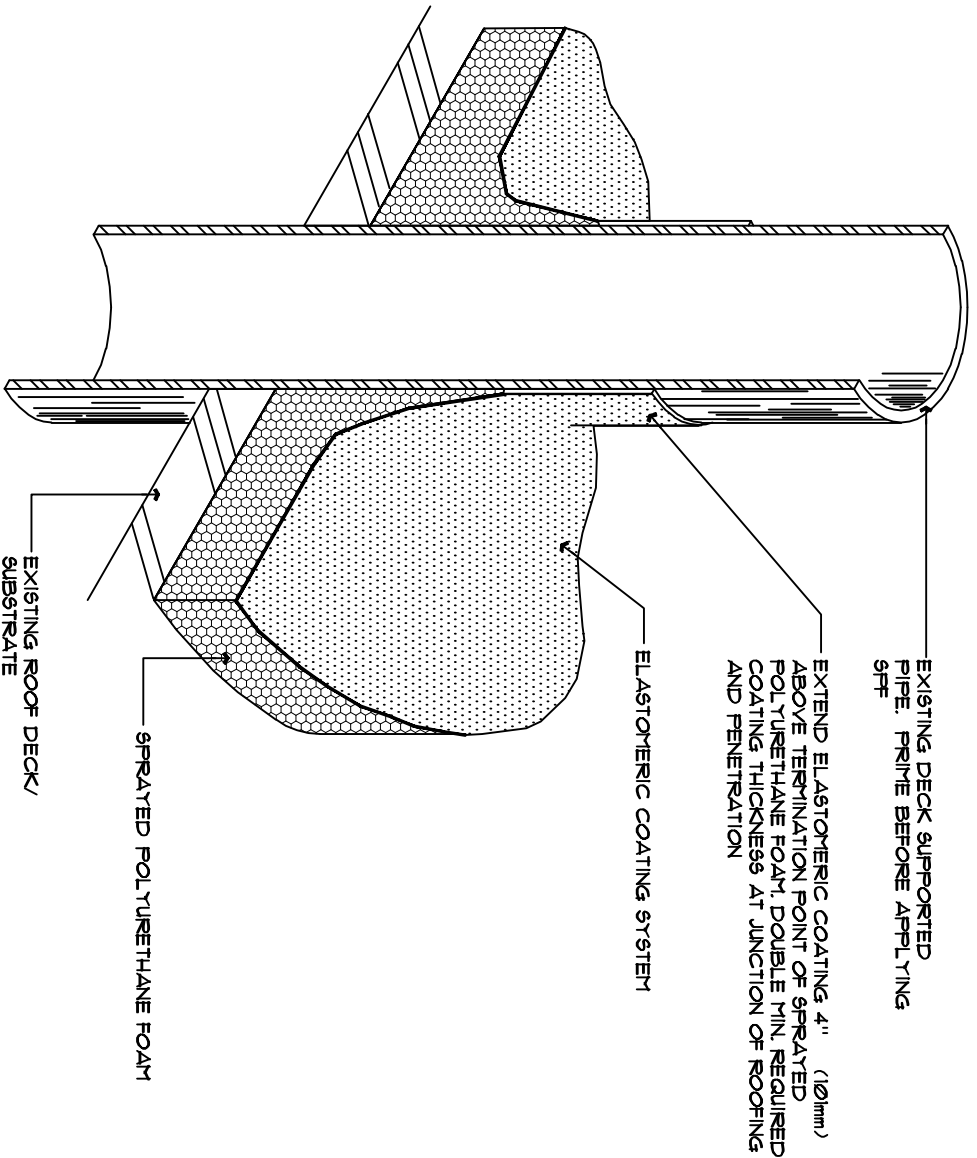
PITCH PAN

SCALE: NOT TO SCALE

AMTECH
 BUILDING SCIENCES, INC.
 670 International Parkway, Suite 180
 Richmond, Texas 75381
 ☎ 872.880.0044 ☎ 872.880.0061

SPF Roofing of Bldgs. 2000 - 2100
 CLPCCD - Las Positas College
 3033 Collier Canyon Road
 Livermore, CA. 94551

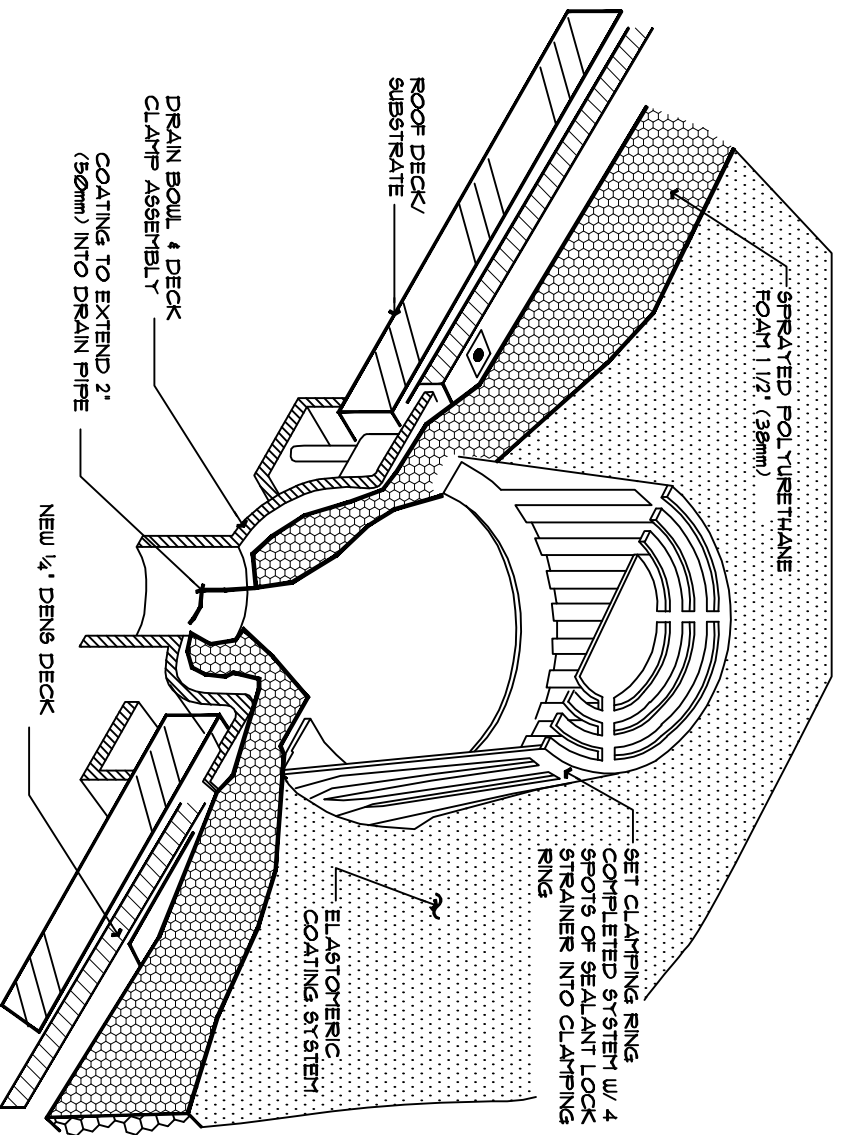
DRAWN BY: CB
 SCALE: SEE PLAN
 DATE: MAY 9, 2008
 DRAWING NUMBER:
D1



**ROOF VENT-PIPE PENETRATION
@ DECK SUPPORTED**

SCALE:

NOT TO SCALE

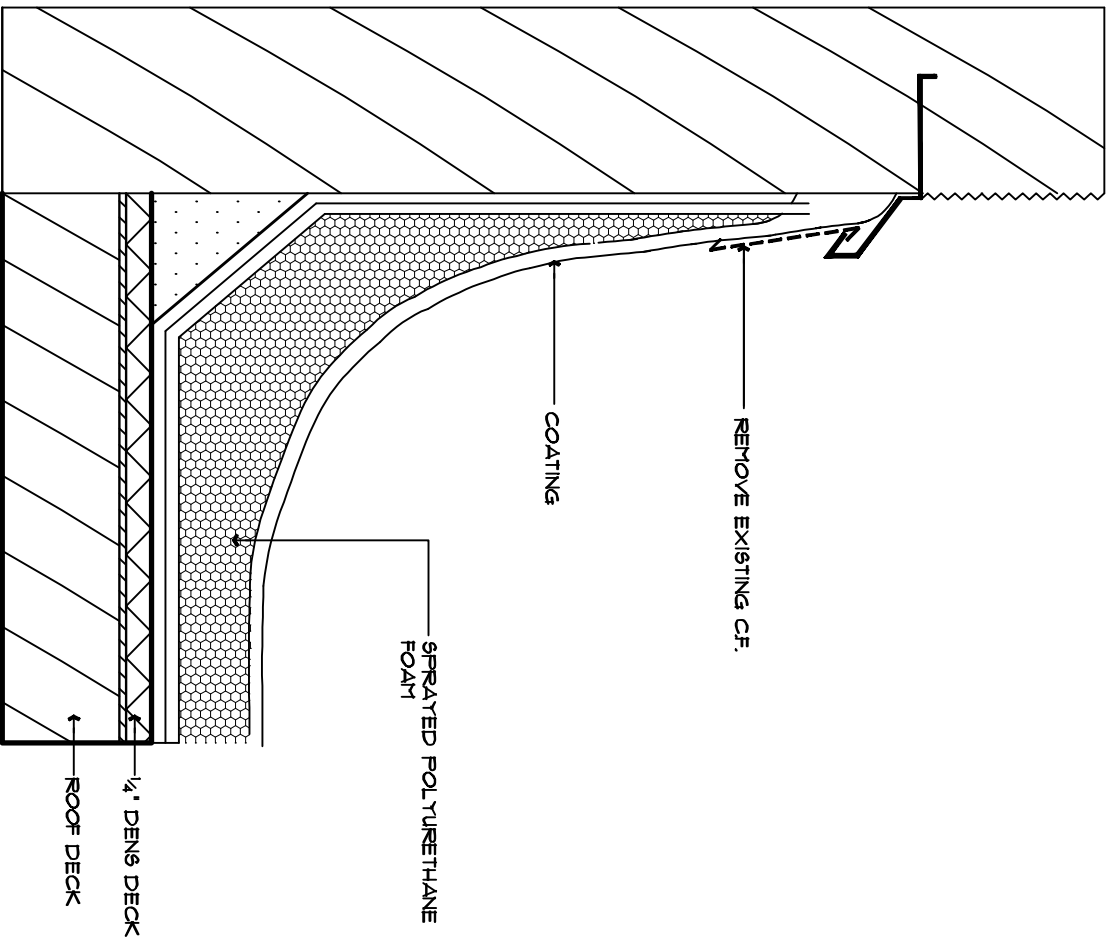


- NOTES:
1. FOAM MUST BE CUT OUT IF NECESSARY TO PRESERVE EXISTING DRAIN SIZE.
 2. TEMPORARILY COVER DRAIN TO PERFORM FOAM APPLICATION TO ENSURE NO DEBRIS ACCUMULATES IN DRAIN PIPE.
 3. SHAPE (GRIND) FOAM AROUND THE BOWL TO MAKE STRAINER FLAT AND IN CONTACT WITH ROOF TO PREVENT PASSAGE OF DEBRIS INTO DRAIN.
 4. SLOPE FOAM TO DRAIN TO PREVENT PONDING OF WATER AROUND DRAIN.

ROOF DRAIN

SCALE:

NOT TO SCALE



BASE FLASHING

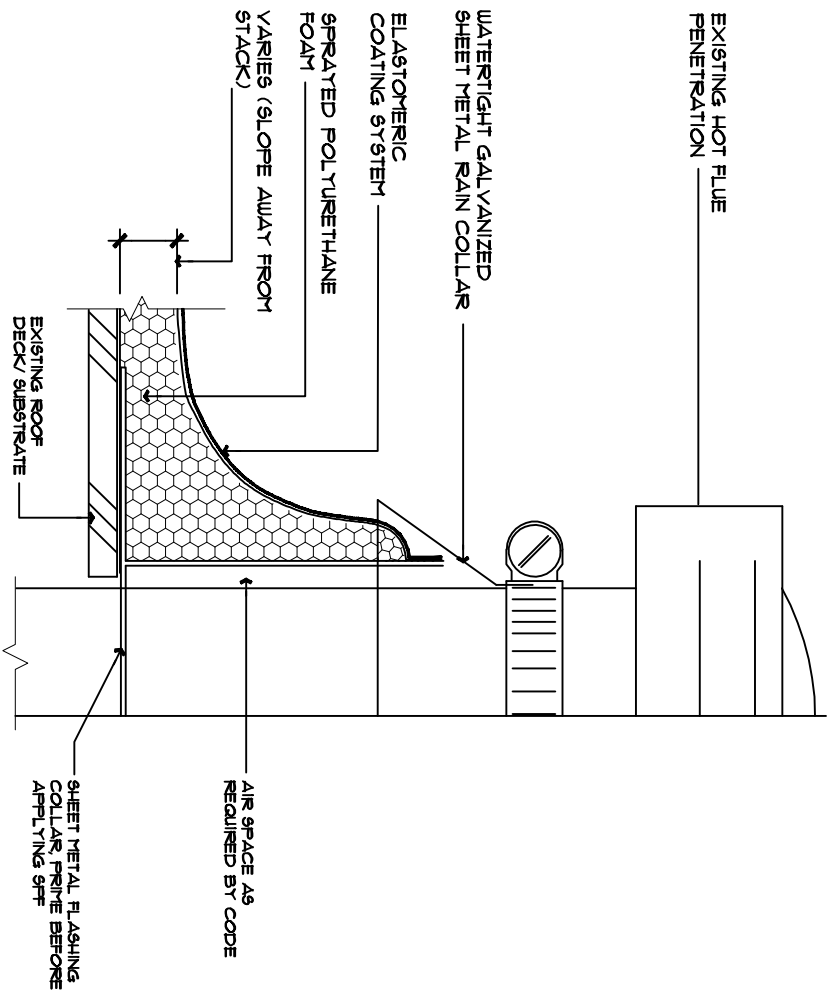
SCALE:

NOT TO SCALE

AMTECH
 BUILDING SCIENCES, INC.
 670 International Parkway, Suite 100
 Richmond, Texas 75351
 ☎ 872.860.0044 ☎ 872.860.0061

SPF Roofing of Bldgs. 2000 - 2100
 CLPCCD - Las Positas College
 3033 Collier Canyon Road
 Livermore, CA. 94551

DRAWN BY: CB
 SCALE: SEE PLAN
 DATE: MAY 9, 2008
 DRAWING NUMBER:
D4



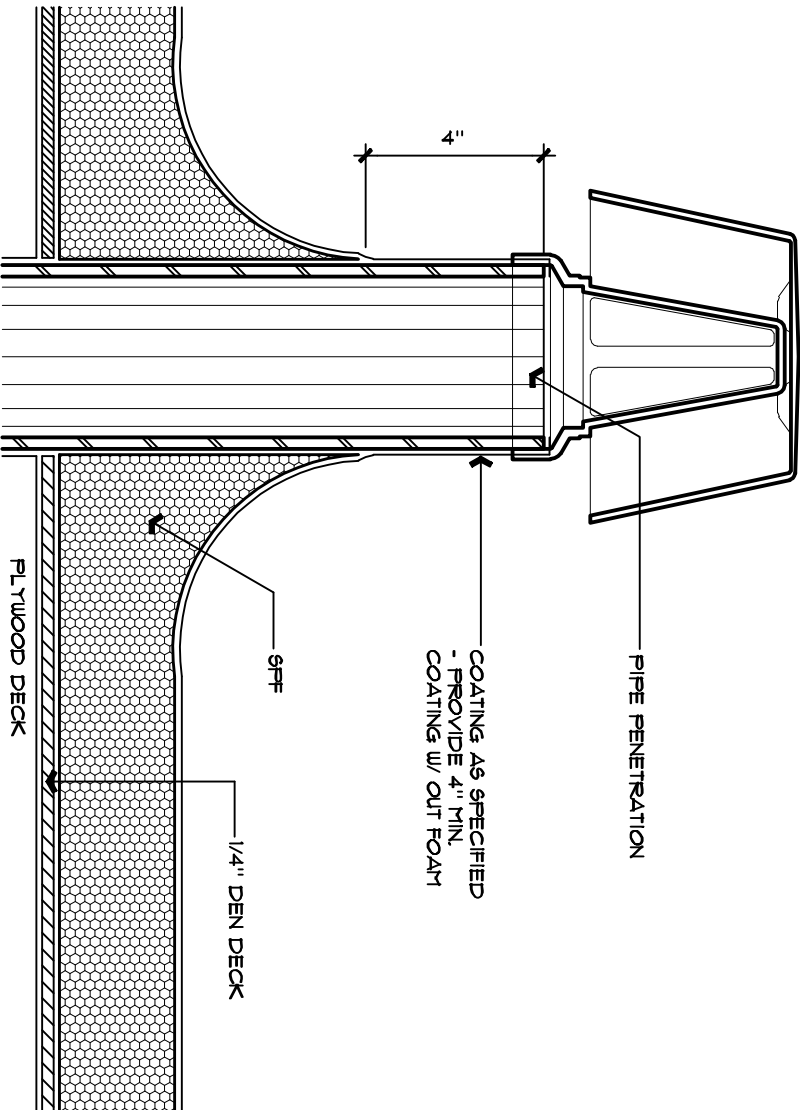
NOTES:

1. THIS DETAIL ACCOMMODATES INDEPENDENT DECK AND PENETRATION MOVEMENT.
2. VENT STACKS AND OTHER PIPES SHOULD HAVE A MINIMUM OF 12 INCHES (305mm) OF CLEARANCE ON ALL SIDES FROM WALLS, CURBS, AND OTHER PROJECTIONS TO FACILITATE PROPER FLASHING AND FURTHER WHERE REQUIRED BY CODE.

HOT STACK FLASHING

SCALE:

NOT TO SCALE



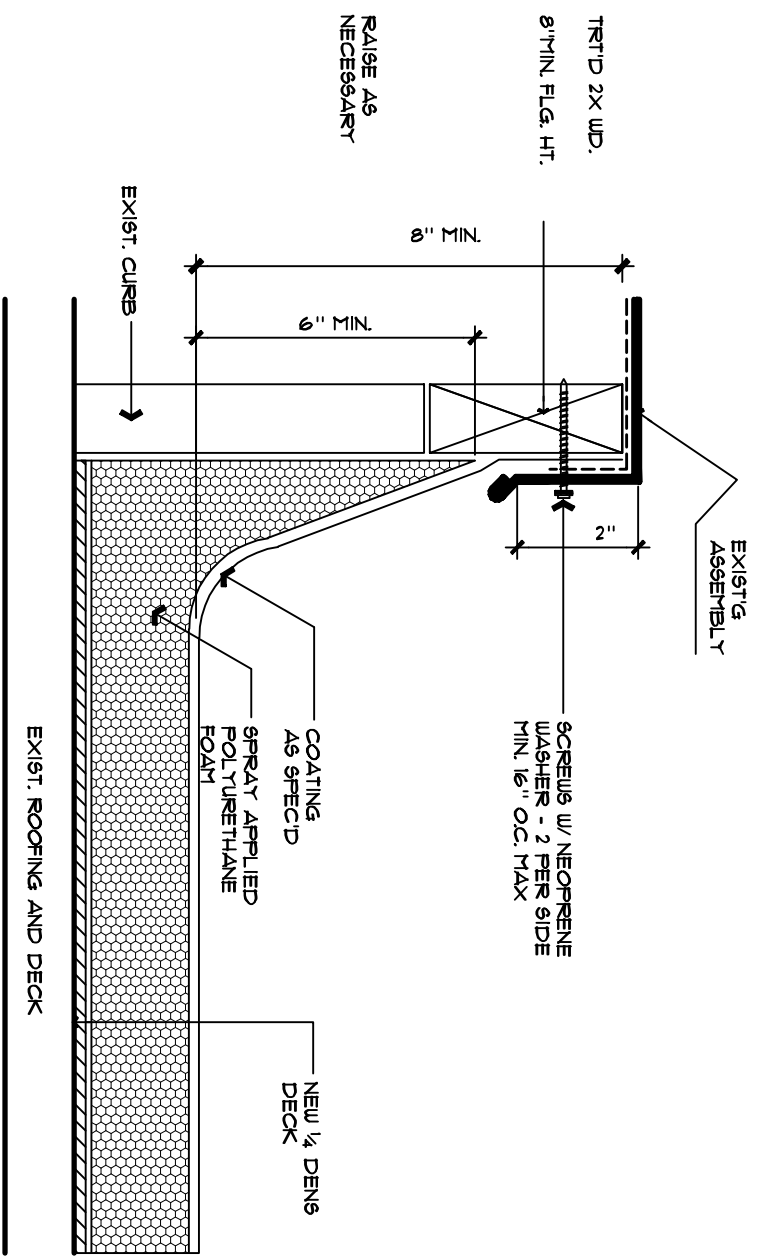
VENT STACK

SCALE: NOT TO SCALE

AMTECH
 BUILDING SCIENCES, INC.
 670 International Parkway, Suite 180
 Livermore, Texas 75001
 ☎ 972.880.0044 ☎ 972.880.0061

SPF Roofing of Bldgs. 2000 - 2100
 CLPCCD - Las Positas College
 3033 Collier Canyon Road
 Livermore, CA. 94551

DRAWN BY: CB
 SCALE: SEE PLAN
 DATE: MAY 9, 2008
 DRAWING NUMBER: D6



RAISE AS NECESSARY

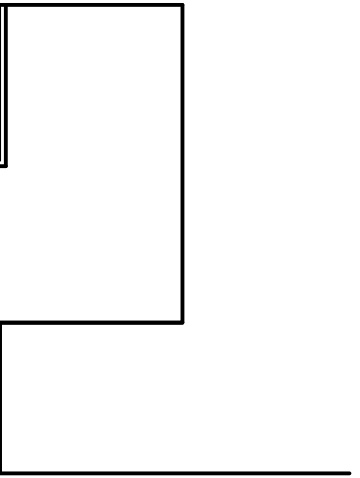
CURB

SCALE: NOT TO SCALE

AMTECH
 BUILDING SCIENCES, INC.
 670 International Parkway, Suite 100
 Rockport, Texas 75087
 ☎ 972.980.0044 ☎ 972.980.0061

SPF Roofing of Bldgs. 2000 - 2100
 CLPCCD - Las Positas College
 3033 Collier Canyon Road
 Livermore, CA. 94551

DRAWN BY: CB
 SCALE: SEE PLAN
 DATE: MAY 9, 2008
 DRAWING NUMBER: D1



PROVIDE REINFORCEMENT ANGLES @ EA. CORNER

EXIST. MTL. CURB ANCHOR @ 24" O.C.

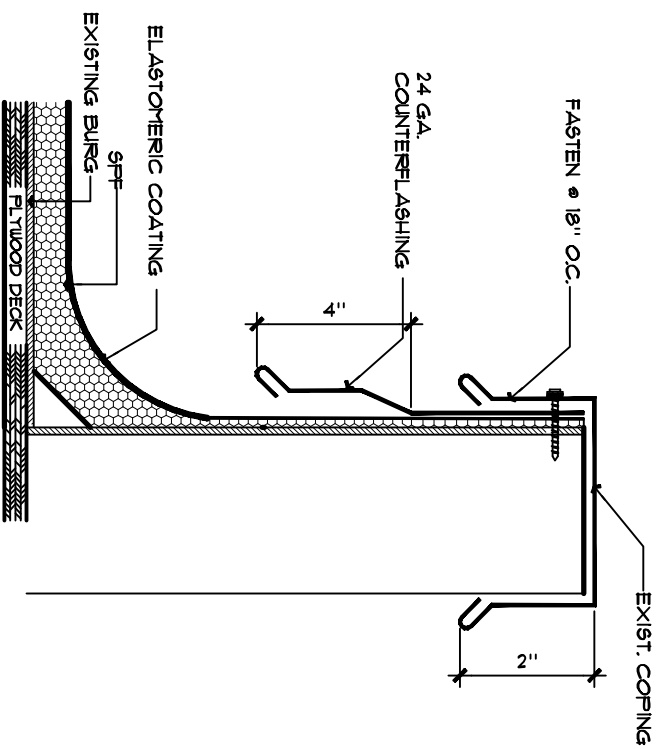
MIN 1/2" PLYWOOD

ELASTOMERIC COATING AS SPEC'D

SPRAY APPLIED POLYURETHANE FOAM

EXIST. ROOF DECK

2X6 SECURED TO DECK W/ SIMPSON
 - A24 ANGLE OR EQUAL @ 12" O.C.
 (MIN. 2 EA SIDE) FASTENED
 W/ NO. 10 GALV. SCREWS



PARAPET WALL FLASHING

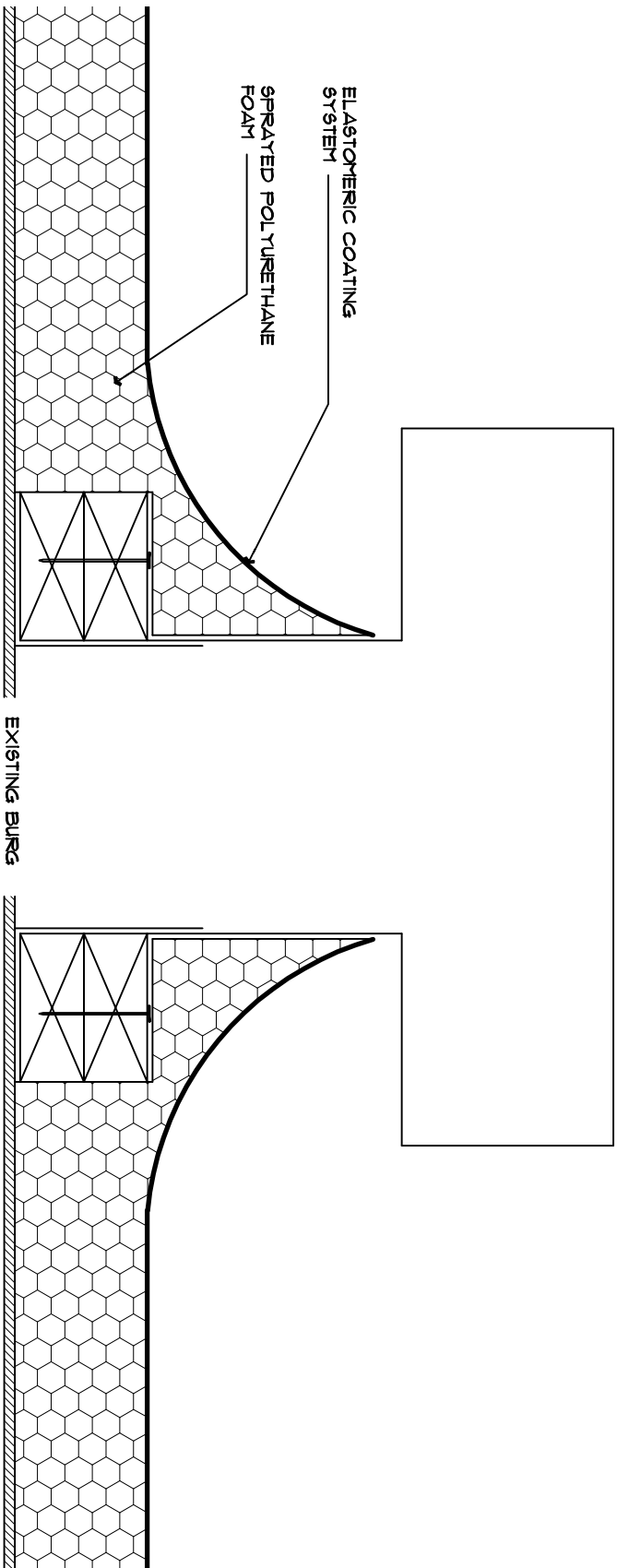
SCALE:

NOT TO SCALE

AMTECH
 BUILDING SCIENCES, INC.
 670 International Parkway, Suite 100
 Rockport, Texas 75087
 ☎ 972.860.0044 ☎ 972.860.0061

SPF Roofing of Bldgs. 2000 - 2100
 CLPCCD - Las Positas College
 3033 Collier Canyon Road
 Livermore, CA. 94551

DRAWN BY: CB
 SCALE: SEE PLAN
 DATE: MAY 9, 2008
 DRAWING NUMBER:
D9



BOX VENT DETAIL
 SCALE: NOT TO SCALE

AMTECH
 BUILDING SCIENCES, INC.
 670 International Parkway, Suite 180
 Rockport, Texas 75087
 ☎ 817.280.0044 ☎ 817.280.0061

SPF Roofing of Bldgs. 2000 - 2100
 CLPCCD - Las Positas College
 3033 Collier Canyon Road
 Livermore, CA. 94551

DRAWN BY: CB
 SCALE: SEE PLAN
 DATE: MAY 9, 2008
 DRAWING NUMBER: D10