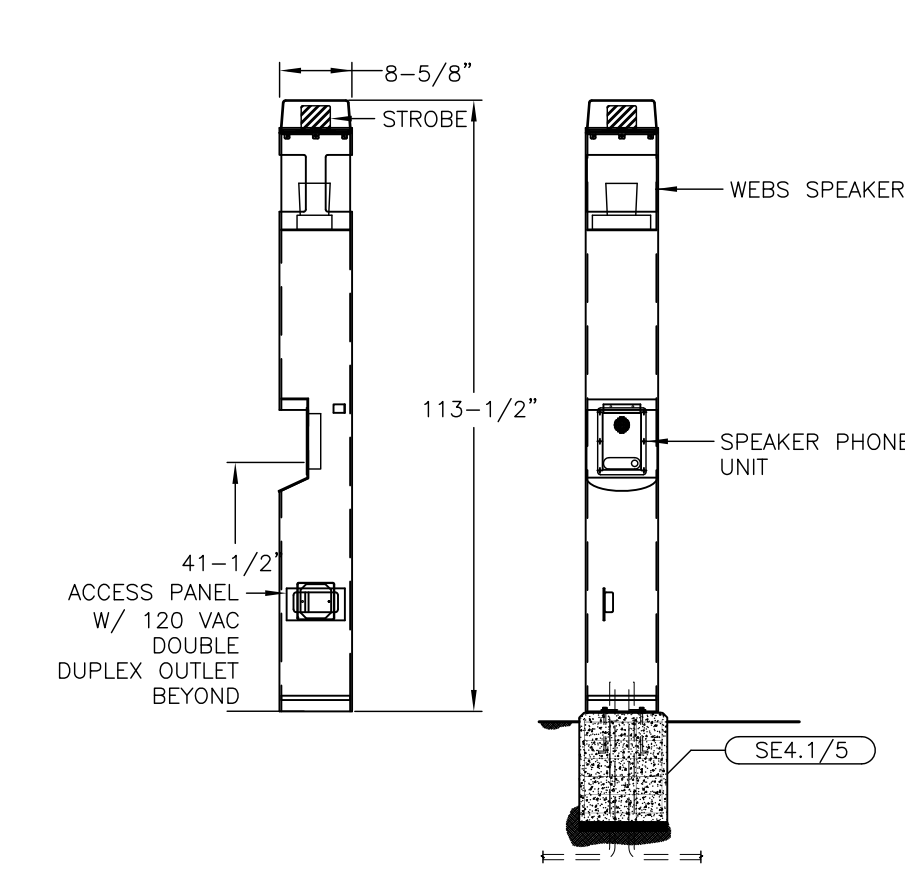
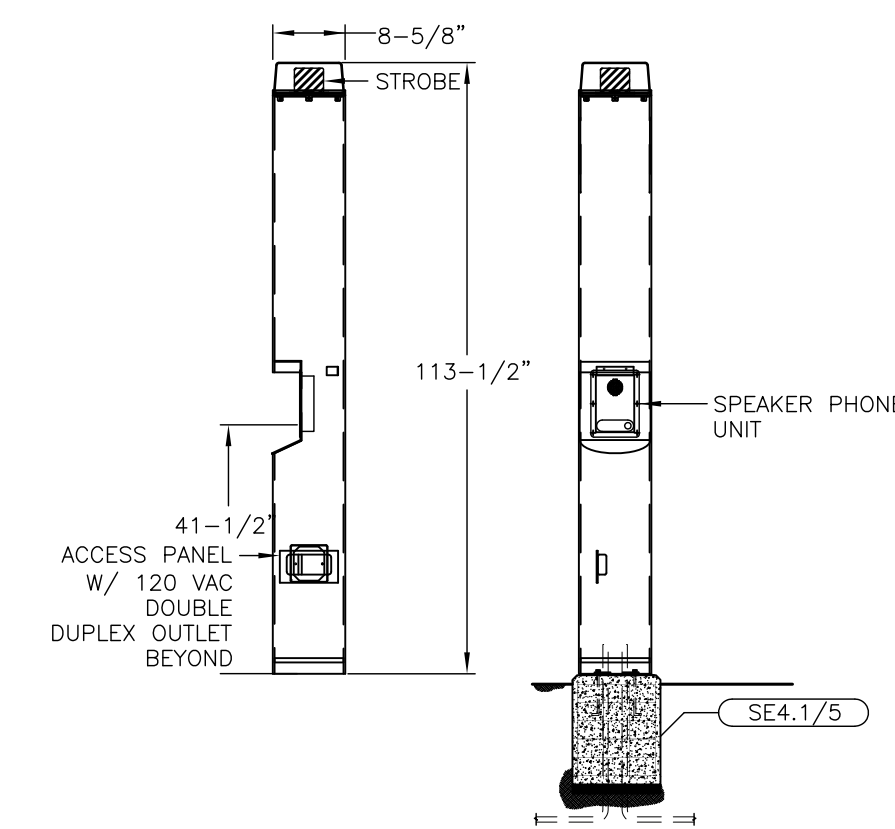
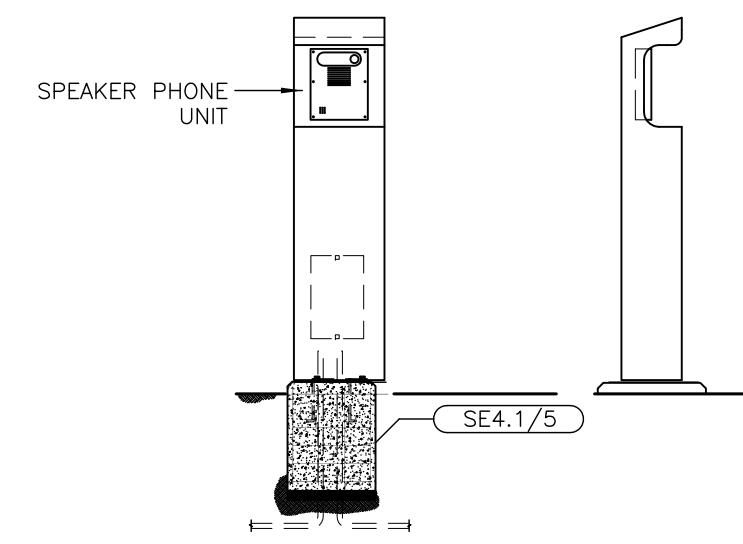
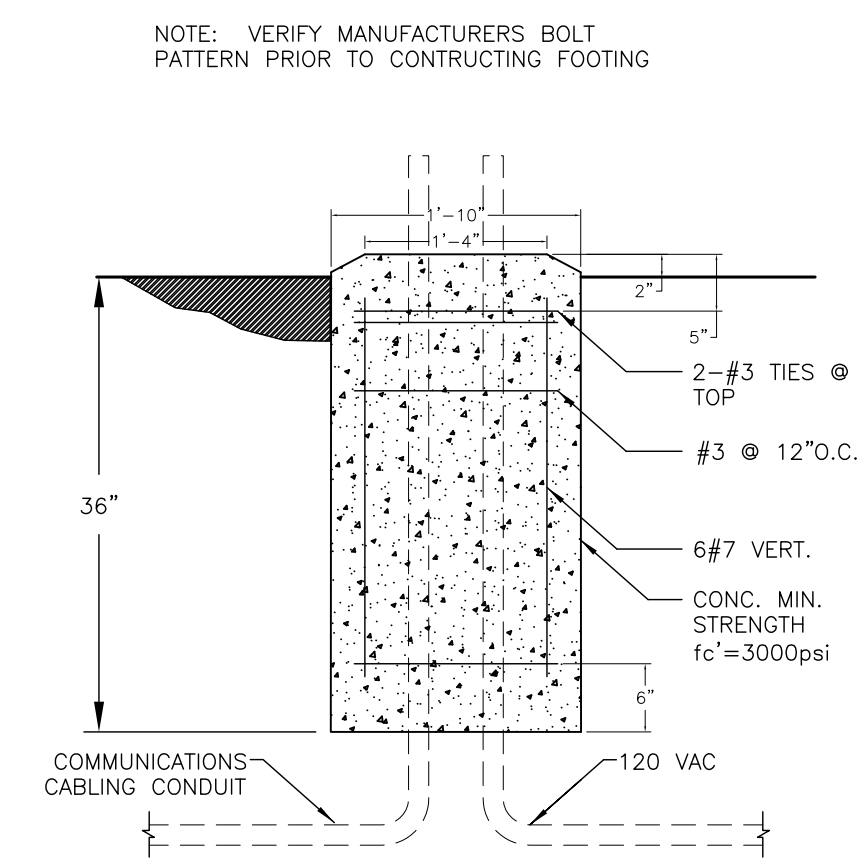


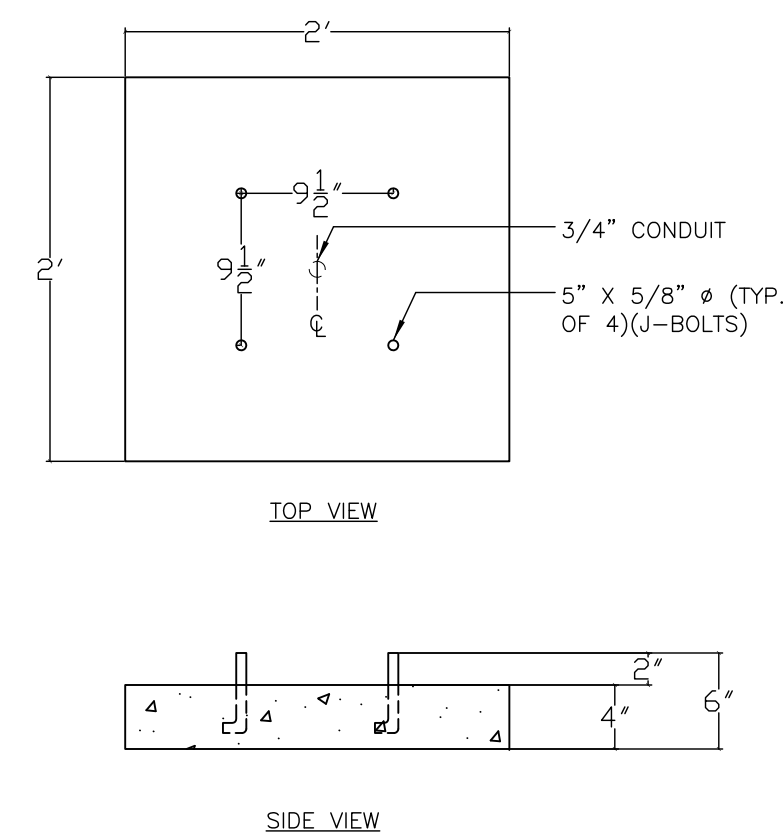
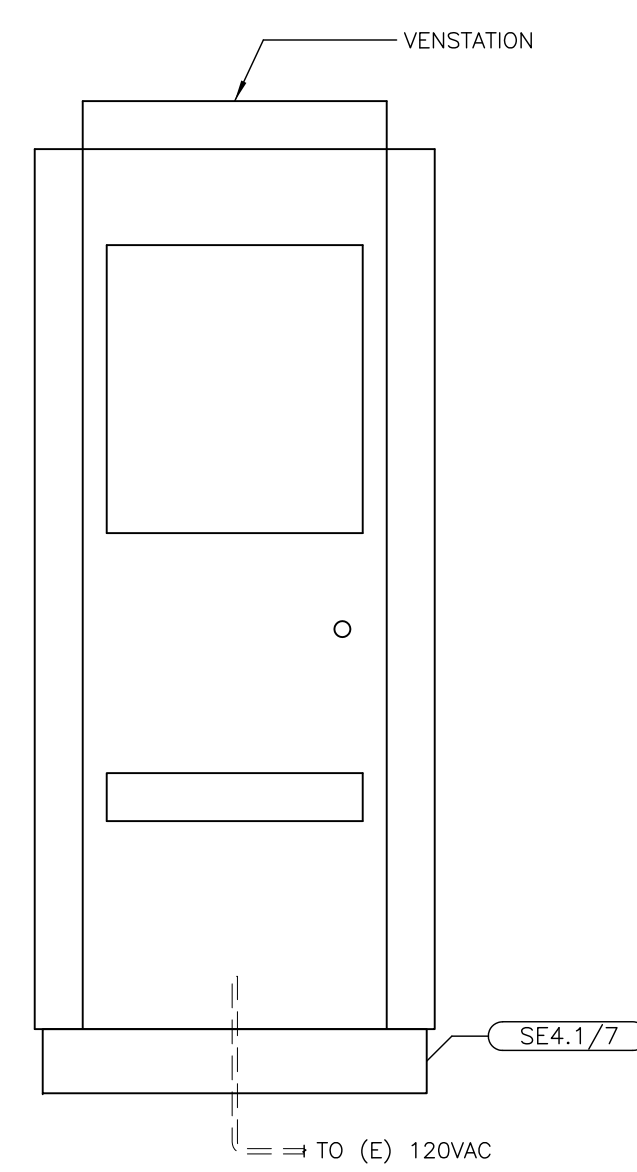


**CATALYST**  
CONSULTING GROUP, INC.

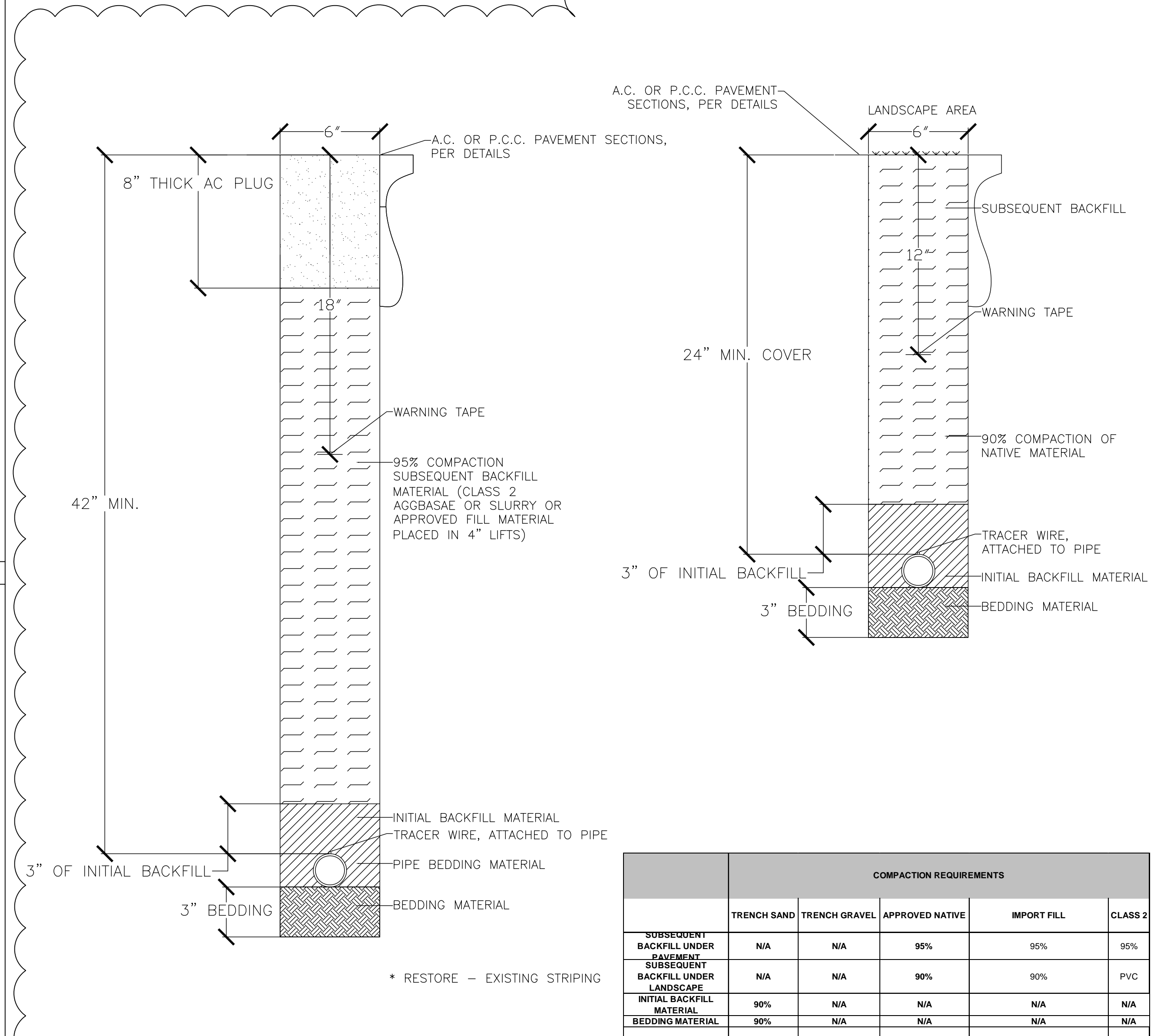
SECURITY PLANNING AND DESIGN  
2789 Napa Valley Corporate Drive  
Napa, CA 94558  
Voice: 707-224-3020  
Fax: 707-224-1377



5	EMERGENCY COMMUNICATION STATION BASE	NONE	4	EMERGENCY COMMUNICATION STATION - TYPE C	NONE	3	EMERGENCY COMMUNICATION STATION - TYPE B	NONE	2	EMERGENCY COMMUNICATION STATION - TYPE A	NONE
---	--------------------------------------	------	---	--	------	---	--	------	---	--	------



6	PARKING PERMIT MACHINE	NONE	7	PARKING PERMIT MACHINE BASE	NONE	8	NOT USED	NONE
---	------------------------	------	---	-----------------------------	------	---	----------	------



	COMPACTION REQUIREMENTS				
	TRENCH SAND	TRENCH GRAVEL	APPROVED NATIVE	IMPORT FILL	CLASS 2
SUBSEQUENT BACKFILL UNDER EQUIPMENT	N/A	N/A	95%	95%	95%
SUBSEQUENT BACKFILL UNDER LANDSCAPE	N/A	N/A	90%	90%	PVC
INITIAL BACKFILL MATERIAL	90%	N/A	N/A	N/A	N/A
BEDDING MATERIAL	90%	N/A	N/A	N/A	N/A

15	NOT USED	NONE	14	NOT USED	NONE	13	NOT USED	NONE	1	TRENCH DETAIL	NONE
----	----------	------	----	----------	------	----	----------	------	---	---------------	------

PROPRIETARY INFORMATION  
NO PART OF THIS DOCUMENT MAY BE COPIED, REPRODUCED OR TRANSMITTED IN ANY FORM OR BY ANY MEANS WITHOUT PRIOR WRITTEN CONSENT OF CATALYST CONSULTING GROUP, INC.

By	Revision	Date
KMW	BID DOCUMENTS	4/18/11
KMW	ADDENDUM #1	5/20/11

Project:  
**LAS POSITAS COLLEGE  
PHASE 2 - EMERGENCY  
COMMUNICATIONS  
SYSTEM**

Sheet Title:  
**SECURITY  
DEVICE DETAILS**

Job No: 09.535  
Scale: NONE  
Date: 6/2/09  
Sheet No:

**SE4.1**

NOT FOR CONSTRUCTION