





**LEGEND**

ALL DISTANCES AND DIMENSIONS ARE SHOWN IN FEET AND DECIMALS THEREOF.

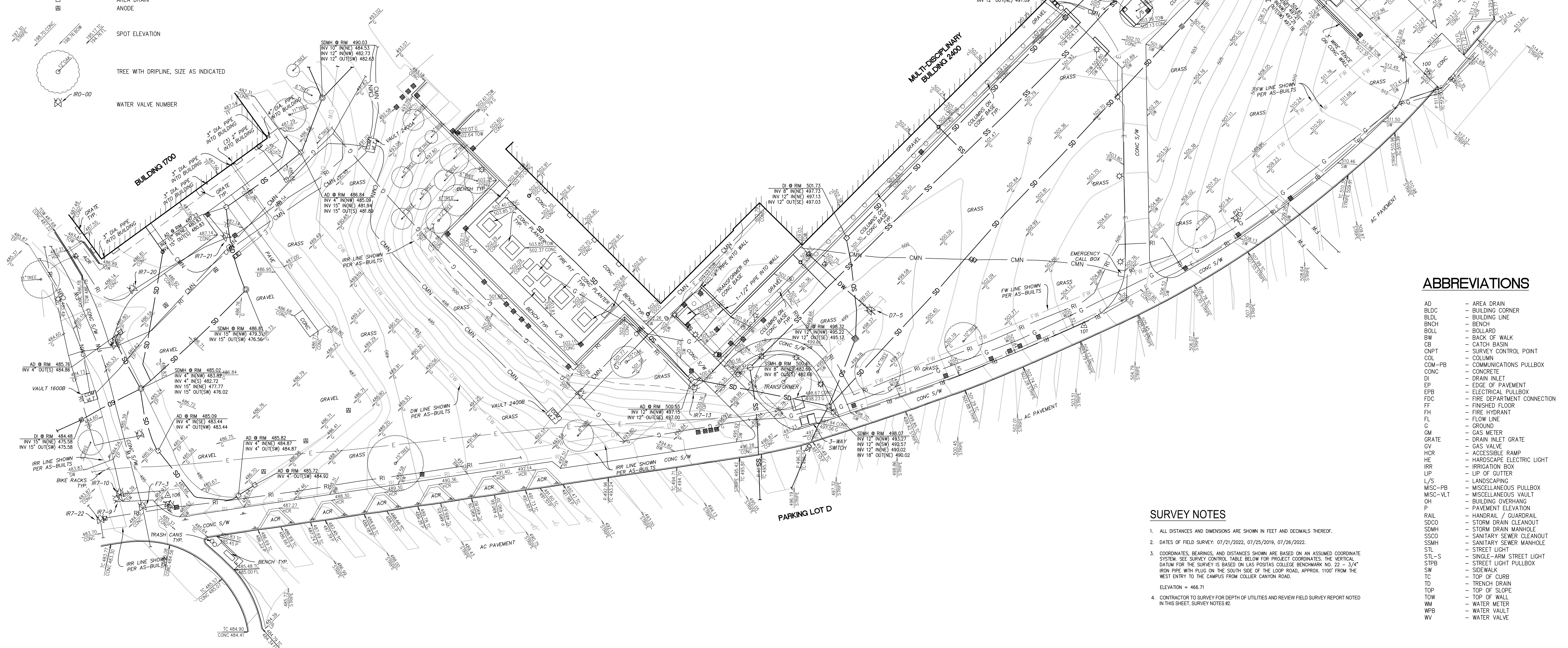
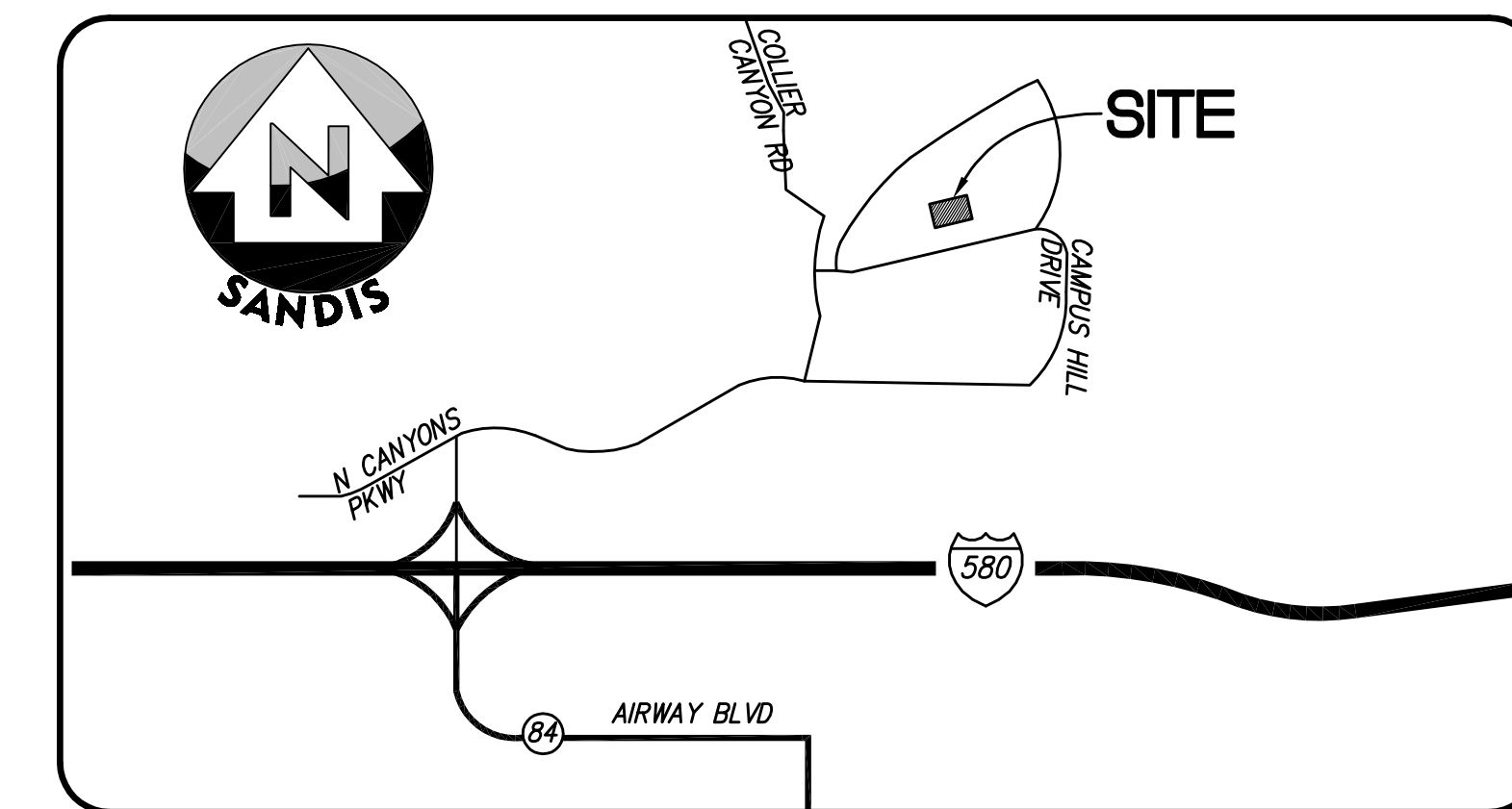
- BUILDING FACE
- BUILDING OVERHANG
- EDGE OF PAVEMENT
- CURB & GUTTER LINE
- RETAINING / SCREENING WALL, HEIGHT AS INDICATED
- 95  
94  
CONTOURS
- TOP OF SLOPE LINE
- SD  
STORM DRAIN LINE
- SS  
SANITARY SEWER LINE
- DW  
DOMESTIC WATER LINE
- FW  
FIRE WATER LINE
- FW  
FIRE WATER LINE (DRAWN FORM AS-BUILTS)
- G  
NATURAL GAS LINE
- E  
UNDERGROUND ELECTRIC LINE
- CMN  
COMMUNICATION LINE
- JT  
JOINT TRENCH LINE
- JT  
JOINT TRENCH LINE (DRAWN FORM AS-BUILTS)
- RI  
IRRIGATION LINE
- RI  
IRRIGATION LINE (DRAWN FORM AS-BUILTS)
- SMH  
STORM DRAIN MANHOLE
- SD  
STORM DRAIN CLEANOUT
- DI  
DRAIN INLET
- SSMH  
SANITARY SEWER MANHOLE
- SSCO  
SANITARY SEWER CLEANOUT
- WM  
WATER METER / BOX
- WV  
WATER VALVE
- FH  
FIRE HYDRANT
- FDC  
FIRE DEPARTMENT CONNECTION
- ICB  
IRRIGATION CONTROL / VALVE BOX
- GM  
GAS METER
- GV  
GAS VALVE
- COM-PB  
COMMUNICATIONS VAULT / PULLBOX
- EV  
ELECTRIC VAULT / PULLBOX
- HE  
HARDSCAPE ELECTRIC LIGHT
- ELP  
ELECTROLER ON TOP OF POLE
- ELMA  
ELECTROLER WITH MAST ARM
- SLPB  
STREET LIGHT PULLBOX
- MPB  
MISCELLANEOUS PULLBOX
- S  
SIGN
- B  
BOLLARD
- AD  
AREA DRAIN
- AN  
ANODE

**SURVEY CONTROL TABLE**

Point #	Elevation	Northing	Easting	Description
100	512.49	12244.29	12494.57	CUT X
101	504.49	12119.84	12326.11	CUT X
106	485.23	12036.37	11876.04	CUT X

**UNDERGROUND UTILITY NOTE**

THE TYPES, LOCATIONS, SIZES AND/OR DEPTHS OF EXISTING UNDERGROUND UTILITIES AS SHOWN ON THIS TOPOGRAPHIC SURVEY ARE APPROXIMATE AND WERE OBTAINED FROM SOURCES OF VARYING RELIABILITY. ONLY ACTUAL EXCAVATION WILL REVEAL THE TYPES, EXTENT, SIZES, LOCATIONS AND DEPTHS OF SUCH UNDERGROUND UTILITIES. A REASONABLE EFFORT HAS BEEN MADE TO LOCATE AND DELINEATE ALL KNOWN UNDERGROUND UTILITIES. HOWEVER, THE ENGINEER CAN ASSUME NO RESPONSIBILITY FOR THE COMPLETENESS OR ACCURACY OF ITS DELINEATION OF SUCH UNDERGROUND UTILITIES WHICH MAY BE ENCOUNTERED, BUT WHICH ARE NOT SHOWN ON THIS SURVEY. AS-BUILT UTILITIES LINES SHOWN AS LIGHTER COLOR IN THIS TOPOGRAPHIC SURVEY.



**ABBREVIATIONS**

- AD - AREA DRAIN
- BOLD - BUILDING CORNER
- BOLD - BUILDING LINE
- BENCH - BENCH
- BOLL - BOLLARD
- BW - BACK OF WALK
- CB - CATCH BASIN
- CNPT - SURVEY CONTROL POINT
- COL - COLUMN
- COM-PB - COMMUNICATIONS PULLBOX
- CONC - CONCRETE
- DI - DRAIN INLET
- EP - EDGE OF PAVEMENT
- EPB - ELECTRICAL PULLBOX
- FDC - FIRE DEPARTMENT CONNECTION
- FF - FINISHED FLOOR
- FH - FIRE HYDRANT
- FL - FLOW LINE
- G - GROUND
- GM - GAS METER
- GRATE - DRAIN INLET GRATE
- GV - GAS VALVE
- HCR - ACCESSIBLE RAMP
- HE - HARDSCAPE ELECTRIC LIGHT
- IBR - IRRIGATION BOX
- LIP - LIP OF GUTTER
- L/S - LANDSCAPING
- MISC-PB - MISCELLANEOUS PULLBOX
- MISCVLT - MISCELLANEOUS VAULT
- OH - BUILDING OVERHANG
- P - PAVEMENT ELEVATION
- RAIL - HANDRAIL / GUARDRAIL
- SDCO - STORM DRAIN CLEANOUT
- SDMH - STORM DRAIN MANHOLE
- SSCO - SANITARY SEWER CLEANOUT
- SSMH - SANITARY SEWER MANHOLE
- STL - STREET LIGHT
- STL-S - SINGLE-ARM STREET LIGHT
- STIPB - STREET LIGHT PULLBOX
- SW - SIDEWALK
- TC - TOP OF CURB
- TD - TRENCH DRAIN
- TOW - TOP OF SLOPE
- TOW - TOP OF WALL
- WM - WATER METER
- WPB - WATER VAULT
- WV - WATER VALVE

**SURVEY NOTES**

- ALL DISTANCES AND DIMENSIONS ARE SHOWN IN FEET AND DECIMALS THEREOF.
- DATES OF FIELD SURVEY: 07/21/2022, 07/25/2019, 07/26/2022.
- COORDINATES, BEARINGS, AND DISTANCES SHOWN ARE BASED ON AN ASSUMED COORDINATE SYSTEM. SEE SURVEY CONTROL TABLE BELOW FOR PROJECT COORDINATES. THE VERTICAL DATUM FOR THE SURVEY IS BASED ON LAS POSITAS COLLEGE BENCHMARK NO. 22 - 3/4" IRON PIPE WITH PLUG ON THE SOUTH SIDE OF THE LOOP ROAD, APPROX. 1100' FROM THE WEST ENTRY TO THE CAMPUS FROM COLLIER CANYON ROAD.
- CONTRACTOR TO SURVEY FOR DEPTH OF UTILITIES AND REVIEW FIELD SURVEY REPORT NOTED IN THIS SHEET, SURVEY NOTES #2.

NO PART OF THIS DOCUMENT MAY BE REPRODUCED IN ANY FORM INCLUDING PHOTOCOPY, RECORDING OR ANY INFORMATION RETRIEVABLE AND STORAGE SYSTEM, WITHOUT PERMISSION IN WRITING FROM SANDS.



**BUILD ON.**  
SANDS.NET

DATE: 08/05/2022  
SCALE: 1" = 20'  
DRAWN BY: EV  
APPROVED BY: CC  
DRAWING NO.: 618184

No.	REVISION/ISSUE	DATE	BY

TOPOGRAPHIC SURVEY  
LAS POSITAS COLLEGE - BUILDING 2400/PARKING LOT D  
LIVERMORE CALIFORNIA

SHEET  
**1**  
OF 1 SHEETS







# MATERIALS SCHEDULE

ITEM	DESCRIPTION	FINISH	COLOR	MANUFACTURER	CATALOG NO. / DIMENSIONS	NOTES
<b>PAVING</b>						
	GRANITECRETE PAVING	-	NATURAL GOLD (ADMIXTURE COLOR)	AMERICAN SOIL & STONE 510.292.3000, GRANITECRETE 800.670.0849	GOLD PATH FINES (3/8" MINUS), GRANITECRETE ADMIXTURE	-
	METAL HEADER AT GRANITECRETE PAVING	ANODIZED	BLACK	PERMALOC 800.356.9660	3/16" X 4" CLEANLINE ALUMINUM EDGING	-
	MOW BAND	LIGHT BROOM	NATURAL GREY	-	12" WIDE X 6" DEPTH CONCRETE	-
	BID ALTERNATE #2: METAL PAVER EDGE RESTRAINT AT LABYRINTH	ANODIZED	BLACK	PERMALOC 800.356.9660	4" X 3" ASPHALTEDE ALUMINUM EDGING	-
	BID ALTERNATE #2: LABYRINTH	-	CHARCOAL FIELD WITH BUFF LINES	LABYRINTH COMPANY 203.832.3815	Abingdon à la Chartres 6 CIRCUIT LABYRINTH KIT, 23'-7.25" O.D., 2-3/8" THICK CONCRETE PAVERS OVER COMPACTED AGGREGATE BASE	-
<b>FURNISHING</b>						
	BOULDER SEATING	TOP: THERMAL SIDES: SPLIT	SIERRA WHITE GRANITE	COLDSRING GRANITE 800.328.5040	MONOLITHIC CUT GRANITE: SMALL: 24" HT. X 18" W. X 24" L. MEDIUM: 24" HT. X 18" W. X 36" L. LARGE: 24" HT. X 18" W. X 48" L.	SURFACE MOUNT
	BID ALTERNATE #1: STONE AMPHITHEATER SEATING	TOP: THERMAL SIDES: SPLIT	SIERRA WHITE GRANITE	COLDSRING GRANITE 800.328.5040	MONOLITHIC CUT GRANITE: SMALL: 24" HT. X 18" W. X 24" L. MEDIUM: 24" HT. X 18" W. X 36" L. LARGE: 24" HT. X 18" W. X 48" L.	EMBEDDED IN SLOPE
	ENTRY SIGN	PAINTED	T.B.D.	THOMAS SWAN SIGN CO., INC. CONTACT: BRUCE THOMAS 415.760.2031	SIGN: LETTER HEIGHTS VARY DEPENDING ON THE LETTER, 2'-6" MIN. TO 3'-4" MAX. TALL PAINTED ALUMINUM LETTER FORMS MOUNTED TO PRECAST WALL	-
	PRECAST WALL AT ENTRY SIGN	LIGHT SANDBLAST / CRAFTSMAN ETCH	FRENCH GRAY	QCP CORP. CONTACT: NEIL ELENZWEIG 415.971.9669	PRECAST CONCRETE STEEL-REINFORCED WALL WITH INTEGRAL COLOR. INSTALL OVER POURED-IN-PLACE CONCRETE FOOTING.	-
	30' FLAGPOLE	SATIN	ALUMINUM/WHITE	BOLANDER & SONS 800.434.5611	LTJ30', 30' HT. EXPOSED, INTERNAL HALYARD	-
	25' FLAGPOLE	SATIN	ALUMINUM/WHITE	BOLANDER & SONS 800.434.5611	LTJ25', 25' HT. EXPOSED, INTERNAL HALYARD	-
F1	KEPLERO MINI LED WALL WASH LIGHT	-	-	TARGETTI 714.513.1991	14 WATT LED LIGHT PRODUCES 957 LUMENS FIXTURES ARE EQUIPPED WITH 4/1 DRIVER (NON-DIMMABLE / 0-10V) IT COMES IN 120V - 277V COLOR TEMPERATURES - 3000K  FIXTURE: LIGHTING SUPPLY #KPLM-41-VV-L1-40	MOUNTING: FLUSH AND SEMI FLUSH MOUNT WITH OPTIONAL L BRACKET  VOLT: UNV  LAMPS: 14W LED 3000K Rø84 CRI

F2	KEPLERO MINI LED ZOOM SPOT LIGHT	-	-	TARGETTI 714.513.1991	14 WATT LED LIGHT PRODUCES 1156 LUMENS FIXTURES ARE EQUIPPED WITH 4/1 DRIVER (NON-DIMMABLE / 0-10V) IT COMES IN 120V - 277V COLOR TEMPERATURES - 3000K  FIXTURE: LIGHTING SUPPLY #KPLM-41-ZM-L2-40	MOUNTING: AND SEMI FLUSH MOUNT WITH OPTIONAL L BRACKET  VOLT: UNV  LAMPS: 14W LED 3000K Rø84 CRI
F3	CAMPUS STANDARD POLE LIGHT. SEE NOTE #1 KIPP POST	-	-	LOUIS POULSEN 954.349.2525	82 WATT LED LIGHT PRODUCES 7472 LUMENS FIXTURES ARE EQUIPPED WITH DRIVER IT COMES IN 120V - 277V COLOR TEMPERATURES - 3000K  FIXTURE: LIGHTING SUPPLY VARIANT NUMBER: 5747920671	MOUNTING: RSA-4.5" POLES  VOLT: UNV  LAMPS: 82W 3000K

AUTHORITY APPROVAL



## GENERAL NOTES

- PERFORM WORK IN ACCORDANCE WITH APPLICABLE CODE REQUIREMENTS AND APPLICABLE REQUIREMENTS OF ALL OTHER REGULATORY AGENCIES.
- UNLESS OTHERWISE SPECIFIED, SPECIFIC REFERENCES TO CODES, REGULATIONS, STANDARDS, MANUFACTURERS' INSTRUCTIONS OR REQUIREMENTS OF REGULATORY AGENCIES, WHEN USED TO SPECIFY REQUIREMENTS FOR MATERIALS OF DESIGN ELEMENTS SHALL MEAN THE LATEST EDITION OF EACH IN EFFECT AT THE DATE OF SUBMISSION OF BIDS, OR THE DATE OF THE CHANGE ORDER OR FIELD ORDERS, AS APPLICABLE.
- COORDINATE ALL WORK WITH EXISTING CONDITIONS, INCLUDING, BUT NOT LIMITED TO, IRRIGATION PIPES, ELECTRICAL CONDUIT, WATER LINES, DRAINAGE LINES, GAS LINES, ETC.
- PROTECT ALL SITE CONDITIONS TO REMAIN INCLUDING TREES, PLANTING, PAVING, LIGHT STANDARDS, ETC.
- DETAILS SHOWN ARE TYPICAL. SIMILAR DETAILS APPLY IN SIMILAR CONDITIONS.
- INSTALL ALL EQUIPMENT AND MATERIALS PER MANUFACTURER'S RECOMMENDATIONS.
- WHERE 'VERIFY' OR 'VERIFY IN FIELD' IS USED IN CONJUNCTION WITH A DIMENSION, THE CONTRACTOR SHALL VERIFY THE MEASUREMENT PRIOR TO COMMENCING THE WORK. IMMEDIATELY BRING DISCREPANCIES TO THE ATTENTION OF THE ARCHITECT.
- PRIOR TO CONSTRUCTION, CONTRACTOR SHALL VERIFY WITH THE DISTRICT AND ARCHITECT ANY AND ALL ITEMS TO BE SAVED FOR REUSE, AND SHALL REMOVE AND STORE THEM IN A PROTECTED AREA ON THE JOBSITE, OR AS DIRECTED BY THE SCHOOL DISTRICT AND ARCHITECT.

KEY PLAN

## LAYOUT NOTES

- ALL DIMENSIONS, UNLESS OTHERWISE INDICATED, ARE TO FACE OF WALL OR STRUCTURE, OR BACK OF CURB.
- WRITTEN DIMENSIONS ALWAYS TAKE PRECEDENCE OVER SCALED DIMENSIONS. IF THERE IS A CONFLICT, NOTIFY THE DISTRICT AND LANDSCAPE ARCHITECT FOR CLARIFICATION.
- SAW CUT EXISTING CONCRETE PAVING OR CURBS AS REQUIRED TO ACCOMMODATE NEW CONSTRUCTION. ARCHITECT TO APPROVE LOCATIONS OF SAW CUTS PRIOR TO CUTTING.
- INSTALL NEW EXPANSION JOINTS WITHOUT DOWELS AT ALL LOCATIONS WHERE CONCRETE PAVING ABUTS WALLS OR OTHER VERTICAL SURFACES.
- INSTALL EXPANSION JOINTS WITH DOWELS EVERYWHERE ELSE.
- THIS PLAN DOES NOT REPRESENT A PROPERTY LINE SURVEY. PROPERTY LINES SHOWN HEREON MAY NOT REPRESENT THE TRUE POSITION OF THE LINE.
- EXISTING FEATURES AND TOPOGRAPHIC INFORMATION HAVE BEEN TAKEN FROM A SURVEY PROVIDED BY SANDIS DATED AUGUST 5TH, 2022. KELLER MITCHELL & CO. LANDSCAPE ARCHITECTURE ASSUMES NO LIABILITY REGARDING THE ACCURACY OF THE EXISTING FEATURES OR TOPOGRAPHIC INFORMATION SHOWN.

## GRADING NOTES

- CALL UNDERGROUND SERVICE ALERT (USA) @ (800) 642-2444 TO LOCATE EXISTING UTILITIES PRIOR TO ANY EXCAVATIONS AND/OR REMOVALS.
- (E) GRADES ARE TAKEN FROM A TOPOGRAPHICAL SURVEY DATED 08/05/2023.
- SLOPE UNIFORMLY BETWEEN GIVEN ELEVATIONS UNLESS OTHERWISE INDICATED. MAKE TRANSITIONS BETWEEN CHANGES IN VERTICAL GRADIENT SMOOTH AND FLOWING, WITH NO ABRUPT CHANGES IN PLANE.
- ALL LANDSCAPE PAVING AND HARDSCAPE ELEMENTS SHALL BE CONSTRUCTED IN ACCORDANCE WITH THE LANDSCAPE GRADING PLANS.

## PLANTING NOTES

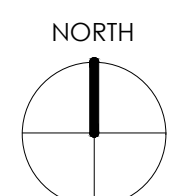
- PLANTING PLAN PROVIDES A GUIDE FOR GENERAL PLANTING LAYOUT ONLY. FINAL LAYOUT SHALL BE APPROVED BY THE ARCHITECT PRIOR TO INSTALLATION. FIELD ADJUSTMENTS MAY BE MADE AT THIS TIME.
- CONTRACTOR SHALL COORDINATE AND VERIFY THE LOCATION OF UNDERGROUND UTILITIES WITHIN WORK AREAS PRIOR TO INSTALLING NEW UTILITIES OR EXCAVATION OF LARGER PLANTING HOLES AND SHALL BE RESPONSIBLE FOR THEIR PROTECTION.
- LOCATIONS OF ALL PLANT MATERIAL SHALL BE APPROVED BY ARCHITECT PRIOR TO EXCAVATING PLANTING HOLES.
- PLANT SPACING SHALL TAKE PRECEDENCE OVER IRRIGATION VALVE BOX, PIPE AND OTHER EQUIPMENT LOCATIONS.
- ALL VALVE BOX LOCATIONS SHALL BE APPROVED BY THE ARCHITECT PRIOR TO INSTALLATION.

DRAWING TITLE

LANDSCAPE  
GENERAL NOTES

SHEET NO.

L-001

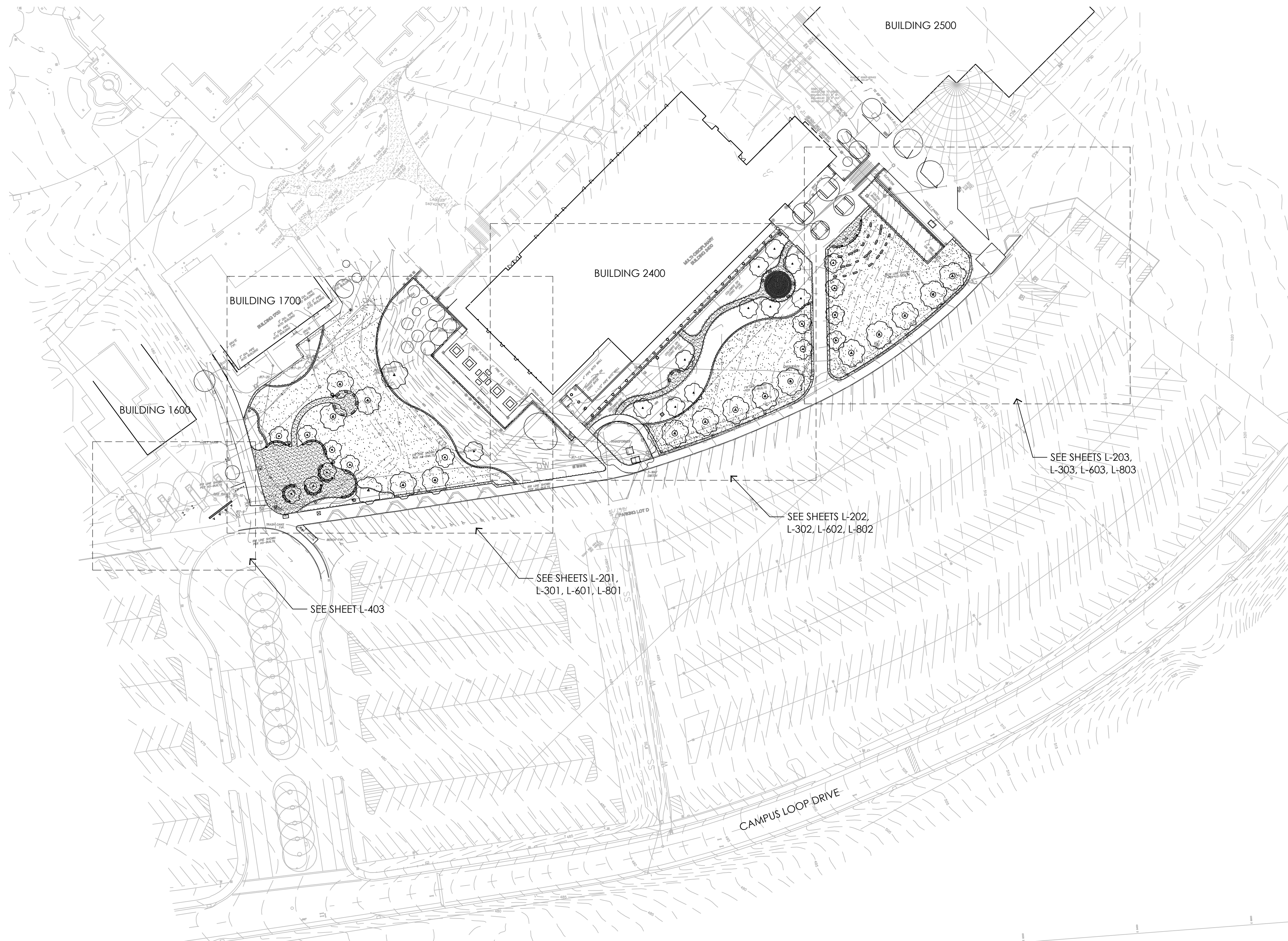


PROJECT NO.  
22202

SCALE  
N.T.S.

DRAWN BY  
SH

# OVERALL SITE PLAN



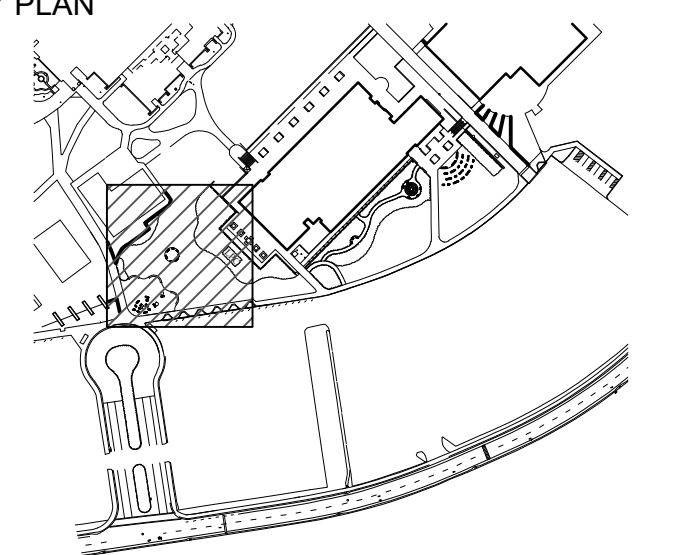




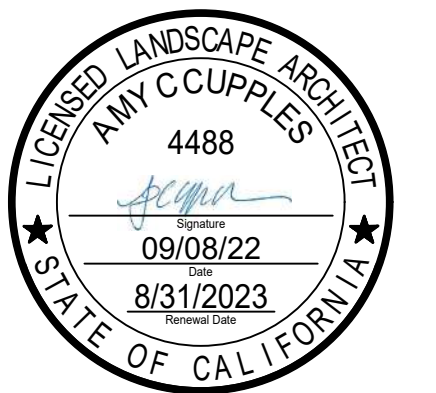


**Keller Mitchell & Co.**  
Landscape Architecture  
1970 Broadway, Suite 800  
Oakland, California, 94612  
T (510) 451-9987  
F (510) 452-9987  
www.kellermitchell.com

KEY PLAN



**CLPCCD - LAS POSITAS COLLEGE**  
**LANDSCAPE RENOVATION**  
3000 CAMPUS HILL DRIVE,  
LIVERMORE, CA 94551



Date	Issue
01/19/2023	BID SET

DRAWING TITLE

LAYOUT PLAN

SHEET NO.

L-201

PROJECT NO.

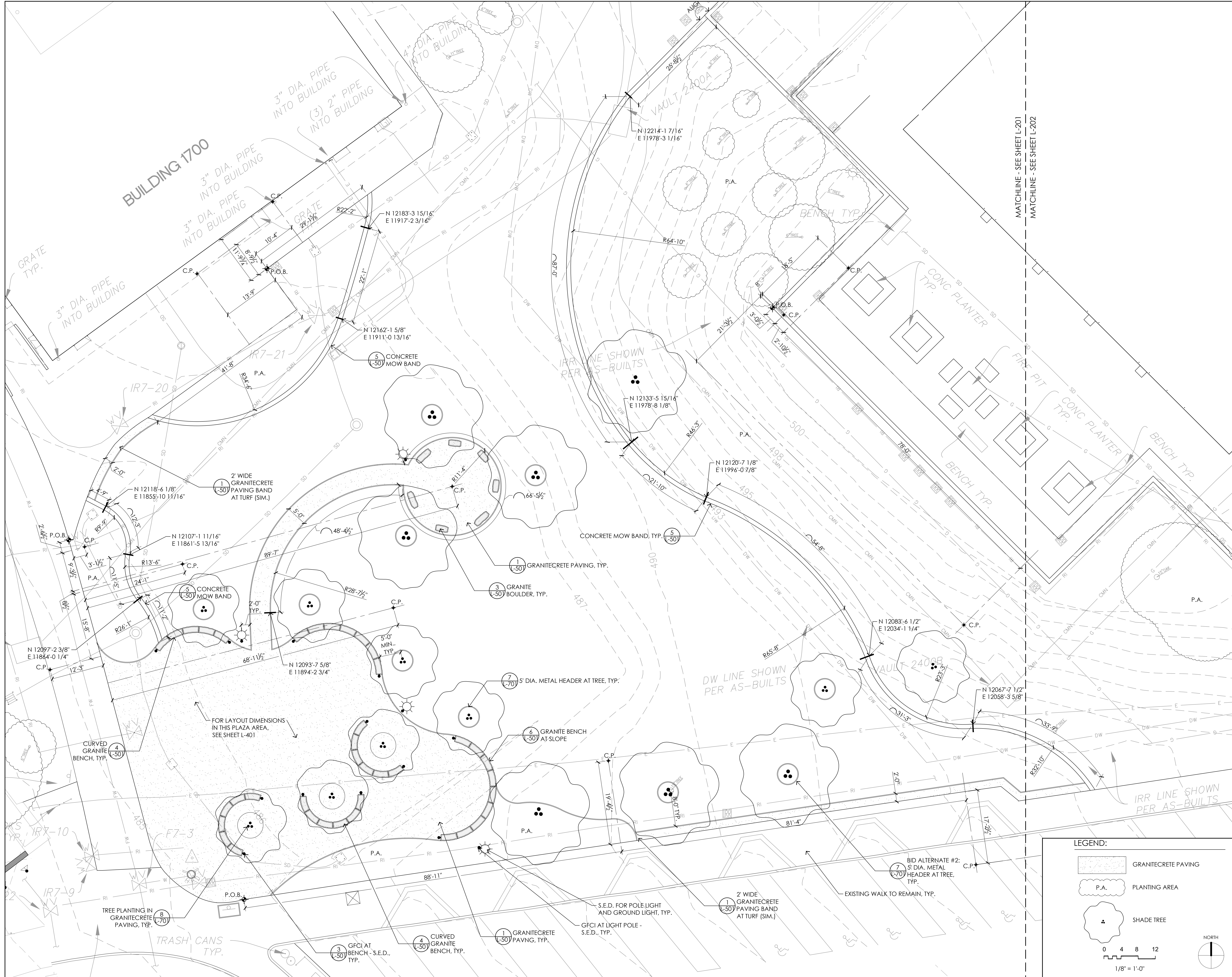
22202

SCALE

1/8" = 1'-0"

DRAWN BY

SH















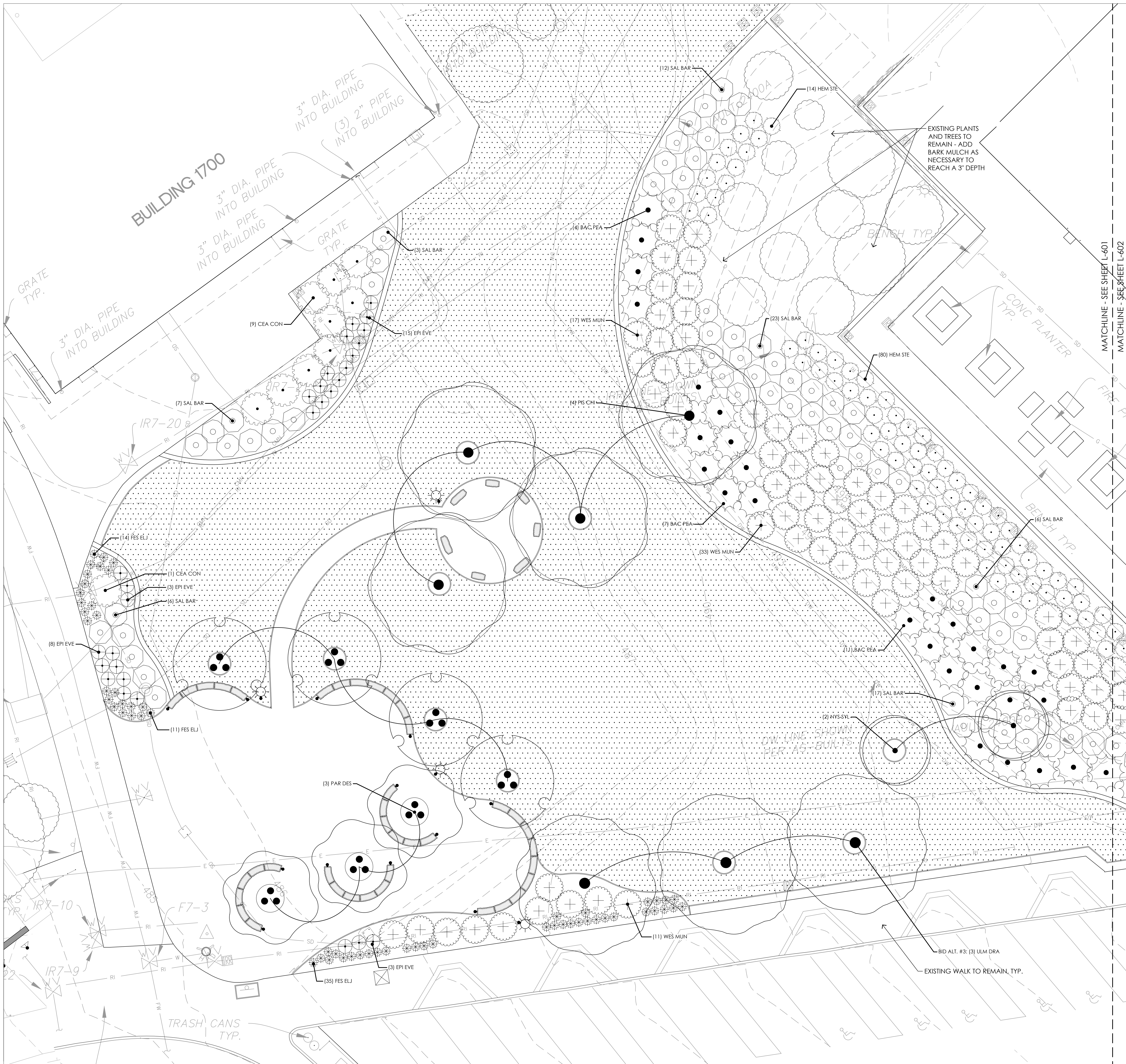








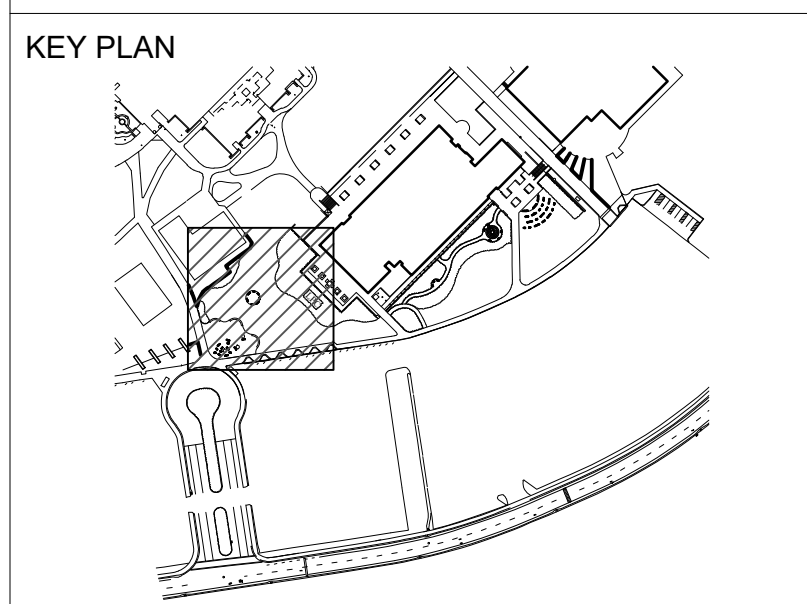




- PLANTING NOTES:**
1. REMOVE COMPACTED SOIL AROUND BUILDING IN AREAS TO BE PLANTED.
  2. SUBMIT SOIL AND SOIL AMENDMENT TEST REPORT FOR ARCHITECT'S REVIEW PRIOR TO PURCHASE OF PLANTS.
  3. REMOVE ALL LIME TREATED SOIL IN ALL PLANT AREAS TO A DEPTH OF THREE FEET AND DISPOSE OF OFF SITE.
  4. ALL PLANTING AREAS TO BE SHEET MULCHED.
  5. FURNISH ALL NEW PLANTING AREAS WITH WOOD CHIP MULCH 3" DEEP OVER WEED BARRIER FABRIC.
  6. INSTALL ROOT BARRIER AROUND PAVING EDGE OF ALL NEW TREES PLANTED WITHIN 5' OF PAVING. DO NOT WRAP ROOT BARRIER AROUND ROOTBALL.
  7. ALL NEW PLANTING AREAS SHALL RECEIVE AUTOMATIC IRRIGATION. SEE IRRIGATION SHEETS.
  8. DO NOT PLANT NEW TREES DIRECTLY ABOVE UNDERGROUND SITE UTILITY LINES AND PIPING.

AUTHORITY APPROVAL

**Keller Mitchell & Co.**  
Landscape Architecture  
1970 Broadway, Suite 800  
Oakland, California, 94612  
T (510) 451-9987  
F (510) 452-9987  
www.kellermitchell.com



**CLPCCD - LAS POSITAS COLLEGE LANDSCAPE RENOVATION**  
3000 CAMPUS HILL DRIVE, LIVERMORE, CA 94551

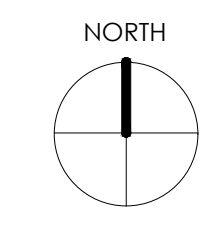


Date	Issue
01/19/2023	BID SET

DRAWING TITLE  
**PLANTING PLAN**

SHEET NO.  
**L-601**

PROJECT NO.  
22202  
SCALE  
1/8" = 1'-0"  
DRAWN BY  
SH



1/8" = 1'-0"

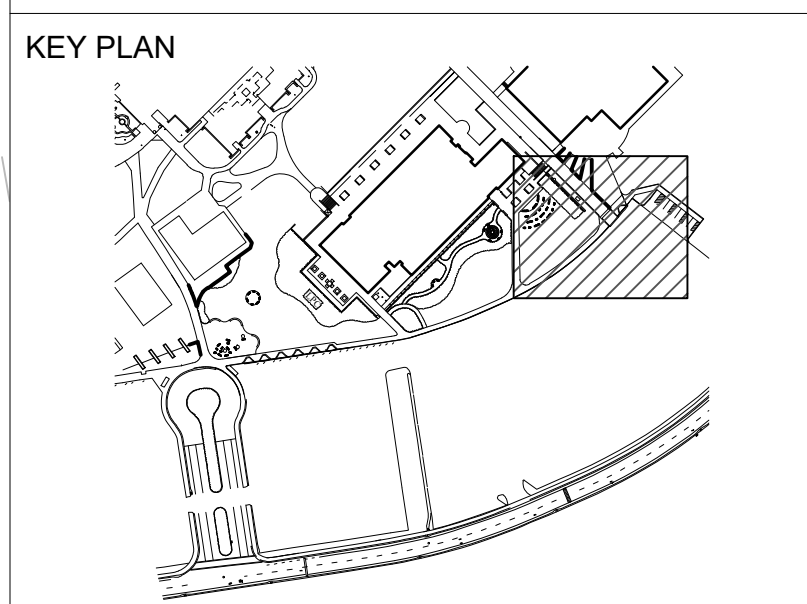




AUTHORITY APPROVAL

**Keller Mitchell & Co.**  
Landscape Architecture

1970 Broadway, Suite 800  
Oakland, California, 94612  
T (510) 451-9987  
F (510) 452-9987  
www.kellermitchell.com



**CLPCCD - LAS POSITAS COLLEGE**  
**LANDSCAPE RENOVATION**  
3000 CAMPUS HILL DRIVE,  
LIVERMORE, CA 94551



Date	Issue
01/19/2023	BID SET

DRAWING TITLE

**PLANTING PLAN**

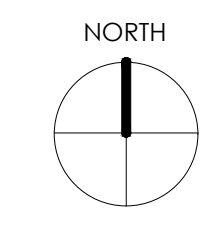
SHEET NO.

**L-603**

PROJECT NO.  
22202

SCALE  
1/8" = 1'-0"

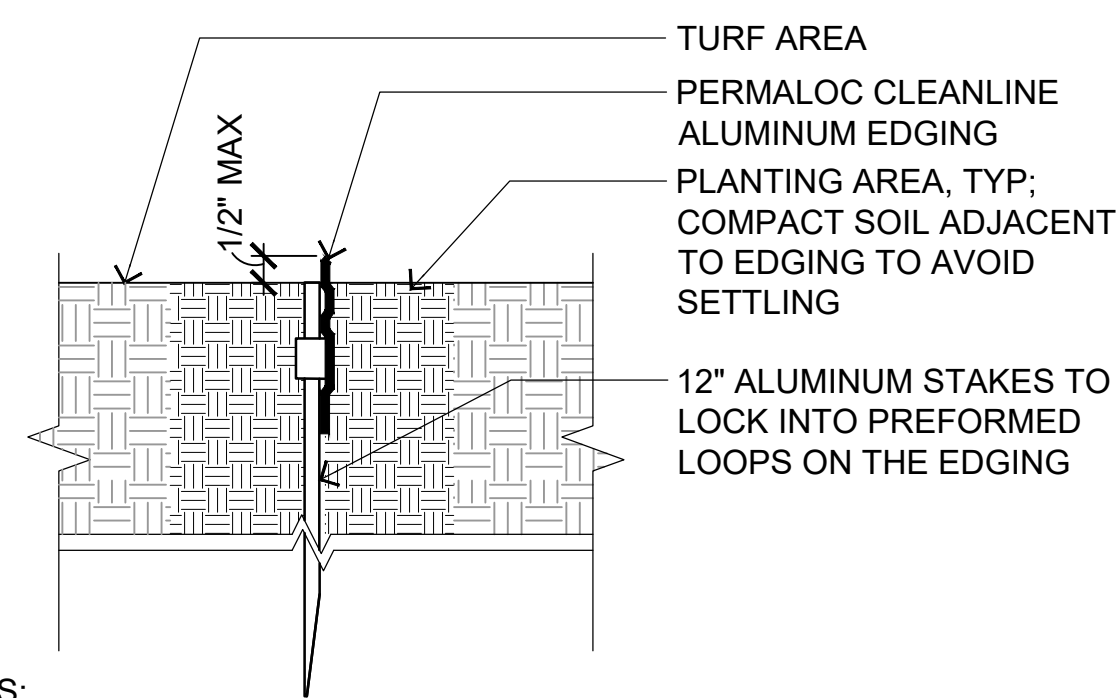
DRAWN BY  
SH



1/8" = 1'-0"

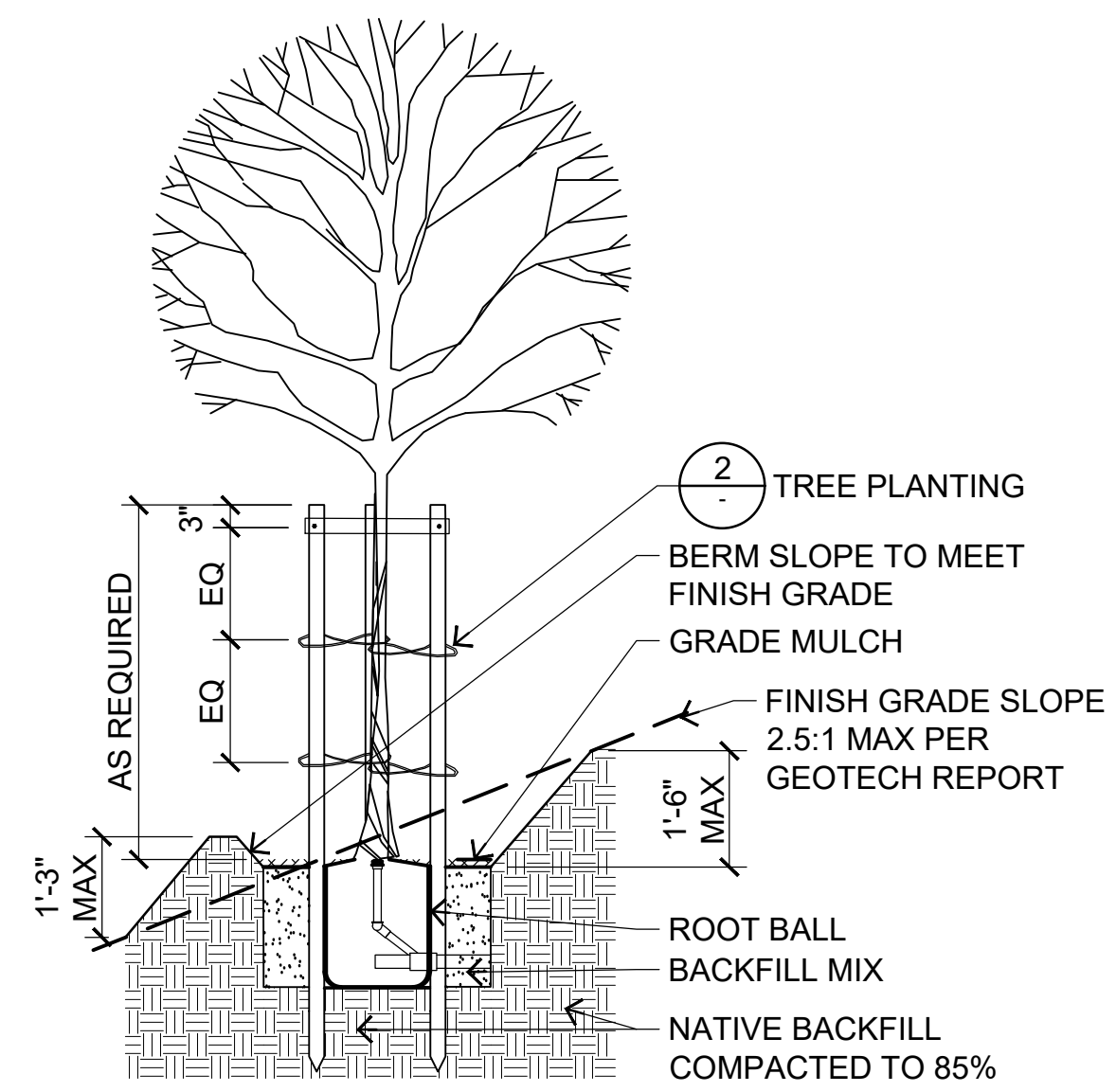
PLANT SCHEDULE										
TREES	CODE	BOTANICAL NAME	COMMON NAME	SIZE	SPACING	WATER USE	CA NATIVE	INVASIVE		QTY
	JAC MIM	JACARANDA MIMOSIFOLIA	JACARANDA	24" BOX		M	N			4
	NYS SYL	NYSSA SYLVATICA	TUPELO	24" BOX		M	N			13
	PAR DES	PARKINSONIA X 'DESERT MUSEUM'	DESERT MUSEUM PALO VERDE	24" BOX			Y			8
	PIS CHI	PISTACIA CHINENSIS	CHINESE PISTACHE	15 GAL.	PER PLAN	L	N	Y		4
	ULM DRA	ULMUS PARVIFOLIA 'DRAKE'	DRAKE CHINESE ELM	24"		L	N			13
SHRUBS	CODE	BOTANICAL NAME	COMMON NAME	SIZE	SPACING	WATER USE	NATIVE	INVASIVE	SPACING	QTY
	ARC MIS	ARCTOSTAPHYLOS X 'PACIFIC MIST'	PACIFIC MIST MANZANITA	5 GAL	6' O.C.	L	Y	N	72" o.c.	38
	BAC PEA	BACCHARIS PILULARIS 'TWIN PEAKS'	TWIN PEAKS COYOTE BRUSH	5 GAL	8' O.C.	L	Y	N	96" o.c.	105
	CEA CON	CEANOTHUS X 'CONCHA'	CONCHA WILD LILAC	5 GAL	7' O.C.	L	Y	N	84" o.c.	25
	WES MUN	WESTRINGIA FRUTICOSA 'WES05'	MUNDI™ COAST ROSEMARY	5 GAL	6' O.C.	L	N	N	72" o.c.	200
GRASSES	CODE	BOTANICAL NAME	COMMON NAME	SIZE	SPACING	WATER USE	NATIVE	INVASIVE	SPACING	QTY
	FES ELJ	FESTUCA GLAUCA 'ELIJAH BLUE'	ELIJAH BLUE FESCUE	1 GAL	2' O.C.	L	N	N	24" o.c.	171
PERENNIALS	CODE	BOTANICAL NAME	COMMON NAME	SIZE	SPACING	WATER USE	NATIVE	INVASIVE	SPACING	QTY
	EPI EVE	EPILOBIUM CANUM LATIFOLIUM 'EVERETT'S CHOICE'	EVERETT'S CALIFORNIA FUCHSIA	5 GAL	3' O.C.	L	Y	N	36" o.c.	29
	HEM STE	HEMEROCALLIS X 'STELLA DE ORO'	STELLA DE ORO DAYLILY	5 GAL	4' O.C.	M	N	N	48" o.c.	176
	PEN BLU	PENSTEMON HETEROPHYLLUS 'BLUE SPRINGS'	BLUE SPRINGS PENSTEMON	5 GAL	2' O.C.	M	Y	N	24" o.c.	46
	PEN PAR	PENSTEMON PARRYI	PARRY'S BEARDTONGUE	5 GAL	3' O.C.	M	N	N	36" o.c.	38
	SAL BAR	SALVIA LEUCANTHA 'SANTA BARBARA'	SANTA BARBARA MEXICAN BUSH SAGE	5 GAL	5' O.C.	L	N	N	60" o.c.	101
	VER LIL	VERBENA LILACINA 'DE LA MINA'	DE LA MINA LILAC VERBENA	5 GAL	3' O.C.	L	Y	N	36" o.c.	16
SOD/SEED	CODE	BOTANICAL NAME	COMMON NAME	SIZE	SPACING	WATER USE	NATIVE	INVASIVE	SPACING	QTY
	TUR BLU	TURF SOD BLUEGRASS	DELTA BLUEGRASS 90/10 TALL FESCUE	SOD						36,188 SF

**Keller Mitchell & Co.**  
Landscape Architecture  
1970 Broadway, Suite 800  
Oakland, California, 94612  
T (510) 451-9987  
F (510) 452-9987  
www.kellermitchell.com



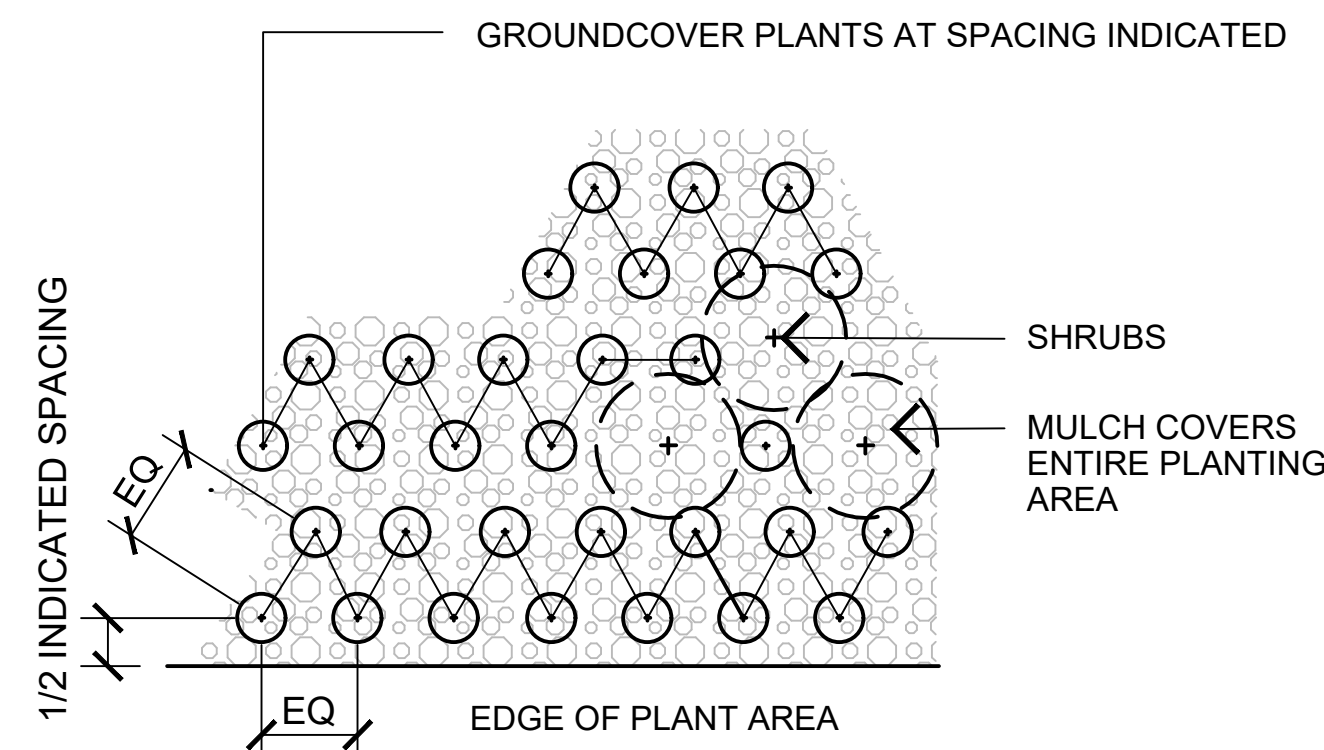
NOTES:  
1. 8'-0" SECTIONS CONNECTED WITH (3) 12" ALUMINUM STAKES  
2. CORNERS: CUT BASE EDGING UP HALFWAY AND FORM A CONTINUOUS CORNER

**7 METAL HEADER AT PLANTING**  
SCALE: N.T.S.

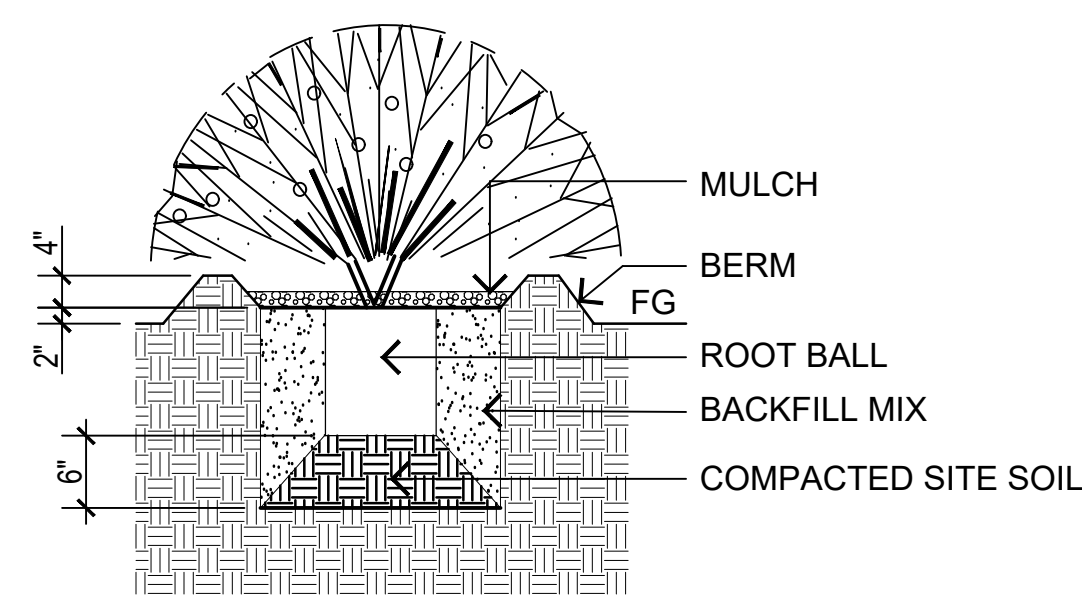


NOTES:  
1. SET ROOTBALL CROWN 2" ABOVE FINISH GRADE.  
2. SCARIFY ROOTBALL AND PIT SIDES.  
3. WHERE CONSTRUCTION COMPACTION HAS OCCURRED, RIP OR SCARIFY TOP 18" OF SUBGRADE IN A 10' DIAMETER CIRCLE MINIMUM AT EACH TREE LOCATION.

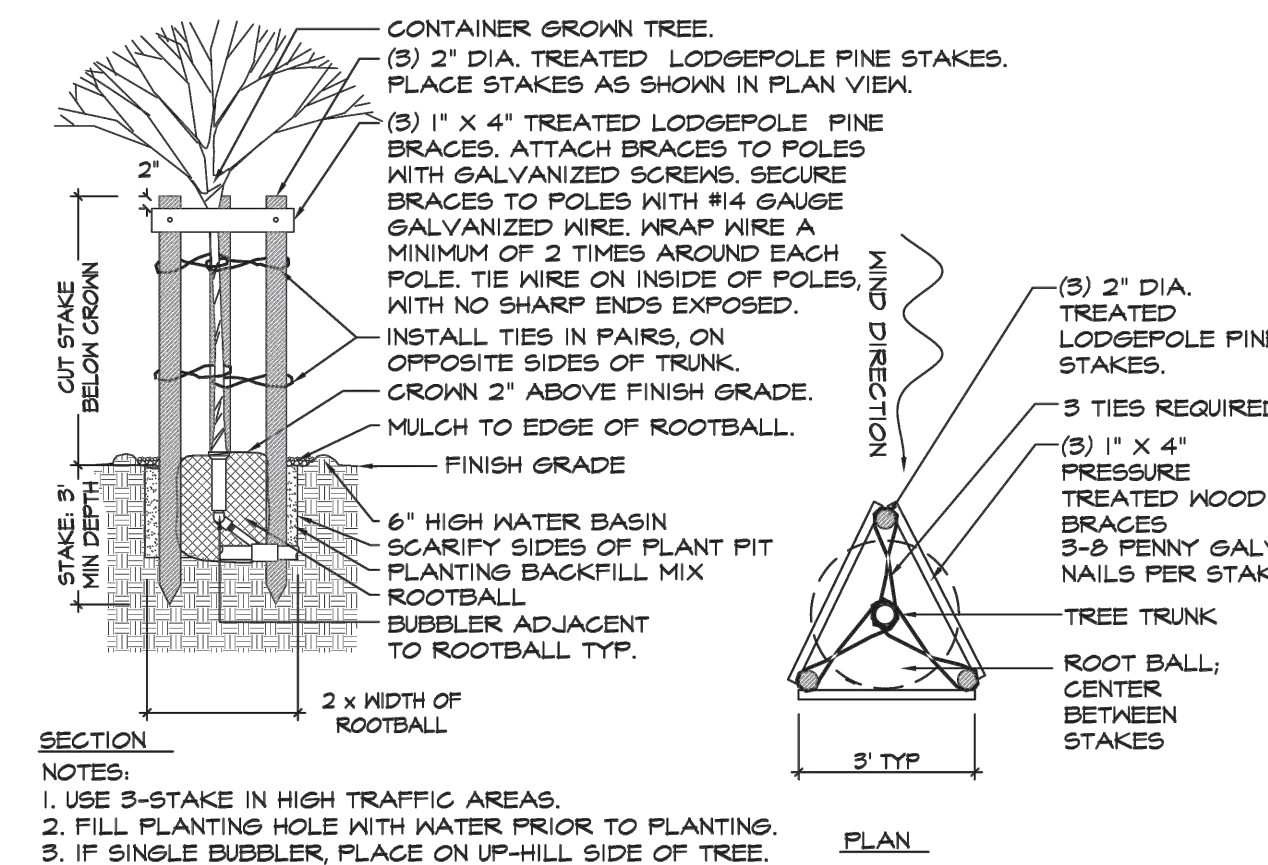
**9 TREE PLANTING IN SLOPE**  
SCALE: 1/2" = 1'-0"



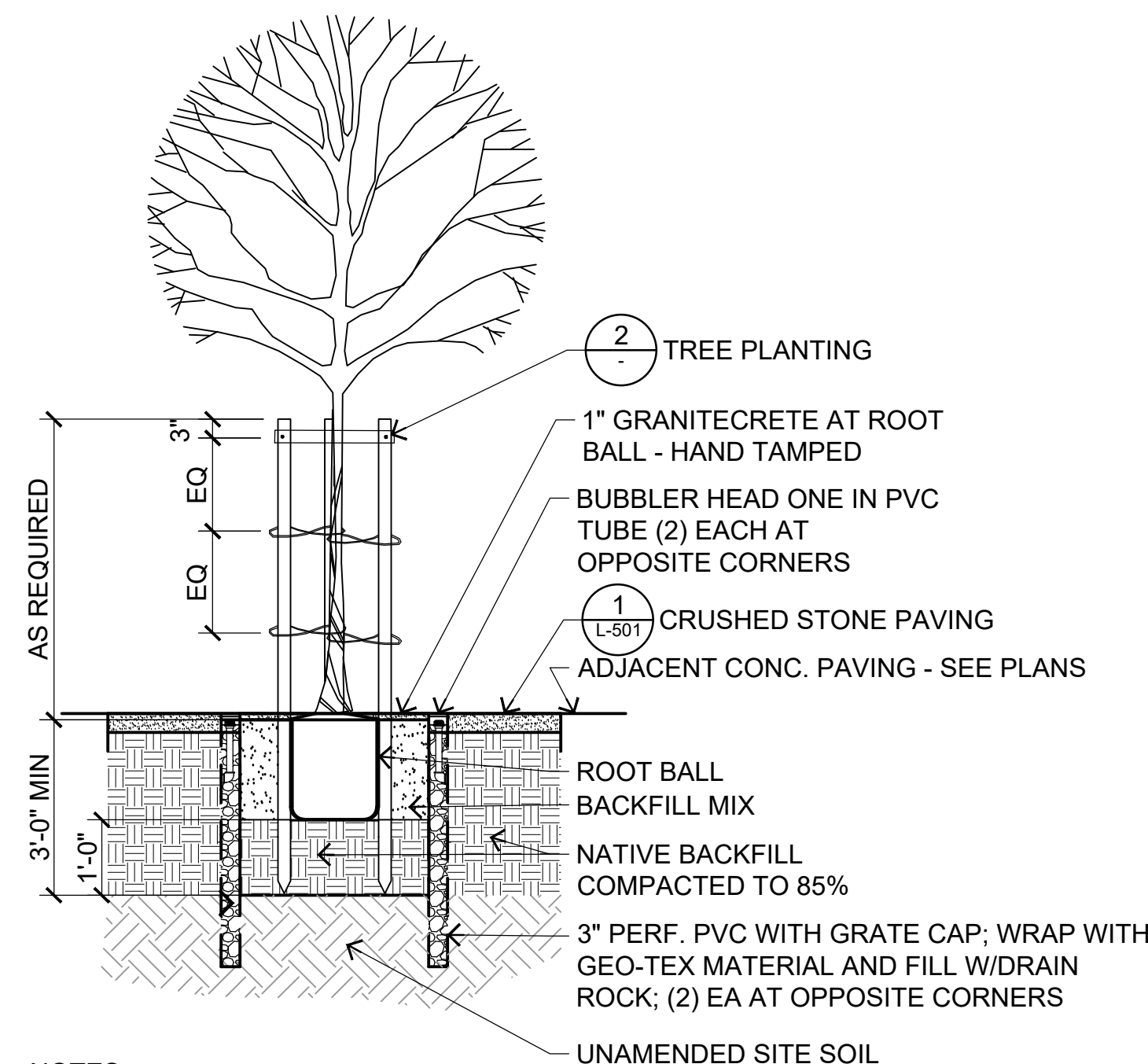
**5 GROUNDCOVER SPACING**  
SCALE: N.T.S.



**4 SHRUB PLANTING**  
SCALE: N.T.S.

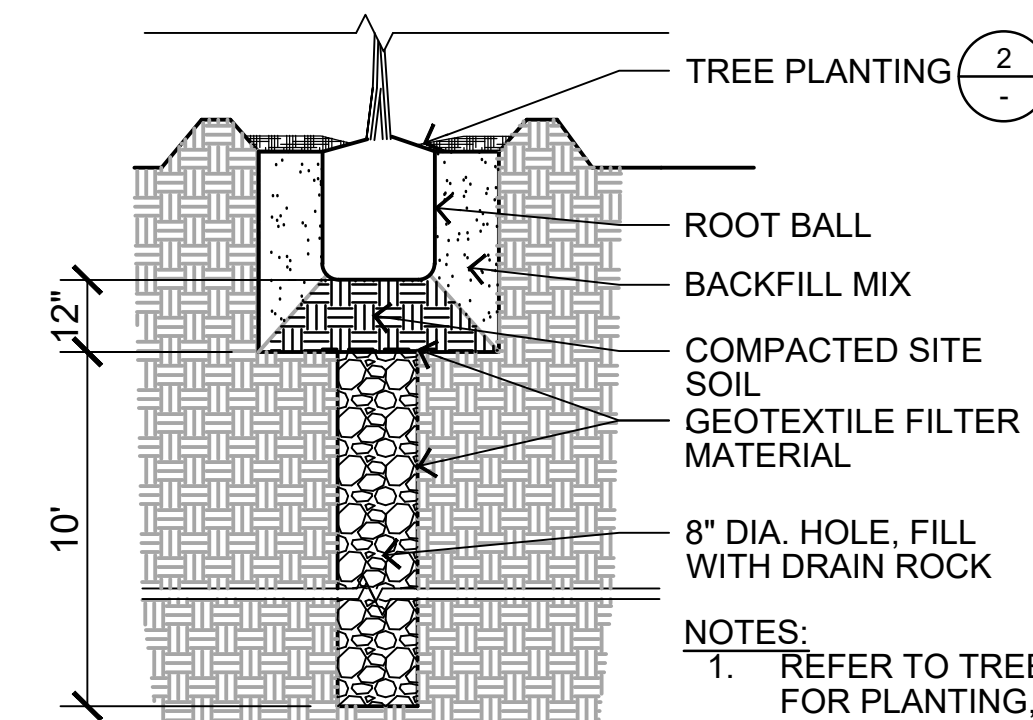


**2 TREE PLANTING**  
SCALE: N.T.S.

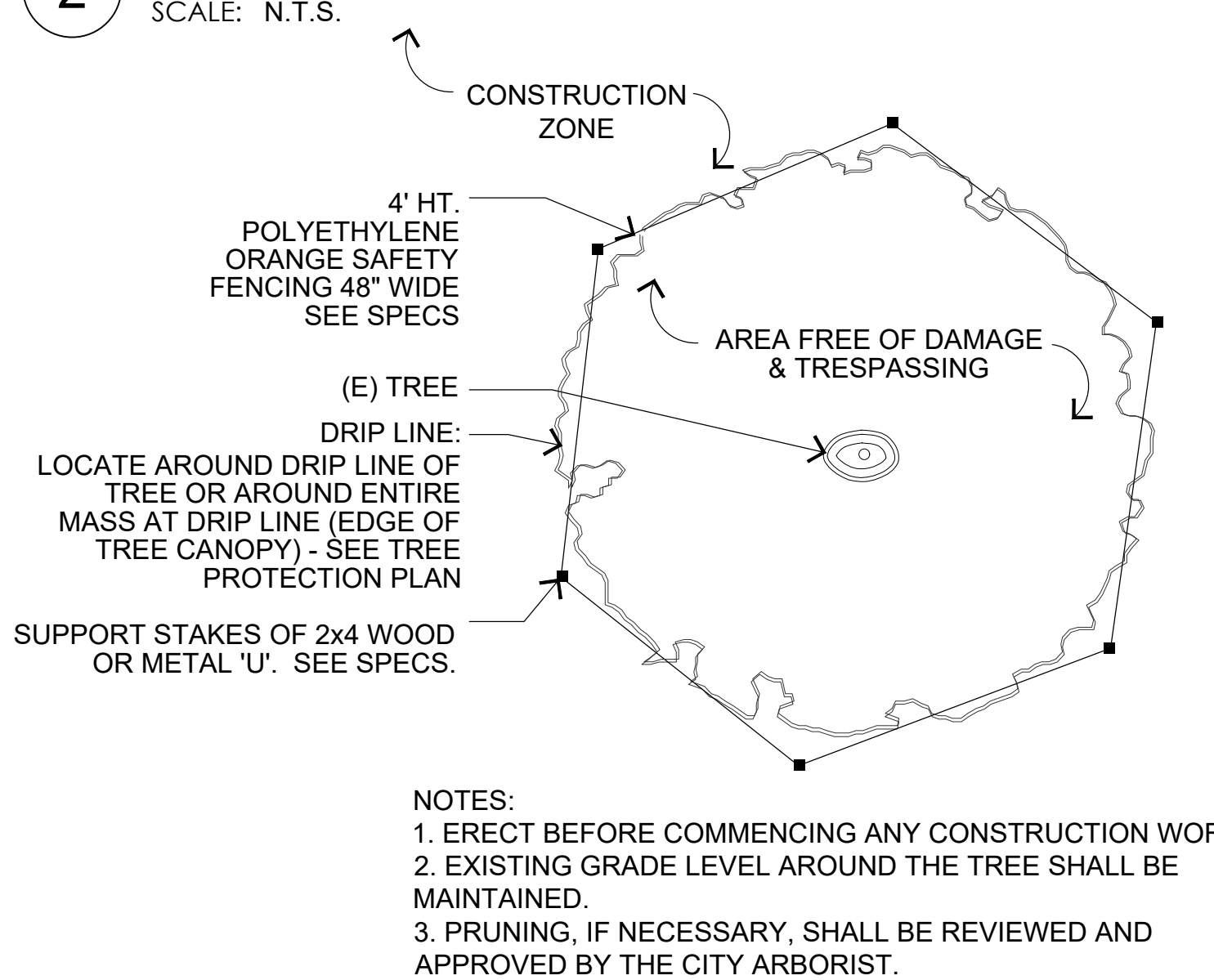


NOTES:  
1. SET ROOTBALL CROWN 2" ABOVE FINISH GRADE.  
2. SCARIFY ROOTBALL AND PIT SIDES.  
3. WHERE CONSTRUCTION COMPACTION HAS OCCURRED, RIP OR SCARIFY TOP 18" OF SUBGRADE IN A 10' DIAMETER CIRCLE MINIMUM AT EACH TREE LOCATION.

**8 TREE PLANTING IN GRANITECRETE**  
SCALE: 1/2" = 1'-0"



**3 TREE DRAINAGE**  
SCALE: N.T.S.



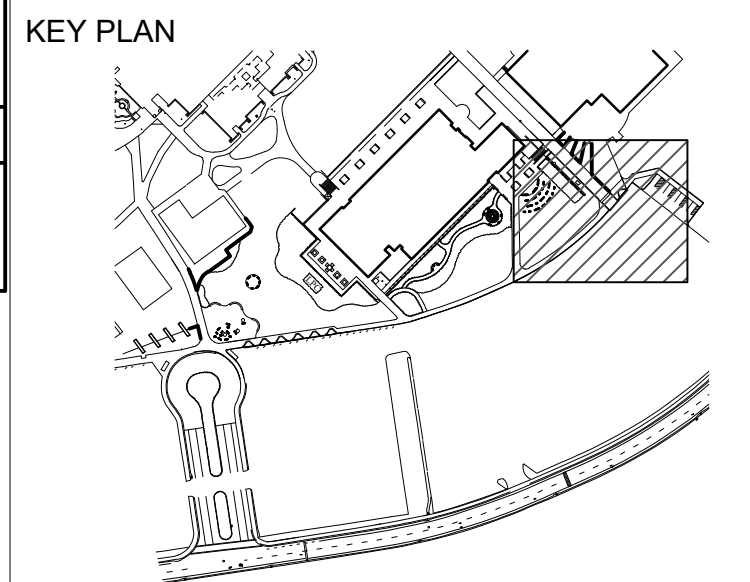
**1 TREE PROTECTION**  
SCALE: N.T.S.

MOST PROPOSED PLANT SPECIES ARE CLASSIFIED AS HAVING LOW WATER NEEDS IN THIS REGION, AND WILL REQUIRE LITTLE IRRIGATION ONCE ESTABLISHED. FOUR PLANT SPECIES, ALL IN SMALL QUANTITIES, HAVE A MODERATE NEED FOR WATERING. PLANTS HAVE BEEN SELECTED BASED ON THEIR CLIMACTIC ORIGIN, MOST ARE NATIVE TO MEDITERRANEAN CLIMATE REGIONS, AND ALL ARE WELL ADAPTED TO LOCAL CLIMATE CONDITIONS.

WATER REQUIREMENTS ARE BASED ON WUCOLS IV (WATER USE CLASSIFICATIONS OF LANDSCAPE SPECIES), JANUARY 2014  
H = HIGH  
VL = VERY LOW  
L = LOW  
M = MEDIUM

**SCHEDULE OF PLANTING HOLE SIZES**

CONTAINER SIZE	HOLE WIDTH	HOLE DEPTH
48" BOX	TREE WELL WIDTH	12" BELOW ROOT BALL
36" BOX	6'-0"	12" BELOW ROOT BALL
24" BOX	5'-0"	12" BELOW ROOT BALL
15 GAL	3'-0"	12" BELOW ROOT BALL
5 GAL	2'-0"	6" BELOW ROOT BALL
1 GAL	1'-4"	6" BELOW ROOT BALL



KEY PLAN

**CLPCCD - LAS POSITAS COLLEGE LANDSCAPE RENOVATION**  
3000 CAMPUS HILL DRIVE, LIVERMORE, CA 94551



Date	Issue
01/19/2023	BID SET

DRAWING TITLE  
**PLANTING DETAILS & PLANT LIST**

SHEET NO.

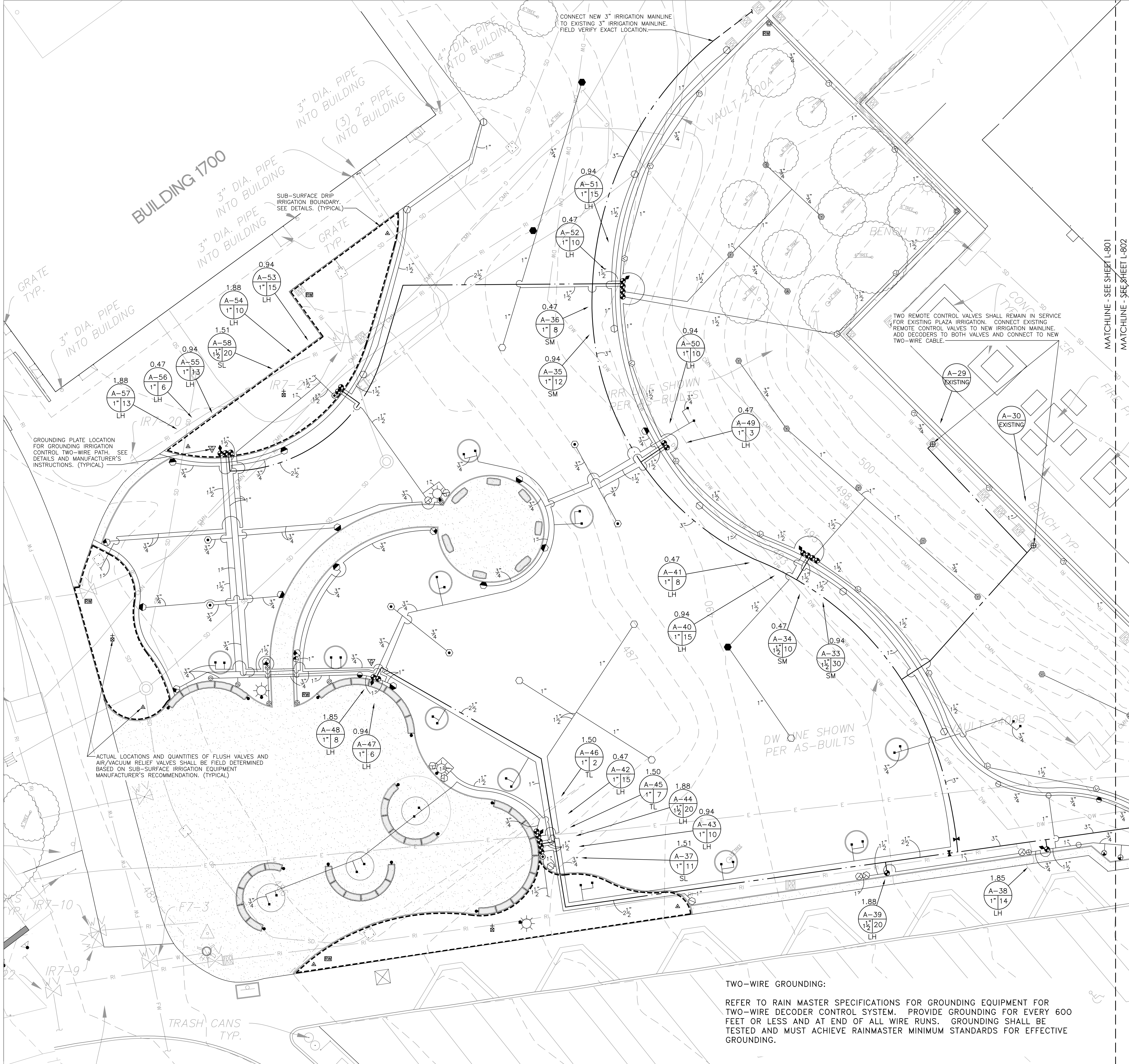
**L-701**

PROJECT NO.  
22202

SCALE  
AS NOTED

DRAWN BY  
SH





**COMMISSIONING AND MANAGEMENT OF SUB-SURFACE DRIP IRRIGATION SYSTEMS**

1. PRIOR TO PLANTING, CONTRACTOR SHALL PREPARE SOIL FOR PLANTING BY HAND WATERING TO BRING SOIL MOISTURE CONTENT UP TO AN IDEAL GROWING CONDITION THROUGHOUT THE INTENDED ROOT ZONE. OPERATE SUB-SURFACE DRIP SYSTEM AS NECESSARY TO MAINTAIN MOISTURE LEVEL IN SOIL. DO NOT LET SOIL DRY OUT. MOISTURE DEPLETION SHOULD NOT EXCEED 20% DEPLETION (80% OF DESIRED MOISTURE CONTENT REMAINS). CONTRACTOR SHALL MONITOR MOISTURE CONTENT TO ENSURE DESIRED MOISTURE CONTENT IS MAINTAINED WITHOUT OVER-SATURATION. USE CARE TO NOT DAMAGE SUB-SURFACE DRIP TUBING WHEN PROBING SOIL FOR MOISTURE CONTENT TESTING.
2. INSTALL TUBING ACCORDING TO SPACING SPECIFIED IN THE DRAWINGS AND DETAILS. DRIP TUBING MUST REMAIN AS CLOSE AS POSSIBLE TO THE SPACING IDENTIFIED IN THE DRAWINGS. THE GRID OF EMITTERS ARE INTENDED TO IRRIGATE THE ENTIRE PLANTED AREA (NOT INDIVIDUAL PLANTS). LIKEWISE, DO NOT MOVE PLANTS FROM THEIR DESIGNED SPACING TO BE CLOSER TO AN EMITTER. WHEN PROPERLY MANAGED, THE DRIP SYSTEM WILL PROVIDE WATER TO THE ENTIRE PLANTED AREA, CREATING AN INVITING CONDITION FOR THE ROOTS TO GROW AND THE PLANTS TO THRIVE.

AUTHORITY APPROVAL

**Keller Mitchell & Co.**  
Landscape Architecture  
1970 Broadway, Suite 800  
Oakland, California, 94612  
T (510) 451-9987  
F (510) 452-9987  
www.kellermitchell.com

KEY PLAN

**CLPCCD - LAS POSITAS COLLEGE LANDSCAPE RENOVATION**  
3000 CAMPUS HILL DRIVE, LIVERMORE, CA 94551



Date	Issue
01/19/2023	BID SET

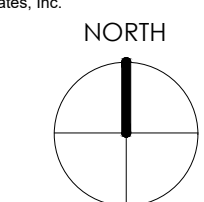
DRAWING TITLE

**IRRIGATION PLAN**

SHEET NO.

**L-801**

**DICKSON & ASSOCIATES, INC.**  
LANDSCAPE IRRIGATION  
(530) 547-5515 www.dicksoninc.net  
P.O. BOX 415  
PALO CEDRO, CALIFORNIA 96073  
© Dickson & Associates, Inc.



1/8" = 1'-0"

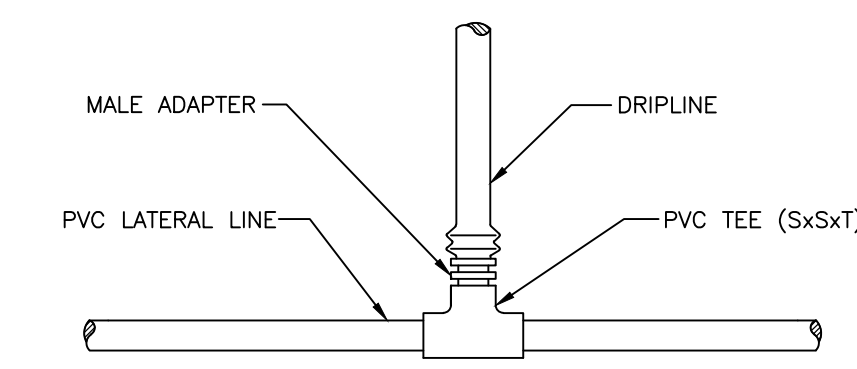
**TWO-WIRE GROUNDING:**  
REFER TO RAIN MASTER SPECIFICATIONS FOR GROUNDING EQUIPMENT FOR TWO-WIRE DECODER CONTROL SYSTEM. PROVIDE GROUNDING FOR EVERY 600 FEET OR LESS AND AT END OF ALL WIRE RUNS. GROUNDING SHALL BE TESTED AND MUST ACHIEVE RAINMASTER MINIMUM STANDARDS FOR EFFECTIVE GROUNDING.



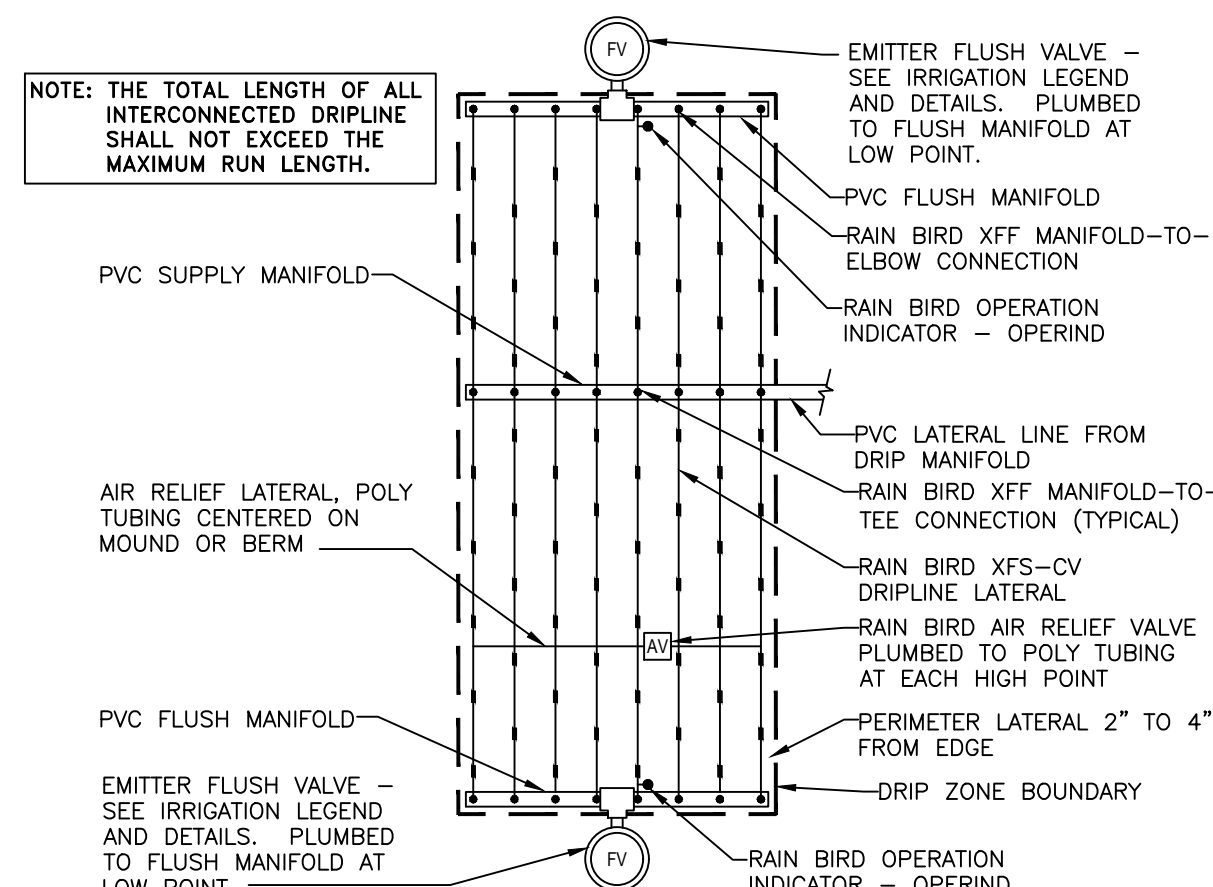




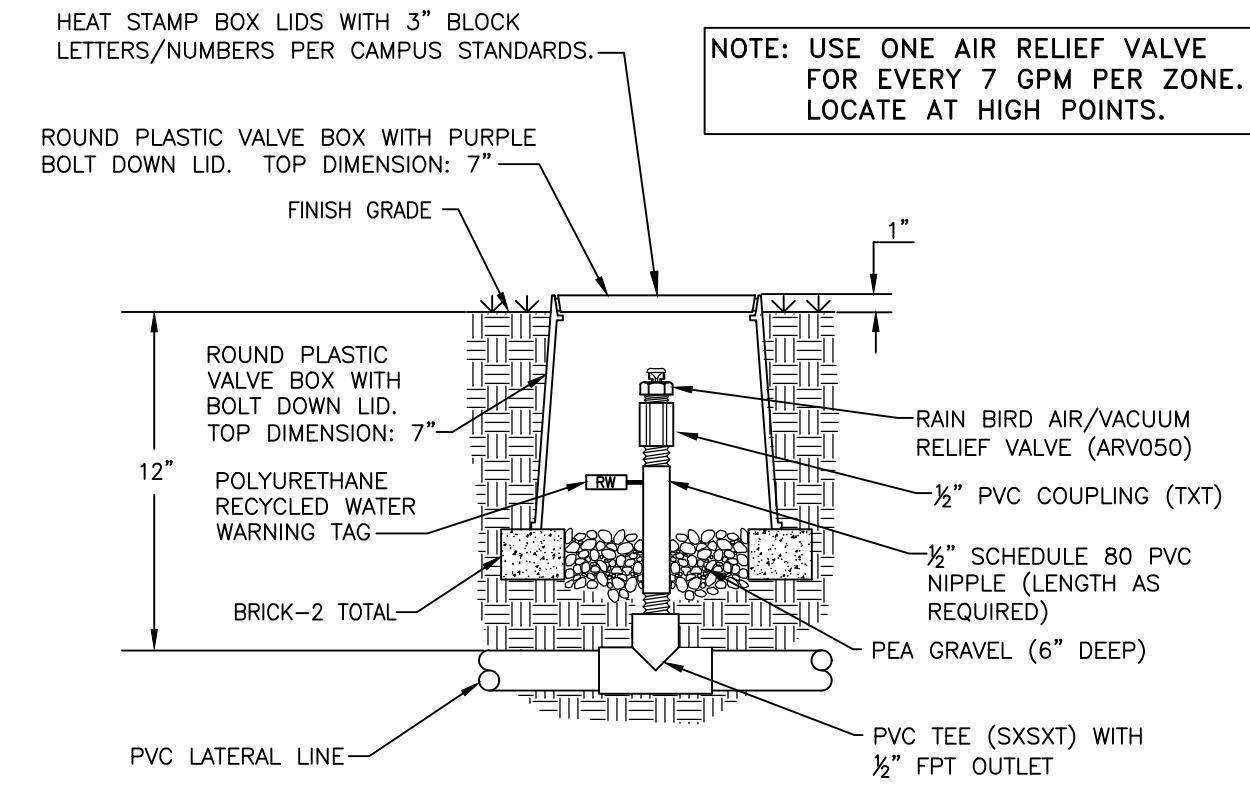




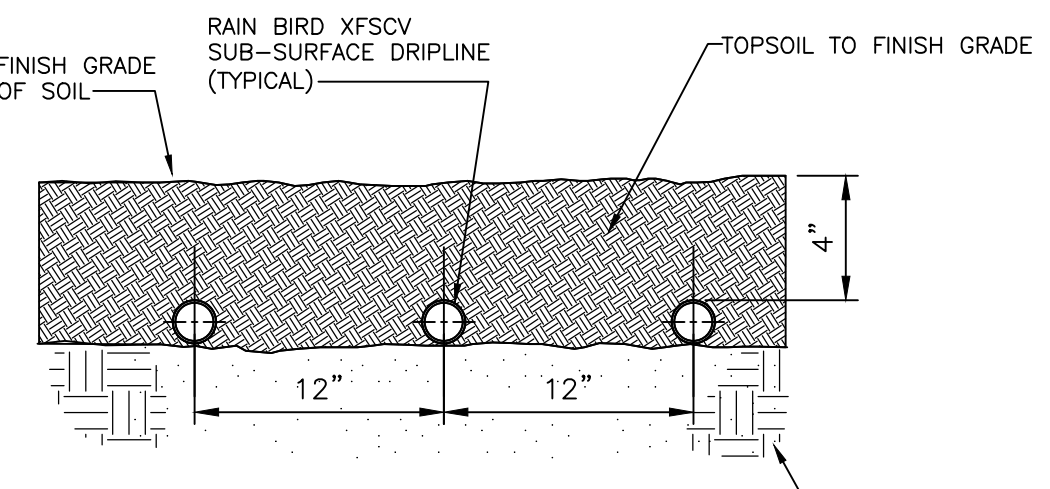
11 DRIPLINE TO PVC CONNECTION NOT TO SCALE



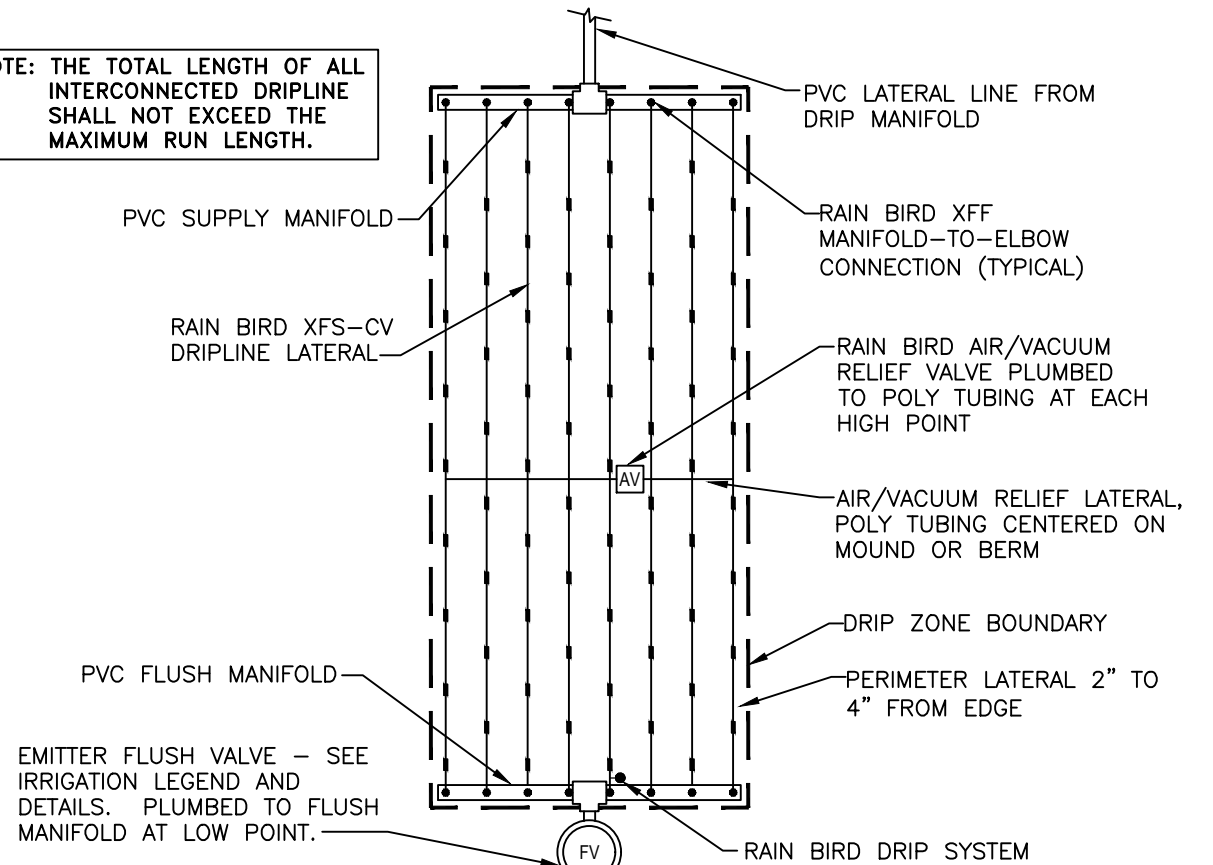
6 CENTER FEED LAYOUT FOR SUB-SURFACE DRIP NOT TO SCALE



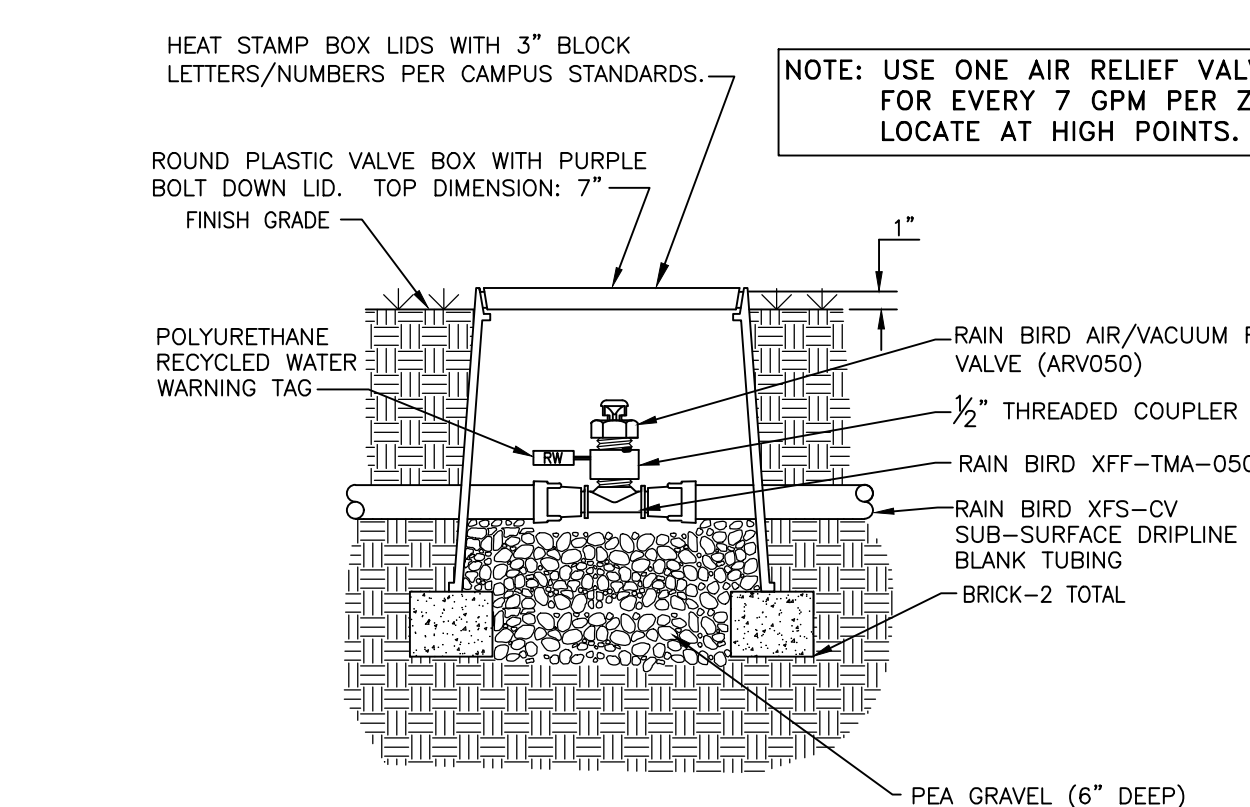
1 AIR/VACUUM RELIEF VALVE AT PVC LATERAL NOT TO SCALE



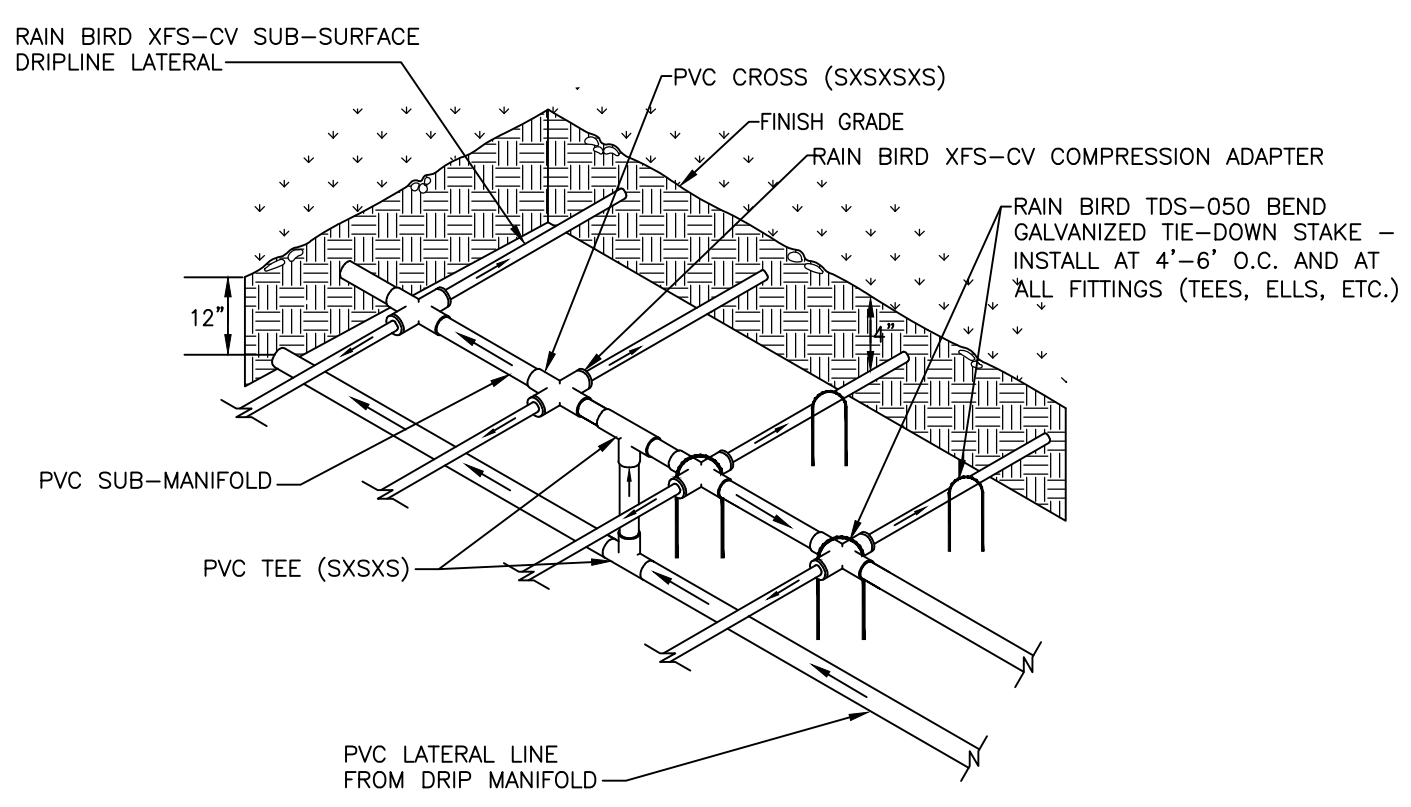
12 DRIPLINE SUB-SURFACE INSTALLATION 12\"/>



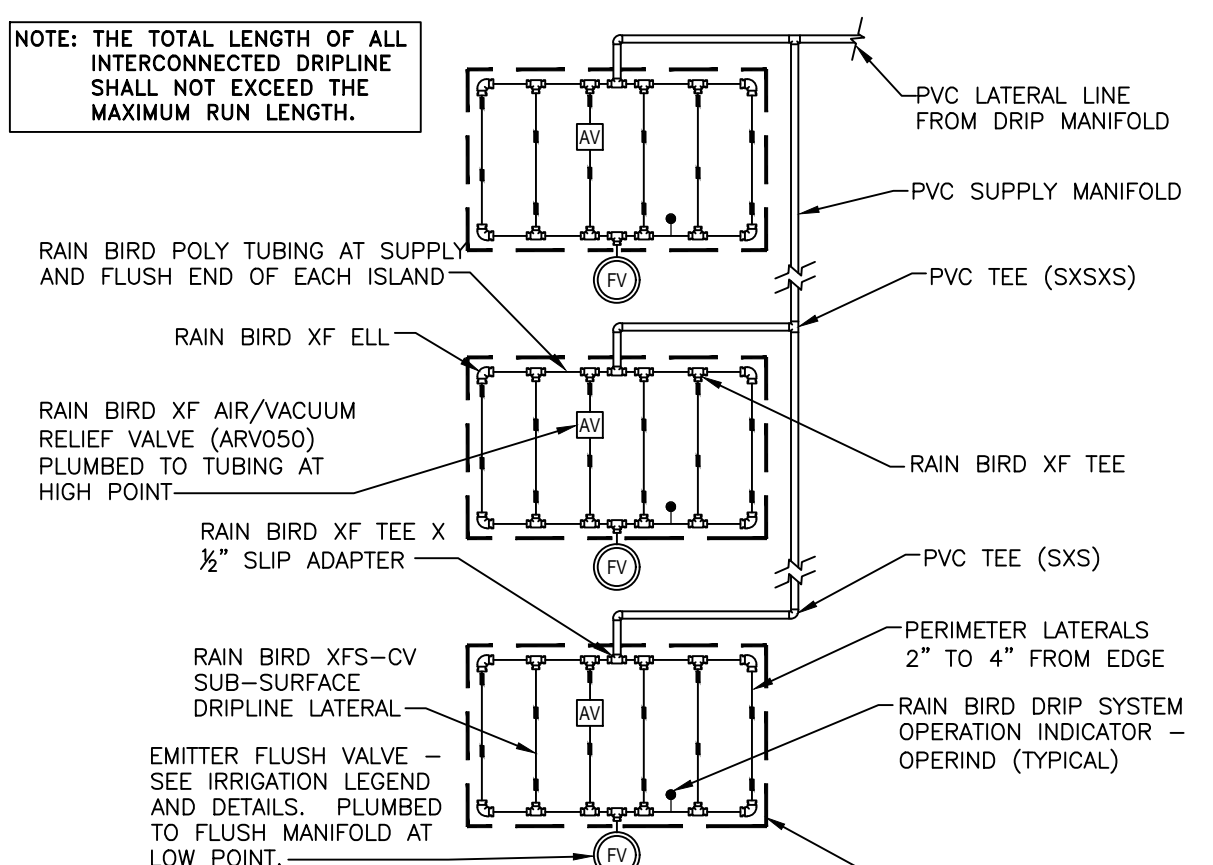
7 END FEED LAYOUT FOR SUB-SURFACE DRIP NOT TO SCALE



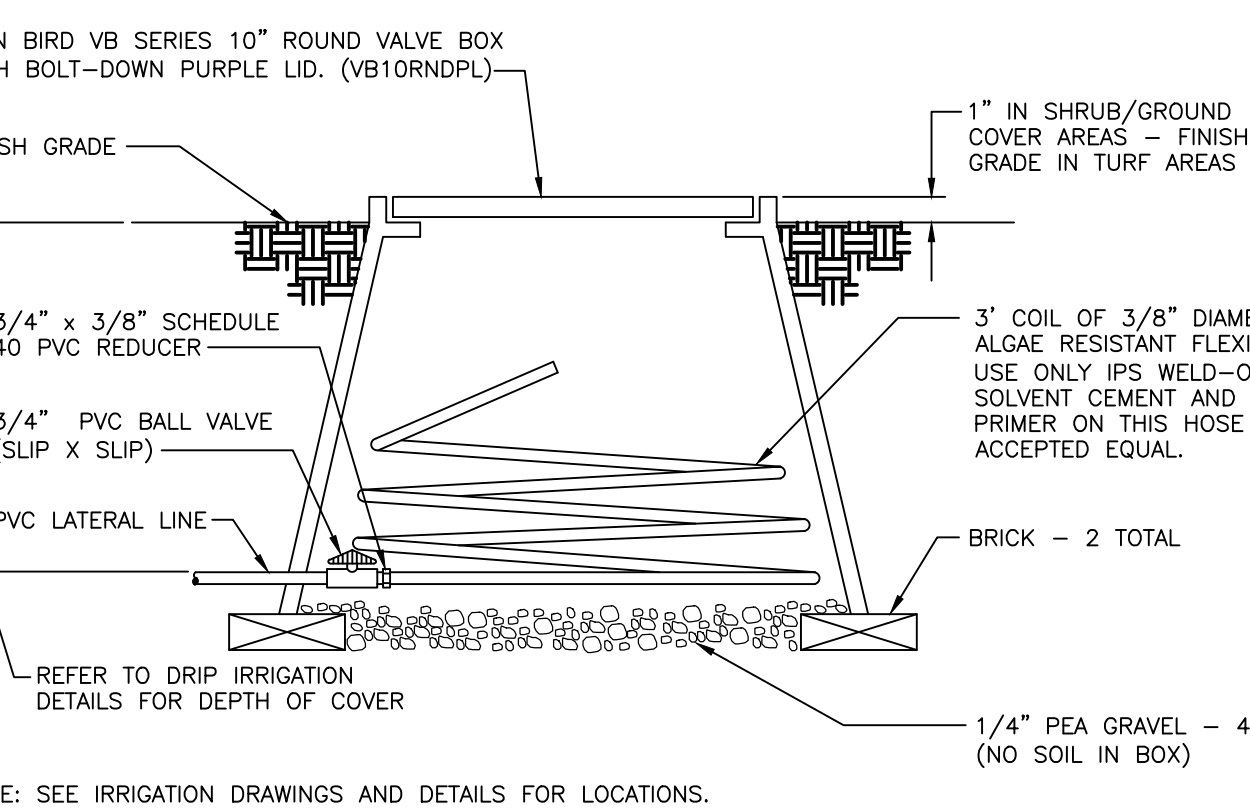
2 AIR/VACUUM RELIEF VALVE AT DRIPLINE PIPE NOT TO SCALE



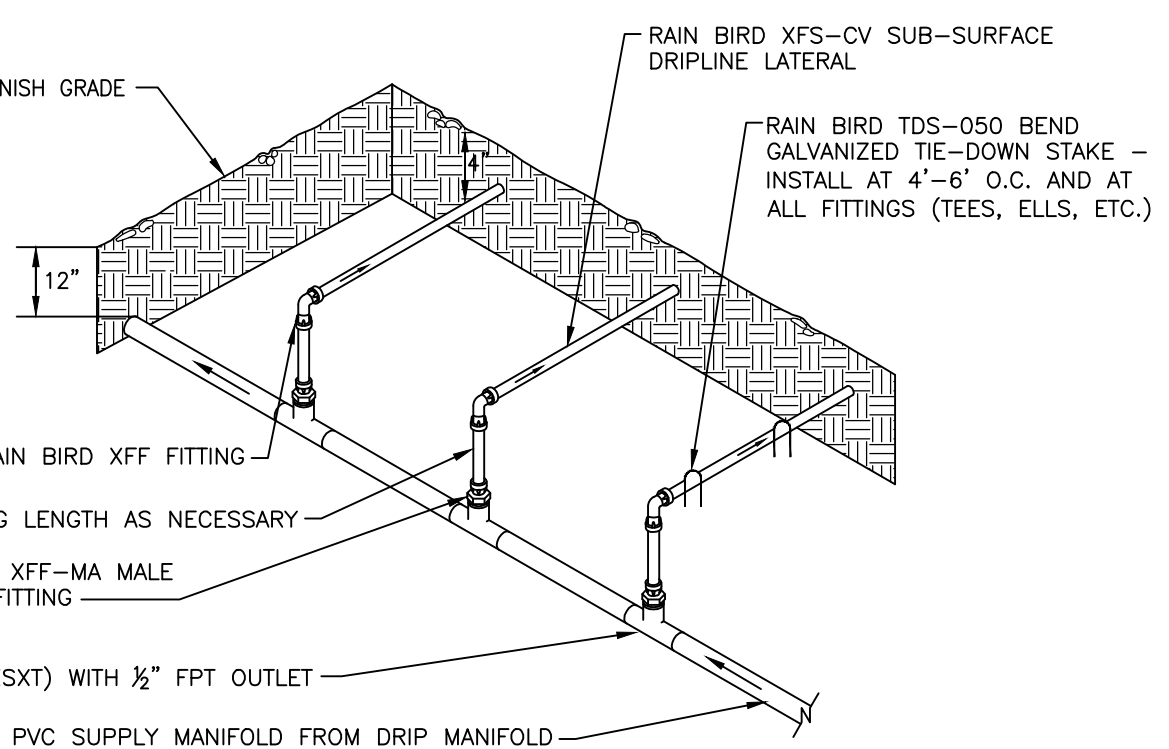
13 SUB-MANIFOLD CENTER FEED NOT TO SCALE



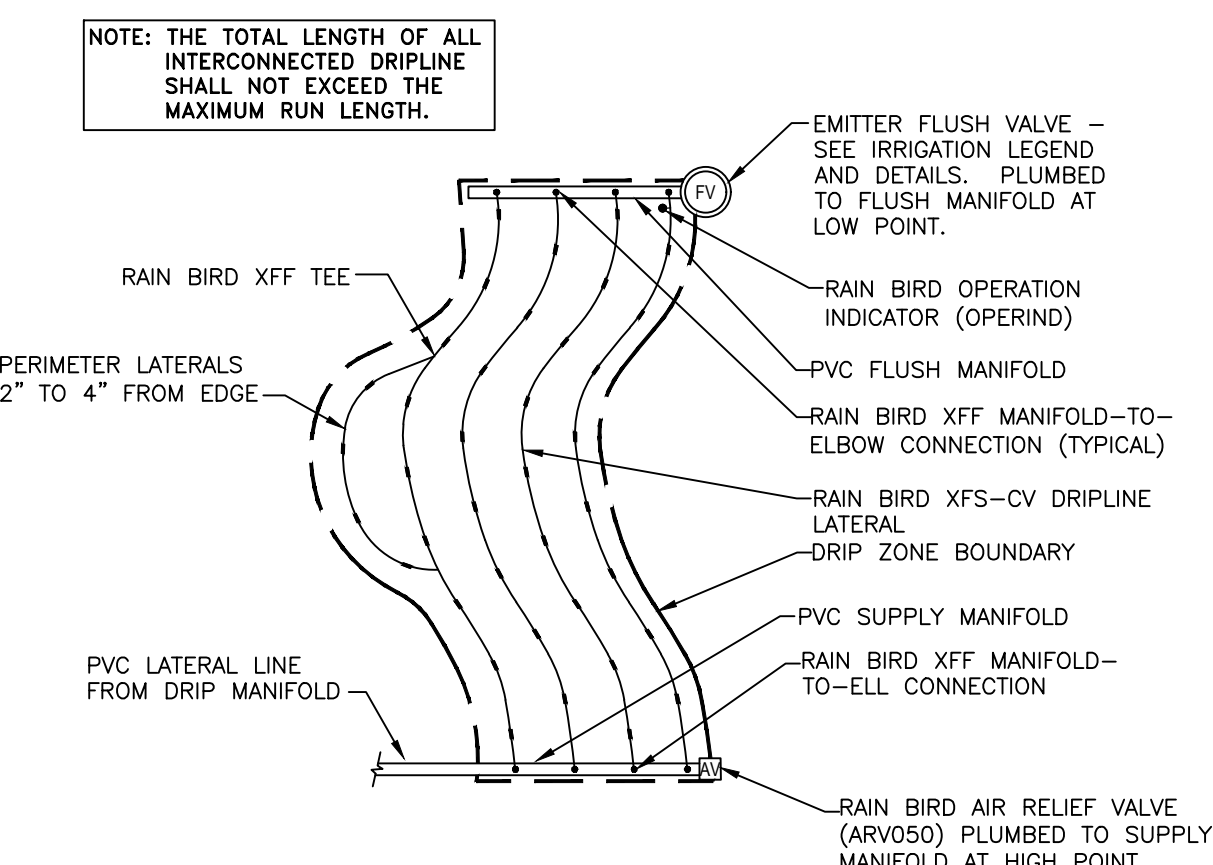
8 ISLAND LAYOUT FOR SUB-SURFACE DRIP NOT TO SCALE



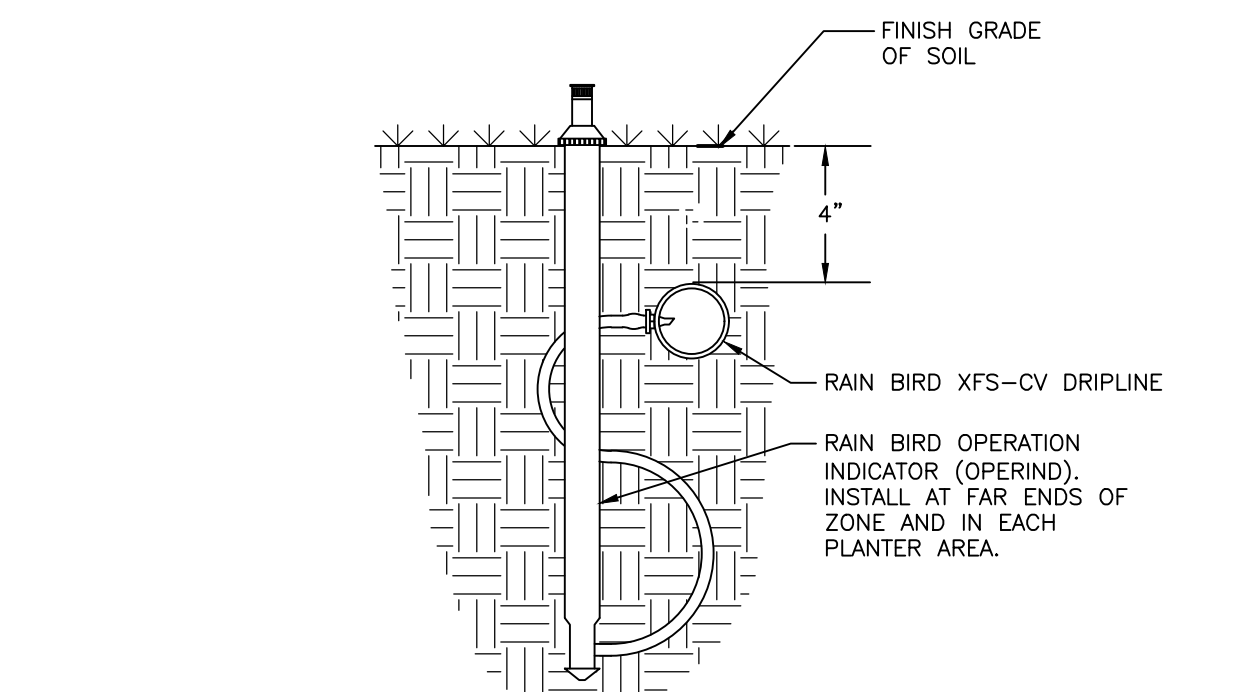
3 DRIPLINE FLUSH VALVE NOT TO SCALE



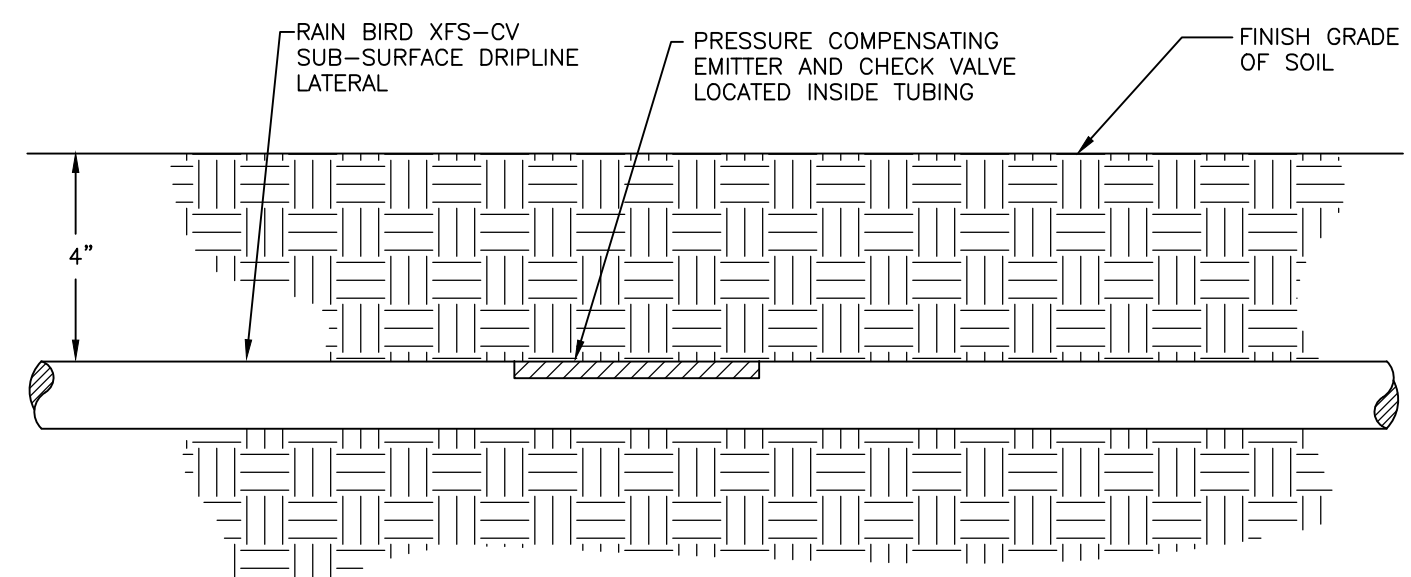
14 MANIFOLD END FEED NOT TO SCALE



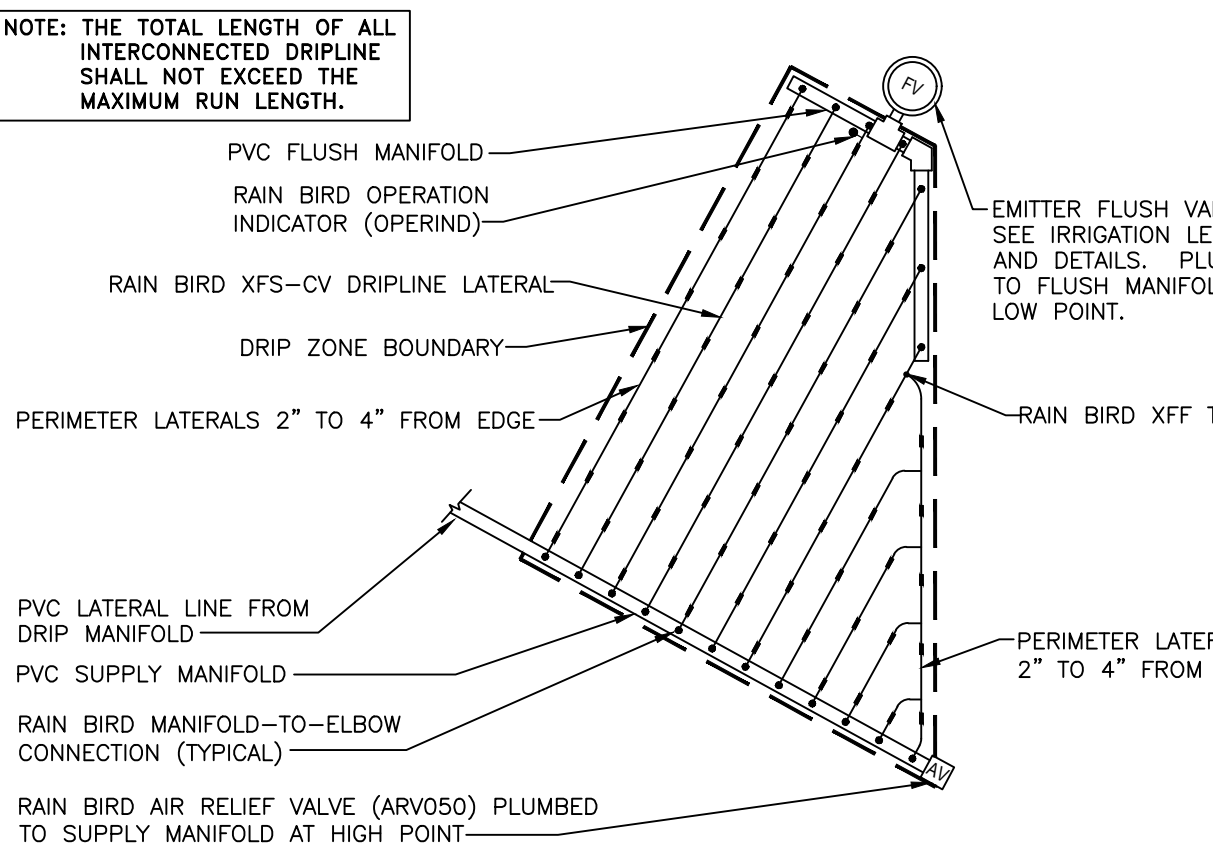
9 ODD CURVES LAYOUT FOR SUB-SURFACE DRIP NOT TO SCALE



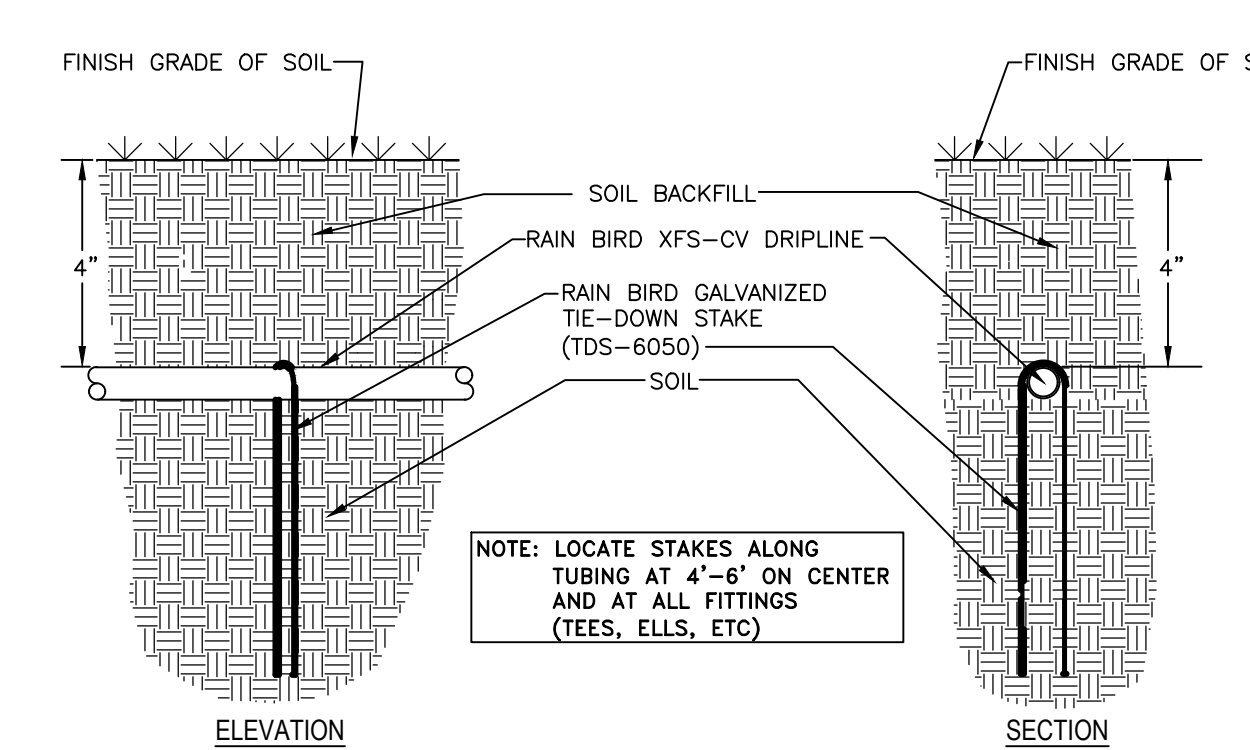
4 POP-UP OPERATION INDICATOR NOT TO SCALE



15 DRIPLINE DEPTH NOT TO SCALE



10 TRIANGULAR LAYOUT FOR SUB-SURFACE DRIP NOT TO SCALE



5 GALVANIZED TIE-DOWN STAKE NOT TO SCALE

Keller Mitchell & Co. Landscape Architecture  
1970 Broadway, Suite 800  
Oakland, California, 94612  
T (510) 451-9987  
F (510) 452-9987  
www.kellermitchell.com

KEY PLAN

CLPCCD - LAS POSITAS COLLEGE LANDSCAPE RENOVATION  
3000 CAMPUS HILL DRIVE, LIVERMORE, CA 94551



Date	Issue
01/19/2023	BID SET

DRAWING TITLE  
IRRIGATION DETAILS

SHEET NO.  
L-902

PROJECT NO. 22202  
SCALE NTS  
DRAWN BY SH

DICKSON & ASSOCIATES, INC.  
LANDSCAPE IRRIGATION  
(830) 547-8518 www.dicksoninc.net  
P.O. BOX 419  
PALO CEDRO, CALIFORNIA 96073  
© Dickson & Associates, Inc.

**IRRIGATION WATERING SCHEDULES**

POP-UP FULL CIRCLE (360°) ROTARY SPRINKLER IRRIGATION FOR HIGH WATER-USE TURF														
SPRINKLER MANUFACTURER		RAIN BIRD		LOCATION:					LIVERMORE, CALIFORNIA					
PRECIPITATION RATE (INCHES/HOUR):		0.47		HEAD SPACING:					VARIES					
IRRIGATION SYSTEM EFFICIENCY		0.75		HEAD FLOW:					VARIES					
PLANT FACTOR:		0.80												
YEAR 2 REDUCTION AMOUNT:		-10% OF YEAR 1 (ESTABLISHMENT) RUN TIME MINUTES												
MONTH:		JAN	FEB	MAR	APR	MAY	JUN	JUL	AUG	SEP	OCT	NOV	DEC	TOTAL
ETO PER MONTH (INCHES):		1.20	1.50	2.90	4.40	5.90	6.60	7.40	6.40	5.30	3.20	1.50	0.90	47.20
ETO PER WEEK (INCHES):		0.277	0.346	0.670	1.016	1.363	1.524	1.709	1.478	1.224	0.739	0.346	0.208	
APPLIED ETO PER WEEK (INCHES):		0.296	0.370	0.714	1.084	1.453	1.626	1.823	1.577	1.306	0.788	0.370	0.222	
MINUTES OF WATER PER WEEK:		YEAR 1	38	47	91	138	186	208	233	201	167	101	47	28
DAYS PER WEEK:		YEAR 1	1	1	2	2	2	2	2	2	1	1	1	1
MINUTES OF WATER PER DAY:		YEAR 1	38	47	46	69	93	104	116	101	83	101	47	28
CYCLES PER DAY:		YEAR 1	1	1	1	1	1	1	1	1	1	1	1	1
MINUTES PER CYCLE:		YEAR 1	38	47	46	69	93	104	116	101	83	101	47	28
		YEAR 2	34	42	41	62	83	93	105	91	75	91	42	25

POP-UP SPRAY IRRIGATION FOR HIGH WATER-USE TURF														
SPRINKLER MANUFACTURER		RAIN BIRD		LOCATION:					LIVERMORE, CALIFORNIA					
PRECIPITATION RATE (INCHES/HOUR):		1.85		HEAD SPACING:					VARIES					
IRRIGATION SYSTEM EFFICIENCY		0.75		HEAD FLOW:					VARIES					
PLANT FACTOR:		0.80												
YEAR 2 REDUCTION AMOUNT:		-10% OF YEAR 1 (ESTABLISHMENT) RUN TIME MINUTES												
MONTH:		JAN	FEB	MAR	APR	MAY	JUN	JUL	AUG	SEP	OCT	NOV	DEC	TOTAL
ETO PER MONTH (INCHES):		1.20	1.50	2.90	4.40	5.90	6.60	7.40	6.40	5.30	3.20	1.50	0.90	47.20
ETO PER WEEK (INCHES):		0.277	0.346	0.670	1.016	1.363	1.524	1.709	1.478	1.224	0.739	0.346	0.208	
APPLIED ETO PER WEEK (INCHES):		0.296	0.370	0.714	1.084	1.453	1.626	1.823	1.577	1.306	0.788	0.370	0.222	
MINUTES OF WATER PER WEEK:		YEAR 1	10	12	23	35	47	53	59	51	42	26	12	7
DAYS PER WEEK:		YEAR 1	1	1	2	2	2	2	2	2	1	1	1	1
MINUTES OF WATER PER DAY:		YEAR 1	10	12	12	18	24	26	30	26	21	26	12	7
CYCLES PER DAY:		YEAR 1	1	1	1	1	1	1	1	1	1	1	1	1
MINUTES PER CYCLE:		YEAR 1	10	12	12	18	24	26	30	26	21	26	12	7
		YEAR 2	9	11	10	16	21	24	27	23	19	23	11	6

POP-UP PART CIRCLE (180°) ROTARY SPRINKLER IRRIGATION FOR HIGH WATER-USE TURF														
SPRINKLER MANUFACTURER		RAIN BIRD		LOCATION:					LIVERMORE, CALIFORNIA					
PRECIPITATION RATE (INCHES/HOUR):		0.94		HEAD SPACING:					VARIES					
IRRIGATION SYSTEM EFFICIENCY		0.75		HEAD FLOW:					VARIES					
PLANT FACTOR:		0.80												
YEAR 2 REDUCTION AMOUNT:		-10% OF YEAR 1 (ESTABLISHMENT) RUN TIME MINUTES												
MONTH:		JAN	FEB	MAR	APR	MAY	JUN	JUL	AUG	SEP	OCT	NOV	DEC	TOTAL
ETO PER MONTH (INCHES):		1.20	1.50	2.90	4.40	5.90	6.60	7.40	6.40	5.30	3.20	1.50	0.90	47.20
ETO PER WEEK (INCHES):		0.277	0.346	0.670	1.016	1.363	1.524	1.709	1.478	1.224	0.739	0.346	0.208	
APPLIED ETO PER WEEK (INCHES):		0.296	0.370	0.714	1.084	1.453	1.626	1.823	1.577	1.306	0.788	0.370	0.222	
MINUTES OF WATER PER WEEK:		YEAR 1	19	24	46	69	93	104	116	101	83	50	24	14
DAYS PER WEEK:		YEAR 1	1	1	2	2	2	2	2	2	1	1	1	1
MINUTES OF WATER PER DAY:		YEAR 1	19	24	23	35	46	52	58	50	42	50	24	14
CYCLES PER DAY:		YEAR 1	1	1	1	1	1	1	1	1	1	1	1	1
MINUTES PER CYCLE:		YEAR 1	19	24	23	35	46	52	58	50	42	50	24	14
		YEAR 2	17	21	21	31	42	47	52	45	38	45	21	13

POP-UP FULL CIRCLE (360°) ROTARY SPRINKLER IRRIGATION FOR LOW WATER-USE SHRUBS														
SPRINKLER MANUFACTURER		RAIN BIRD		LOCATION:					LIVERMORE, CALIFORNIA					
PRECIPITATION RATE (INCHES/HOUR):		0.47		HEAD SPACING:					VARIES					
IRRIGATION SYSTEM EFFICIENCY		0.75		HEAD FLOW:					VARIES					
PLANT FACTOR:		0.30												
YEAR 2 REDUCTION AMOUNT:		-10% OF YEAR 1 (ESTABLISHMENT) RUN TIME MINUTES												
MONTH:		JAN	FEB	MAR	APR	MAY	JUN	JUL	AUG	SEP	OCT	NOV	DEC	TOTAL
ETO PER MONTH (INCHES):		1.20	1.50	2.90	4.40	5.90	6.60	7.40	6.40	5.30	3.20	1.50	0.90	47.20
ETO PER WEEK (INCHES):		0.277	0.346	0.670	1.016	1.363	1.524	1.709	1.478	1.224	0.739	0.346	0.208	
APPLIED ETO PER WEEK (INCHES):		0.111	0.139	0.268	0.406	0.545	0.610	0.684	0.591	0.490	0.296	0.139	0.083	
MINUTES OF WATER PER WEEK:		YEAR 1	14	18	34	52	70	78	87	75	63	38	18	11
DAYS PER WEEK:		YEAR 1	1	1	2	2	2	2	2	2	1	1	1	1
MINUTES OF WATER PER DAY:		YEAR 1	14	18	17	26	35	39	44	38	31	38	18	11
CYCLES PER DAY:		YEAR 1	1	1	1	1	1	1	1	1	1	1	1	1
MINUTES PER CYCLE:		YEAR 1	14	18	17	26	35	39	44	38	31	38	18	11
		YEAR 2	13	16	15	23	31	35	39	34	28	34	16	10

POP-UP PART CIRCLE (90°) ROTARY SPRINKLER IRRIGATION FOR HIGH WATER-USE TURF														
SPRINKLER MANUFACTURER		RAIN BIRD		LOCATION:					LIVERMORE, CALIFORNIA					
PRECIPITATION RATE (INCHES/HOUR):		1.88		HEAD SPACING:					VARIES					
IRRIGATION SYSTEM EFFICIENCY		0.75		HEAD FLOW:					VARIES					
PLANT FACTOR:		0.80												
YEAR 2 REDUCTION AMOUNT:		-10% OF YEAR 1 (ESTABLISHMENT) RUN TIME MINUTES												
MONTH:		JAN	FEB	MAR	APR	MAY	JUN	JUL	AUG	SEP	OCT	NOV	DEC	TOTAL
ETO PER MONTH (INCHES):		1.20	1.50	2.90	4.40	5.90	6.60	7.40	6.40	5.30	3.20	1.50	0.90	47.20
ETO PER WEEK (INCHES):		0.277	0.346	0.670	1.016	1.363	1.524	1.709	1.478	1.224	0.739	0.346	0.208	
APPLIED ETO PER WEEK (INCHES):		0.296	0.370	0.714	1.084	1.453	1.626	1.823	1.577	1.306	0.788	0.370	0.222	
MINUTES OF WATER PER WEEK:		YEAR 1	9	12	23	35	46	52	58	50	42	25	12	7
DAYS PER WEEK:		YEAR 1	1	1	2	2	2	2	2	2	1	1	1	1
MINUTES OF WATER PER DAY:		YEAR 1	9	12	11	17	23	26	29	25	21	25	12	7
CYCLES PER DAY:		YEAR 1	1	1	1	1	1	1	1	1	1	1	1	1
MINUTES PER CYCLE:		YEAR 1	9	12	11	17	23	26	29	25	21	25	12	7
		YEAR 2	8	11	10	16	21	23	26	23	19	23	11	6

POP-UP PART CIRCLE (90-180°) ROTARY SPRINKLER IRRIGATION FOR LOW WATER-USE SHRUBS														
SPRINKLER MANUFACTURER		RAIN BIRD		LOCATION:					LIVERMORE, CALIFORNIA					
PRECIPITATION RATE (INCHES/HOUR):		0.94		HEAD SPACING:					VARIES					
IRRIGATION SYSTEM EFFICIENCY		0.75		HEAD FLOW:					VARIES					
PLANT FACTOR:		0.30												
YEAR 2 REDUCTION AMOUNT:		-10% OF YEAR 1 (ESTABLISHMENT) RUN TIME MINUTES												
MONTH:		JAN	FEB	MAR	APR	MAY	JUN	JUL	AUG	SEP	OCT	NOV	DEC	TOTAL
ETO PER MONTH (INCHES):		1.20	1.50	2.90	4.40	5.90	6.60	7.40	6.40	5.30	3.20	1.50	0.90	47.20
ETO PER WEEK (INCHES):		0.277	0.346	0.670	1.016	1.363	1.524	1.709	1.478	1.224	0.739	0.346	0.208	
APPLIED ETO PER WEEK (INCHES):		0.111	0.139	0.268	0.406	0.545	0.610	0.684	0.591	0.490	0.296	0.139	0.083	
MINUTES OF WATER PER WEEK:		YEAR 1	7	9	17	26	35	39	44	38	31	19	9	5
DAYS PER WEEK:		YEAR 1	1	1	2	2	2	2	2	2	1	1	1	1
MINUTES OF WATER PER DAY:		YEAR 1	7	9	9	13	17	19	22	19	16	19	9	5
CYCLES PER DAY:		YEAR 1	1	1	1	1	1	1	1	1	1	1	1	1
MINUTES PER CYCLE:		YEAR 1	7	9	9	13	17	19	22	19	16	19	9	5
		YEAR 2	6	8	8	12	16	18	20	17	14	17	8	5

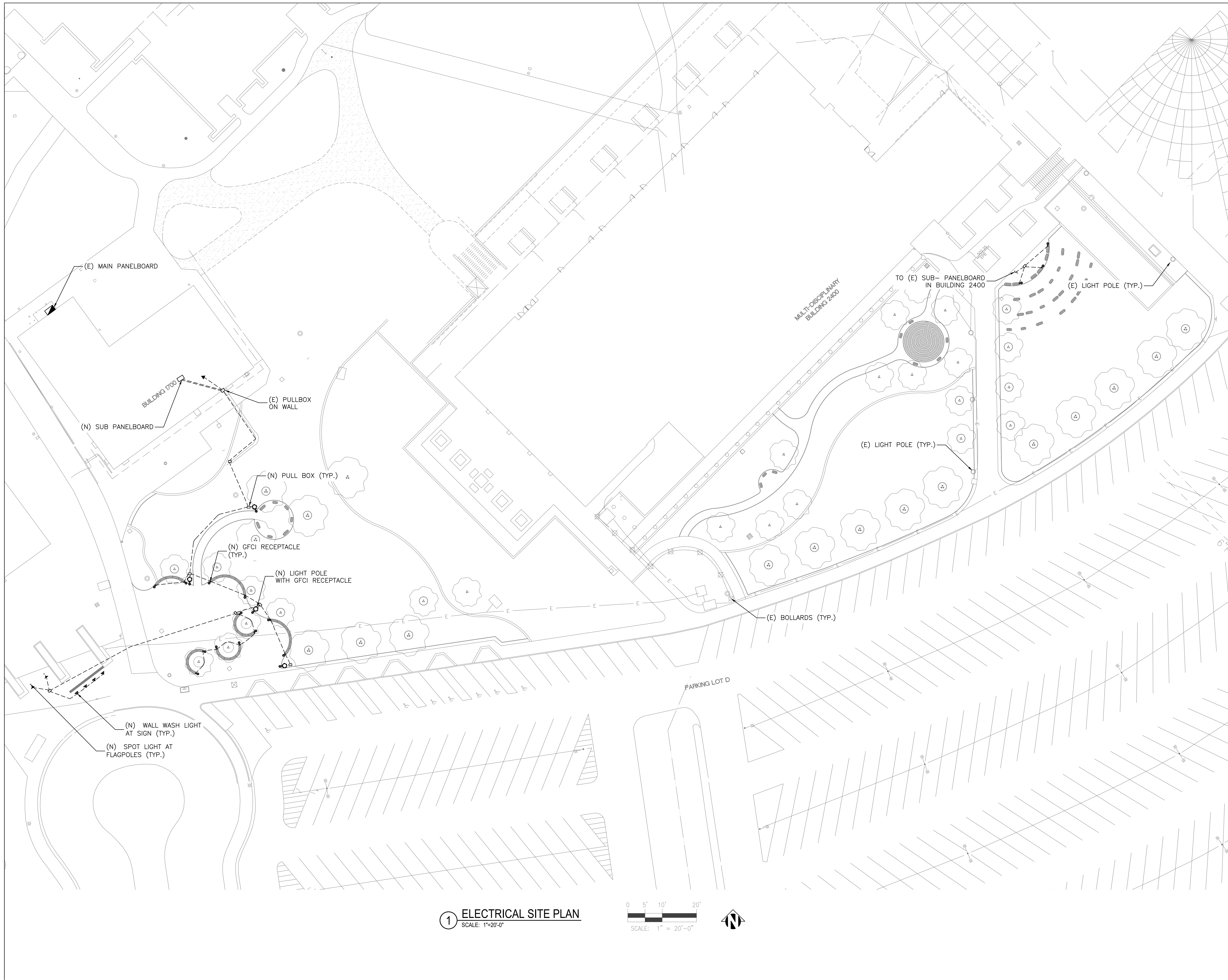
SUB-SURFACE DRIP IRRIGATION FOR LOW WATER-USE SHRUBS/GROUND COVER														
SPRINKLER MANUFACTURER		RAIN BIRD		LOCATION:					LIVERMORE, CALIFORNIA					
PRECIPITATION RATE (INCHES/HOUR):		1.51		EMITTER SPACING:					VARIES					
IRRIGATION SYSTEM EFFICIENCY		0.81		EMITTER FLOW:					0.9 GPH					
PLANT FACTOR:		0.30												
YEAR 2 REDUCTION AMOUNT:		-10% OF YEAR 1 (ESTABLISHMENT) RUN TIME MINUTES												
MONTH:		JAN	FEB	MAR	APR	MAY	JUN	JUL	AUG	SEP	OCT	NOV	DEC	TOTAL
ETO PER MONTH (INCHES):		1.20	1.50	2.90	4.40	5.90	6.60	7.40	6.40	5.30	3.20	1.50	0.90	47.20
ETO PER WEEK (INCHES):		0.277	0.346	0.670	1.016	1.363	1.524	1.709	1.478	1.224	0.739	0.346	0.208	
APPLIED ETO PER WEEK (INCHES):		0.103	0.128	0.248	0.376	0.505	0.565	0.633	0.547	0.453	0.274	0.128	0.077	
MINUTES OF WATER PER WEEK:		YEAR 1	4	5	10	15	20	22	25	22	18	11	5	3
DAYS PER WEEK:		YEAR 1	1	1	2	2	3	3	3	3	2	1	1	1
MINUTES OF WATER PER DAY:		YEAR 1	4	5	5	7	7	8	7	6	5	5	3	3
CYCLES PER DAY:		YEAR 1	1	1	1	1	1	1	1	1	1	1	1	1
MINUTES PER CYCLE:		YEAR 1	4	5	5	7	7	8	7	6	5	5	3	3
		YEAR 2	4	5	4	7	6	7	6	5	5	3	3	3

SHRUB BUBBLER IRRIGATION FOR LOW WATER-USE SHRUBS														
SPRINKLER MANUFACTURER		RAIN BIRD		LOCATION:					LIVERMORE, CALIFORNIA					
PRECIPITATION RATE (INCHES/HOUR):		4.85		HEAD SPACING:					VARIES					
IRRIGATION SYSTEM EFFICIENCY		0.81		HEAD FLOW:					0.25 GPM					
PLANT FACTOR:		0.30												
YEAR 2 REDUCTION AMOUNT:		-10% OF YEAR 1 (ESTABLISHMENT) RUN TIME MINUTES												
MONTH:		JAN	FEB	MAR	APR	MAY	JUN	JUL	AUG	SEP	OCT	NOV	DEC	TOTAL
ETO PER MONTH (INCHES):		1.20	1.50	2.90	4.40	5.90	6.60	7.40	6.40	5.30	3.20	1.50	0.90	47.20
ETO PER WEEK (INCHES):		0.277	0.346	0.670	1.016	1.363	1.524	1.709	1.478	1.224	0.739	0.346	0.208	
APPLIED ETO PER WEEK (INCHES):		0.103	0.128	0.248	0.376	0.505	0.565	0.633	0.547	0.453	0.274	0.128	0.077	
MINUTES OF WATER PER WEEK:		YEAR 1	1	2	3	5	6	7	8	7	6	3	2	1
DAYS PER WEEK:		YEAR 1	1	1	1	2	2	2	2	2	2	1	1	1
MINUTES OF WATER PER DAY:		YEAR 1	1	2	3	2	3	3	3	3	3	2	1	1
CYCLES PER DAY:		YEAR 1	1	1	1	1	1	1	1	1	1	1	1	1
MINUTES PER CYCLE:		YEAR 1												









AUTHORITY APPROVAL

**Keller Mitchell & Co.**  
 Landscape Architecture  
 1970 Broadway, Suite 800  
 Oakland, California, 94612  
 T (510) 451-9987  
 F (510) 452-9987  
 www.kellermitchell.com


**natron**  
 CONSULTING ENGINEERS  
 1480 MORAGA ROAD, SUITE C #229  
 MORAGA, CA 94556

KEY PLAN

**CLPCCD - LAS POSITAS  
 COLLEGE  
 LANDSCAPE  
 RENOVATION**  
 3000 CAMPUS HILL DRIVE,  
 LIVERMORE, CA 94551

  
*Jeffrey D. Ansel*

Date	Issue
1 01/19/2023	BID SET

DRAWING TITLE  
**ELECTRICAL  
 SITE PLAN**

SHEET NO.  
**E2.1**

PROJECT NO.  
 22202  
 SCALE \_\_\_\_\_ DRAWN BY  
 SH

**1 ELECTRICAL SITE PLAN**  
 SCALE: 1" = 20'-0"  
  
 SCALE: 1" = 20'-0"  



