

# ELECTRICAL SYSTEM

## A. Power Distribution:

1. Receptacles Hubble or equal
2. Switches Hubble or equal
3. Face Plates Satin (brushed) stainless steel
4. Conductors THHN, stranded copper only. Aluminum is not acceptable.
5. Electrical Panels Walls where electrical panels are to be located will have a nominal thickness of 2" larger than the panel.

## B. Lighting Fixtures and Lamps:

1. Light fixtures Energy saving T-8 lamps (4 foot) and electronic ballasts
2. Light Fixture Lamps **Holophone 8224** diffusers

## C. Lighting Controls:

1. Occupancy sensors Motion sensors will be utilized in areas such as classrooms, laboratories, offices, storage rooms, restrooms, and other applicable areas.

## E. Fire Alarm System:

1. Fire alarm The fire alarm detection and signaling system will be provided, zoned, coded, and electronically supervised, consisting of fire alarm control panel, remote annunciator, area smoke detectors, duct detectors, waterflow switches, manual pull stations, horns, and strobes. The fire alarm control panel will monitor and annunciate the status of detection and alarm conditions  
**FCI at Chabot College**  
**FCI at Las Positas**
2. Exit Signs LED 277v

## F. Signal:

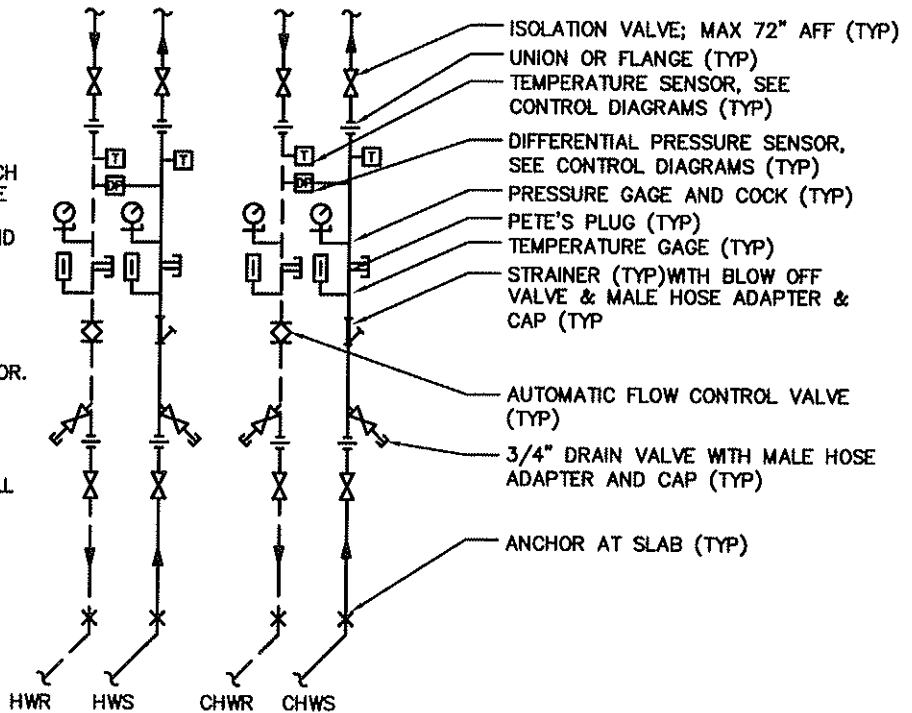
1. Clocks **Simplex 6310** (surface mounted only)
2. Telephone Jacks **RJ-45 Lucent Technologies**
3. Data See Guidelines published by IT
4. Communications See Guidelines published by IT

## G. Miscellaneous:

1. Time Clocks Connect to EMS

**NOTE:**

1. RISER TO BE LOCATED IN SUCH A MANNER TO PROVIDE ADEQUATE ROOM AND ACCESS TO READ ALL GAGES, OPERATE ALL VALVES, AND REMOVE SECTIONS BETWEEN UNIONS/FLANGES.
2. MAXIMUM HEIGHT TO RISER ISOLATION VALVE SHALL NOT EXCEED 72" ABOVE FINISHED FLOOR.
3. ALL VALVES 2-1/2" & BELOW SHALL BE BALL VALVES.
4. ALL VALVES 3" & ABOVE SHALL BE GATE VALVES.



## CHILLED AND HEATING WATER RISER DIAGRAM

NO SCALE

**CHABOT COLLEGE**

HAYWARD CA

CHABOT-LAS POSITAS COMMUNITY  
COLLEGE DISTRICT

PROJECT 2007-0347  
CONTACT Ben Cao

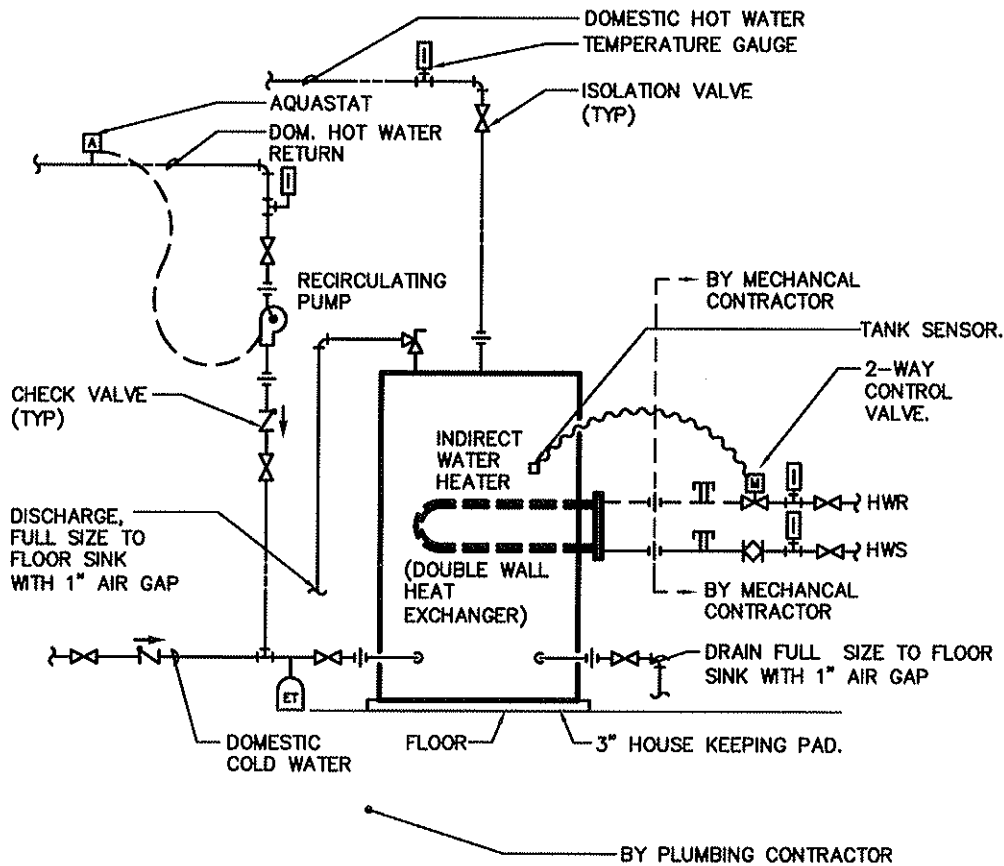


717 Market Street  
Suite 500  
San Francisco, CA 94103  
TEL 415.489.7240  
FAX 415.489.7289  
www.interfaceengineering.com

DATE: 04-03-2009

THIS REVISES IN  
PART DRAWING:

**DRAWING: MSK-1**



## INDIRECT WATER HEATER PIPING DIAGRAM

NO SCALE

CHABOT COLLEGE

HAYWARD CA

CHABOT-LAS POSITAS COMMUNITY  
COLLEGE DISTRICT

PROJECT 2007-0347  
CONTACT Ben Cao

 **INTERFACE**  
ENGINEERING

717 Market Street  
Suite 500  
San Francisco, CA 94103  
TEL 415.489.7240  
FAX 415.489.7289  
www.interfaceengineering.com

DATE: 04-03-2009

THIS REVISES IN  
PART DRAWING:

**DRAWING: MSK-2**