

# PROJECT PROGRESS REPORT

## New Academic Support and Office Building 2100

LAS POSITAS COLLEGE  
January 22, 2020

**Project Team:**  
**Architect:** LPAS  
**Project / Construction Manager:** Critical Solutions, Inc.  
**Contractor:** TBD

**Project Description:**  
The new Academic Support and Office building will be built in the location of existing buildings 2100 & 2200. The project will consist of the following elements and programs: English Center incorporating classrooms, computer lab, tutoring and study areas. Math Center incorporating classrooms, labs and the Math X program. Computer Sciences Center including computer labs, networking, maker space and open labs with the expanded of library functions including reference desk, study areas, computer lab, expanded staff offices and library operational support spaces. Faculty Offices Dean's Suite and Student gathering, and support spaces will also be in the building.

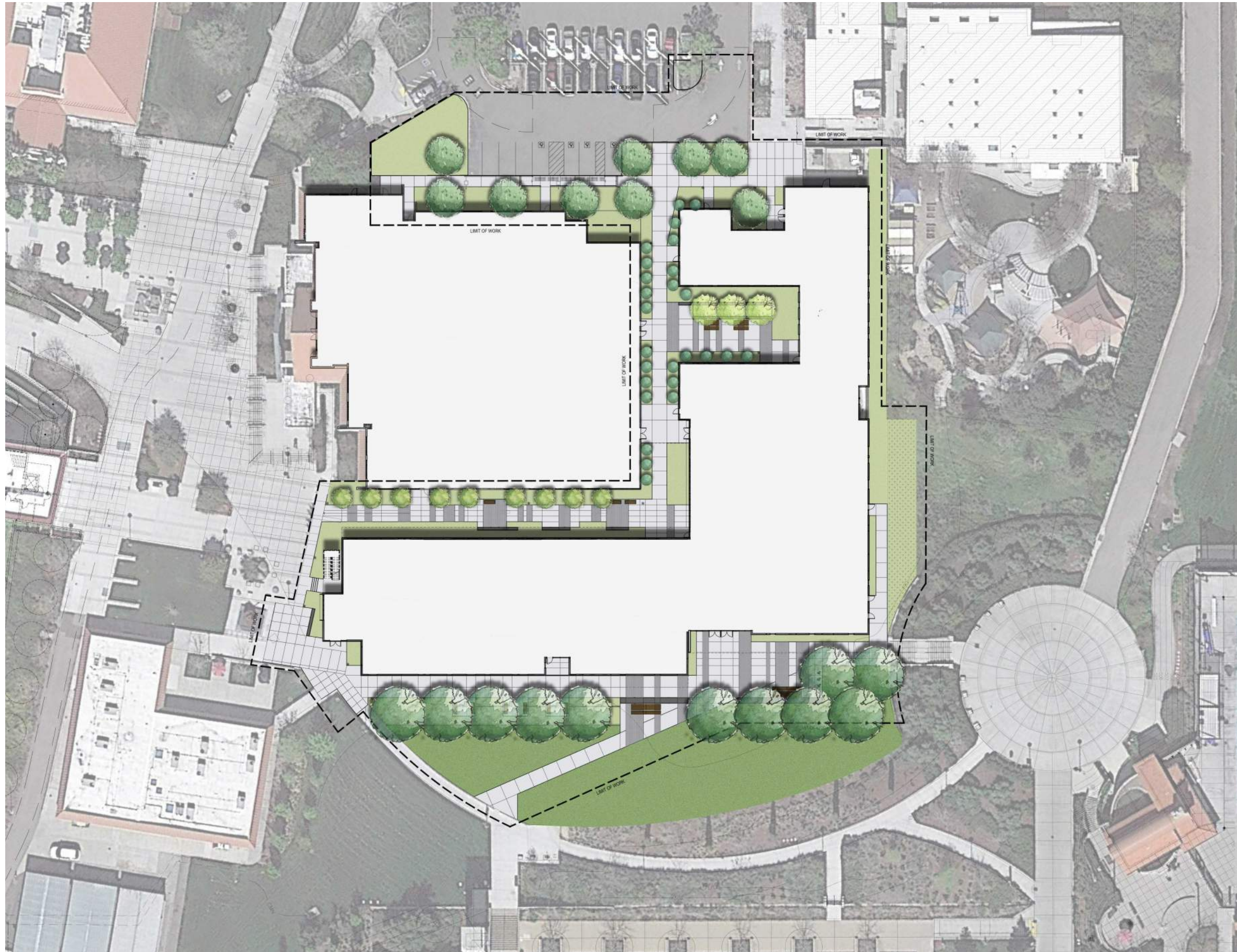
**Project Update:**  
Design Development deliverables were provided in December 2019. Proposed finishes were presented to the College. Updates will be presented to the Committee for approval. The new construction estimate has been submitted. All deliverables are being evaluated for accuracy and completeness in preparation for the construction document design phase to commence.

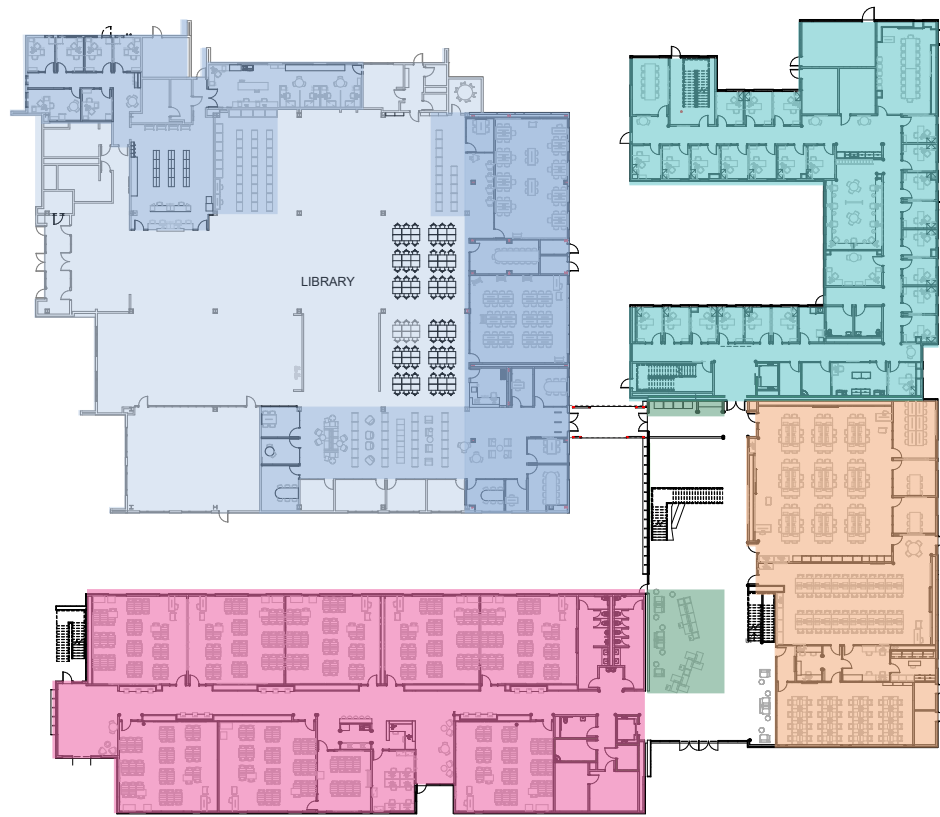
**Programming: Complete**  
**Schematic Design: Complete**  
**Design Development: Complete**  
**Construction Documents: 6/2020**  
**DSA Permit Approval: TBD**  
**Construction Start: TBD**  
**Occupancy: TBD**

**Square Footage:**  
**Faculty: +/- 25,278sf**  
**Classrooms/Math/Tutoring/Computer Studies: +/- 54,872sf**  
**Library Addition: +/- 5,000sf**

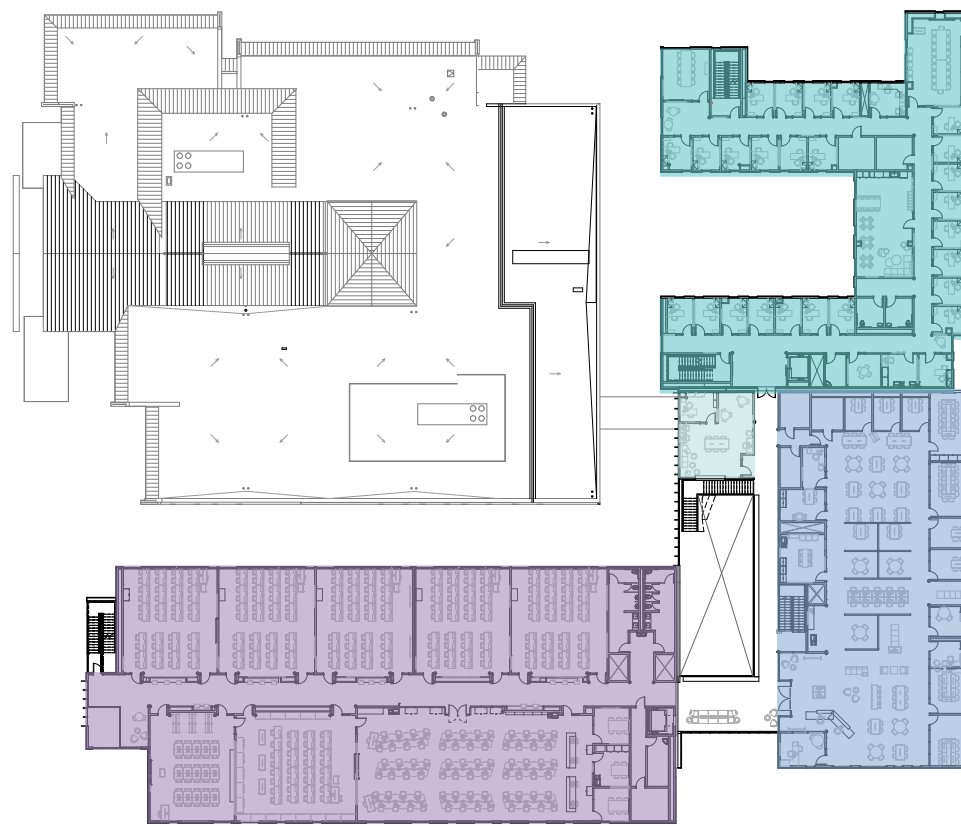




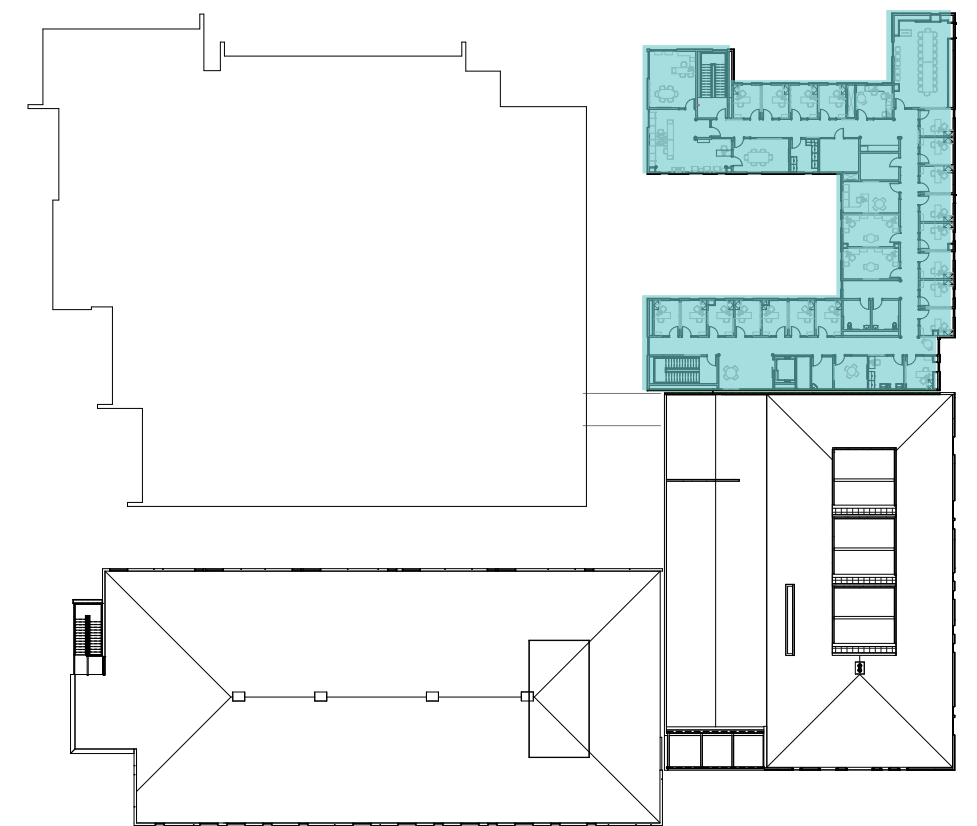




First Floor Plan



Second Floor Plan



Third Floor Plan

- |  |  |
|--|--|
| <span style="color: #e91e63;">■</span> Classrooms        | <span style="color: #673ab7;">■</span> Computer Studies    |
| <span style="color: #ff9800;">■</span> Math / Proctoring | <span style="color: #2196f3;">■</span> Tutoring            |
| <span style="color: #00bcd4;">■</span> Faculty           | <span style="color: #2e7d32;">■</span> Collaboration Space |
| <span style="color: #81c784;">■</span> Honors            |  |











