



C H A B O T - L A S P O S I T A S

| *Community College District*

COVID-19 Safe Work Practices

Special Meeting - Fall 2021



Safe Work Practices at CLPCCD

- March 2020 thru December 2020
 - 28 COVID-19 cases managed within District
- January 2021 thru August 10, 2021
 - 49 COVID-19 cases managed within District
 - Chabot College 30 cases
 - Las Positas College 14 cases
 - District/EDCE/M&O 5 cases



Safe Work Practices at CLPCCD

- January 2021 thru August 10, 2021
 - 49 COVID-19 cases managed within District
 - Student Cases
 - » 13 among Essential Workforce Classes
 - » 18 among Student Athletes
 - Staff Cases
 - » 5 among Instructional Staff (Instructor/Counselor/Librarian)
 - » 13 among Office/M&O/Bond Management



Safe Work Practices at CLPCCD

- January 2021 thru August 10, 2021
 - 49 COVID-19 cases managed within District
 - Identified/assigned cause of infection
 - » 2 known or suspected at CLPCCD
 - » 38 from household contact
 - » 9 other work site or outside exposure
 - Identified Close Contacts from on-campus activities
 - » 145 total close contacts identified
 - Duplicated headcount



Safe Work Practices at CLPCCD

- Team approach to manage COVID-19
 - Reopening Task Force Members
 - Wyman Fong, Theresa Fleisher-Rowland, Bruce Griffin, Debbie Trigg, Paulette Lino, Jennifer Aries, Jamal Cooks, Stacy L Thompson, Sara Woods, Amy Mattern, Jeanne Wilson, Nan Ho, Tamica Ward, Elizabeth David, Alex Clark, David Betts, Mujeeb Dadgar, Kristina Whalen, Matthew Kritscher, Owen Letcher
 - District M&O Staff
 - Senior Leadership Team
 - Forensic Analytical Consultants Inc (FACS) – Certified Industrial Hygiene consulting firm from Hayward, CA. includes medical professional Dr. Jill Merek.
 - Legal Counsel – Liebert Cassidy & Whitmore – Meredith Karasch



Safe Work Practices at CLPCCD

- Before the Blueprint for a Safer Economy (May 2020 to August 2020)
 - Four Tiered system with defined recommendations for Schools for when instruction could be provided in-person.
 - Purple – Essential Workforce employees & courses only
 - Red – Hard to Convert courses added, approved employees
 - Orange – 25% room capacity with safety protocols
 - Yellow – 50% room capacity, community use allowed



Safe Work Practices at CLPCCD

- Blueprint for a Safer Economy (Sept 2020- June 2021)
 - Statewide Four Tiered system with defined recommendations for Schools for when instruction could be provided in-person.
 - Widespread – closed to in-person with certain exceptions
 - Substantial – 25% capacity in classrooms
 - Moderate – 50% capacity not to exceed 100
 - Minimal – 50% capacity not to exceed 200
 - Vaccination status in state allowed additional opening and modified the tiers at 2 million doses and 4 million doses.



Safe Work Practices at CLPCCD

- June 4, 2021 – CDC issues outdated guidance to Institutions of Higher Education
- June 15, 2021 – Governor Newsom reopens California – Beyond the Blueprint
- June 17, 2021 – Cal OSHA Safety Standards Board modifies the Emergency Temporary Standards
 - Includes vaccine verification by employers



Safe Work Practices at CLPCCD –CDC Update

- Offer and Promote COVID-19 Vaccination
 - Available at both campus health clinics
- Guidance to IHE Where not Everyone is Fully Vaccinated
 - Wear a Mask – Indoors and in crowded Outdoor settings
 - Physical Distancing – Limit capacity of indoor spaces
 - Hand Hygiene and Respiratory Etiquette
 - Case Investigation and Contact Tracing
 - Testing for individuals who are symptomatic
 - At home symptom screening



Safe Work Practices at CLPCCD – Cal OSHA

- Fully Vaccinated and Unvaccinated Employees
- Physical Distancing is not required
- Employer provided N-95 Respirator to unvaccinated upon request
- Training and instructional program
- Outbreak – 3 or more from one workgroup
- Major Outbreak – 20 or more from one workgroup
- Testing for not fully vaccinated



Safe Work Practices for Summer & Fall 2021

- Physical Distancing –reduced capacity of classrooms, conference rooms and congregate spaces
- Face Coverings in indoor locations for students and the public
- Face Coverings not required outdoors when 6 feet apart
- Personal Hygiene
- Medical Screening at home



Safe Work Practices at CLPCCD



Physical Distancing:

COVID-19 SAFETY PLAN

COVID-19 Safe Practices (Public Area, Special)
Chabot College
Classroom Posting

Classroom 1802

MAXIMUM OCCUPANCY

31
(Fall 2021)

USE INSTRUCTIONS

Follow the general COVID-19 safety practices for all employees and all visitors in addition to specific practices developed for the subject area. This includes, but is not limited to:

- Medical Screening.** Do not use this area and remain at home if you are experiencing symptoms related to COVID-19, test positive or have been exposed to a known or suspected case.
- Physical Distancing.** Maintain a distance of at least four feet between yourself and others at all times. The greater the distance the better. Do not rearrange tables/chairs, they have been placed to allow at least six feet between students.
- Personal Hygiene.** Wash hands/use hand sanitizer before and after using the area. Avoid sharing personal items on surfaces unless necessary. Cover cough/sneezes.
- Protective Equipment.** Wear a face covering/mask which covers the nose and mouth whenever others are present or anticipated to be present in the area.
- Environmental Cleaning.** Clean and disinfect surfaces you will be frequently touching before and after using the area.

Note: These practices are current as of the revision date. Since the COVID-19 pandemic is evolving rapidly, extra diligence should be used in watching for updates to these practices.

Rev 04/2021 Format © Forensic Analytical Consulting Services Page 1 of 1





Safe Work Practices at CLPCCD



Face Covering and Personal Protective Equipment:

Putting On The Respirator

			
Position the respirator in your hands with the nose piece at your fingertips.	Cup the respirator in your hand allowing the headbands to hang below your hand. Hold the respirator under your chin with the nosepiece up.	The top strap (on single or double strap respirators) goes over and rests at the top back of your head. The bottom strap is positioned around the neck and below the ears. Do not crisscross straps.	Place your fingertips from both hands at the top of the metal nose clip (if present). Slide fingertips down both sides of the metal strip to mold the nose area to the shape of your nose.

Checking Your Seal²

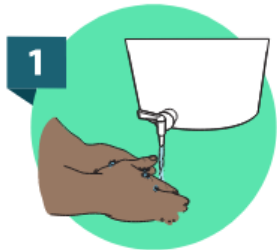
			
Place both hands over the respirator, take a quick breath in to check whether the respirator seals tightly to the face.	Place both hands completely over the respirator and exhale. If you feel leakage, there is not a proper seal.	If air leaks around the nose, readjust the nosepiece as described. If air leaks at the mask edges, re-adjust the straps along the sides of your head until a proper seal is achieved.	If you cannot achieve a proper seal due to air leakage, ask for help or try a different size or model.



Safe Work Practices at CLPCCD



Personal Hygiene:



1 Wet hands with water.



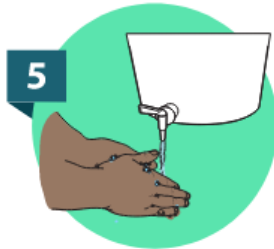
2 Apply enough soap to cover all hand surfaces.



3 Rub hands together and scrub everywhere.



4 Wash the front and back of your hands, in between your fingers, and under your nails.



5 Rinse hands with water.



6 Dry hands completely using a single-use towel or air dry.

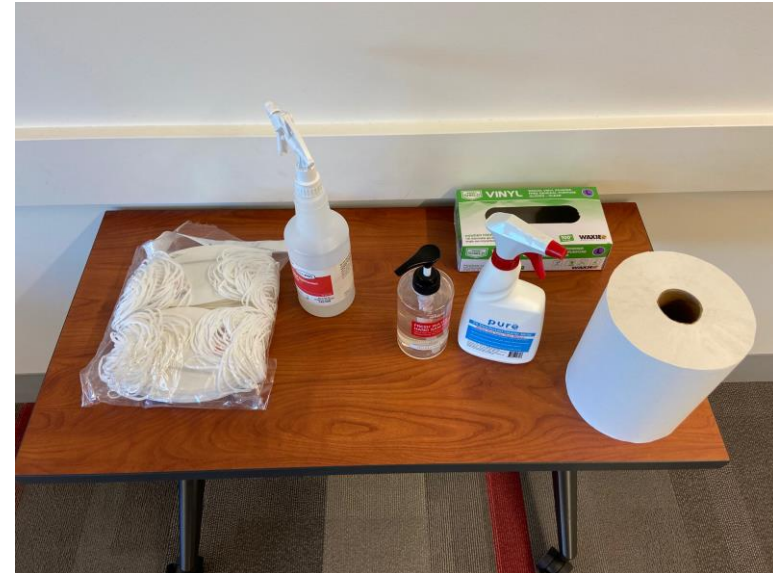


Safe Work Practices at CLPCCD



Environmental Cleaning:

- Daily cleaning of all facilities
- Response cleaning to known cases or outbreaks
- Custodial staff will perform duties as necessary
- Classroom & Office self-cleaning supplies available



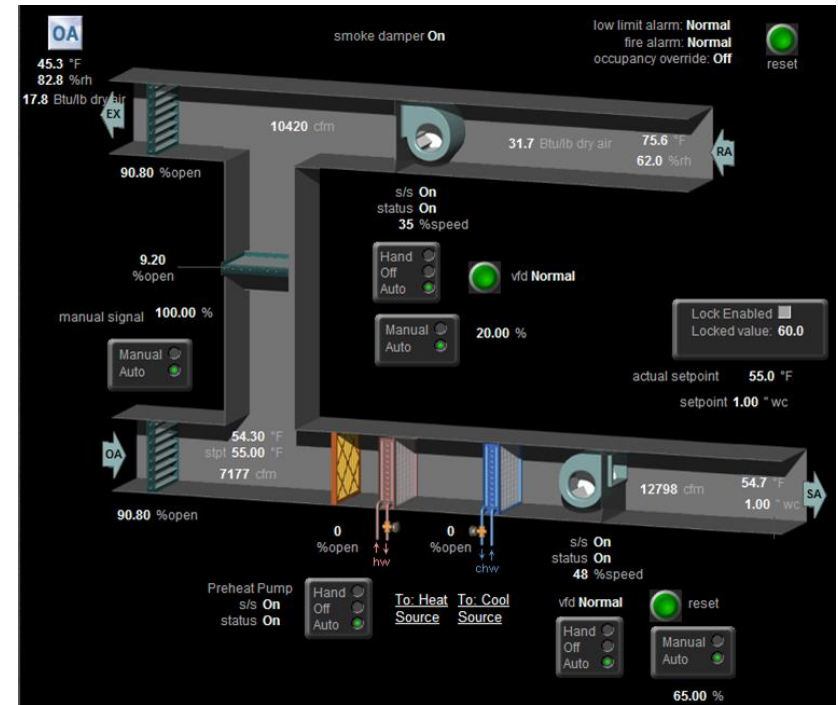


Safe Work Practices at CLPCCD



Enhanced Ventilation and Filtration:

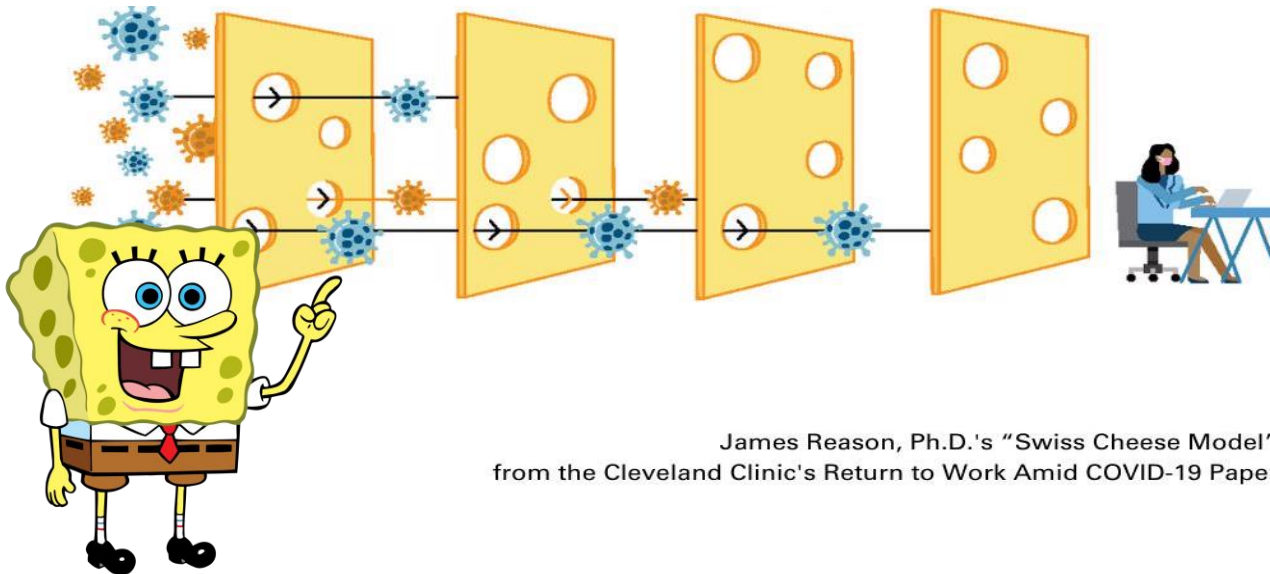
- Filter verification at least MERV 8
- Optimized outside air
- Open doors and windows
 - Below 90 degrees
 - AWI below 100
- California Community College Facilities are designed with 6 to 8 air changes per hours (Cal OSHA recommendation is 3)





Safe Work Practices at CLPCCD

- Training Program, Injury and Illness Prevention Plan Documents and Frequently Asked Questions:





Safe Work Practices at CLPCCD

- Training Offerings (In-Person/ Zoom Conference/ Webinar)
March 1 thru August 18th, 2021
 - Chancellor’s Forum Held
 - Three different times
 - 532 participants
 - Webinar/ Zoom Conferences with FACS & Dr. Merek
 - 17 different times
 - 238+ participants
 - In- Person workplace walk through (FACS/ Dr. Merek/ VC Letcher)
 - 36 different times
 - 290+ participants
 - On-line Video Training / Q&A Documents / Safety Plan / Information Links



Safe Work Practices at CLPCCD

- Your safety and the safety of our students is our Number 1 concern!
- Safe Work Practices are effective if followed.
- Vaccines work, even against the latest variants
- What if we experience an outbreak
 - Universal face coverings
 - 6 foot social distancing
- Information from a reliable source
- Know you are in control and can ask or raise concerns



Safe Work Practices at CLPCCD

- For the fall term, vaccine mandate implemented for students enrolled and participating in programs and courses identified as being at higher risk for contraction and spread of COVID-19. Factors used to identify such programs and courses include:
 - Proximity of physical interaction between students, faculty, classified professionals, and administrators;
 - And based upon existing and known district case data.



Safe Work Practices at CLPCCD

- Effective August 16th all employees are required to complete the CLPCCD Verification of Vaccination form.



Chabot-Las Positas Community College District

7600 Dublin Blvd. 3rd Floor, Dublin CA 94568

Date: July 26, 2021

The Chabot Las Positas Community College District is currently requiring all employees to wear masks while working indoors or while working in outdoors in large group settings ([for more information, see the District's Plan for a Safe Return to Campus – Fall 2021 webpage](#)). The District may, in the future, allow fully vaccinated employees to not wear a mask in the workplace, depending on guidance from the local public health authority and transmission rates of the COVID-19 virus. In accordance with the State of California Department of Industrial Relations Occupational Health and Safety Board COVID-19 Emergency Temporary Standards, 8 CCR Sections 3205-3205, effective June 17, 2021 ("ETS"), the California Department of Public Health Vaccine Record Guidelines and Standards published June 14, 2021, and the California Department of Fair Employment and Housing Information on COVID-19 published March 4, 2021. In order to ensure the health and safety of all employees and students the District requires individuals to provide an attestation of vaccination. Please note all related employee records will be kept in a confidential manner according to the District's policies and the District will only disclose such information to the extent necessary and only to managers with a legitimate need for such information. The District prohibits discourteous and unprofessional conduct based on vaccination status or the use of face coverings. CLPCCD has chosen to have all individuals self-certify their vaccination status and to keep a record of the self-certification but to not keep a physical record of the vaccination card issued to the employee at the time of vaccination. If an employee's vaccination status changes after submission of this form, the employee shall immediately submit an updated form and contact Human Resources for an additional record review and change in status regarding face covering requirements.

Employee Name: _____ Supervisor Name: _____





Safe Work Practices at CLPCCD

- As of August 19th, out of 644 employees who have submitted the form, 624 have certified that they are fully vaccinated, 11 unvaccinated, and 9 declined to state.



Safe Work Practices at CLPCCD

- Legally required exemption requests are available to both students and employees based upon:
 - Medical conditions
 - Sincerely held religious belief



Safe Work Practices at CLPCCD

- Vaccine mandates:
 - UC System - mandate
 - CSU System - mandate
 - K-12 – mandate or submit to weekly testing
 - Community college – as of 8/17, 26 districts with student/staff mandates, 1 district with student only mandate, and 2 districts with employee only mandate. Most are mandates with no option for weekly testing.



Safe Work Practices at CLPCCD

- Recommended Board Policies Requiring Vaccination (with legally required exemption requests):
 - Revised Board Policy 5210
 - Revised Board Policy 7330



Safe Work Practices at CLPCCD

Thank you!